



SZABO SCANDIC

Part of Europa Biosite

Produktinformation



Forschungsprodukte & Biochemikalien



Zellkultur & Verbrauchsmaterial



Diagnostik & molekulare Diagnostik



Laborgeräte & Service

Weitere Information auf den folgenden Seiten!
See the following pages for more information!



Lieferung & Zahlungsart

siehe unsere [Liefer- und Versandbedingungen](#)

Zuschläge

- Mindermengenzuschlag
- Trockeneiszuschlag
- Gefahrgutzuschlag
- Expressversand

SZABO-SCANDIC HandelsgmbH

Quellenstraße 110, A-1100 Wien

T. +43(0)1 489 3961-0

F. +43(0)1 489 3961-7

mail@szabo-scandic.com

www.szabo-scandic.com

[linkedin.com/company/szaboscandic](https://www.linkedin.com/company/szaboscandic) 

B2M (Human) Matched Antibody Pair

Catalog # : H00000567-AP41

規格 : [1 Set]

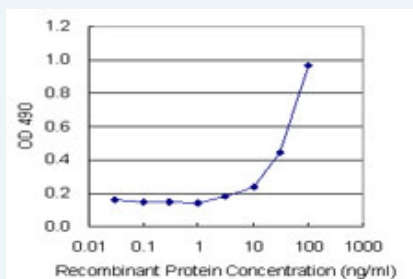
List All

Specification

Product Description: This antibody pair set comes with matched antibody pair to detect and quantify protein level of human B2M.

Reactivity: Human

Quality Control Testing: Standard curve using recombinant protein (H00000567-P01) as an analyte.



Sandwich ELISA detection sensitivity ranging from 3 ng/ml to 100 ng/ml.

Supplied Product: Antibody pair set content:
 1. Capture antibody: mouse monoclonal anti-B2M (100 ug)
 2. Detection antibody: biotinylated mouse monoclonal anti-B2M, IgG2b Kappa (50 ug)
 *Reagents are sufficient for at least 3-5 x 96 well plates using recommended protocols.

Storage Instruction: Store reagents of the antibody pair set at -20°C or lower. Please aliquot to avoid repeated freeze thaw cycle. Reagents should be returned to -20°C storage immediately after use.

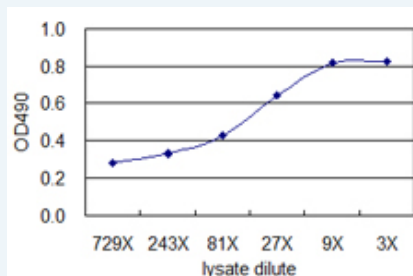
MSDS: [Download](#)

Applications

ELISA Pair (Recombinant protein)

[Protocol Download](#)

ELISA Pair (Transfected lysate)



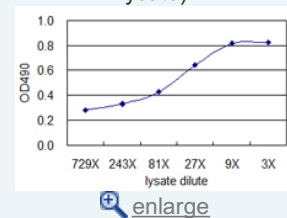
Standard curve using 293T overexpression lysate (non-denatured) as an analyte. Sandwich ELISA detection sensitivity ranging from approximately 81x to 3x dilution of the 293T overexpression lysate (non-denatured).

[Protocol Download](#)

Application Image

ELISA Pair (Recombinant protein)

ELISA Pair (Transfected lysate)



[enlarge](#)

Entrez GeneID: [567](#)

Gene Name: B2M

Gene Alias: -

Gene Description: beta-2-microglobulin

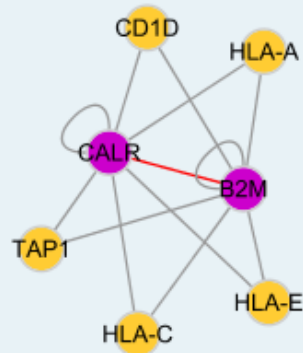
Omim ID: [109700](#), [241600](#)

Gene Ontology: [Hyperlink](#)

Gene Summary: This gene encodes a serum protein found in association with the major histocompatibility complex (MHC) class I heavy chain on the surface of nearly all nucleated cells. The protein has a predominantly beta-pleated sheet structure that can form amyloid fibrils in some pathological conditions. A mutation in this gene has been shown to result in hypercatabolic hypoproteinemia

Other Designations: beta chain of MHC class I molecules, beta-2-microglobin

Interactome



Gene Pathway

[Antigen processing and presentation](#)

Related Disease

[Arthritis, Rheumatoid](#) [Cardiovascular Diseases](#) [Diabetes Mellitus, Type 2](#) [Disease Edema](#) [Gastritis](#) [Genetic Predisposition to Disease](#) [Kidney Failure, Chronic](#) [Osteoarthritis](#) [Parkinson Disease](#) [Parkinson disease](#) [Stomach Neoplasms](#)