



SZABO SCANDIC

Part of Europa Biosite

Produktinformation



Forschungsprodukte & Biochemikalien



Zellkultur & Verbrauchsmaterial



Diagnostik & molekulare Diagnostik



Laborgeräte & Service

Weitere Information auf den folgenden Seiten!
See the following pages for more information!



Lieferung & Zahlungsart

siehe unsere [Liefer- und Versandbedingungen](#)

Zuschläge

- Mindermengenzuschlag
- Trockeneiszuschlag
- Gefahrgutzuschlag
- Expressversand

SZABO-SCANDIC HandelsgmbH

Quellenstraße 110, A-1100 Wien

T. +43(0)1 489 3961-0

F. +43(0)1 489 3961-7

mail@szabo-scandic.com

www.szabo-scandic.com

[linkedin.com/company/szaboscandic](https://www.linkedin.com/company/szaboscandic) 

B2M purified MaxPab rabbit polyclonal antibody (D01P) MaxPab®

Catalog # : H00000567-D01P

規格 : [100 ug]

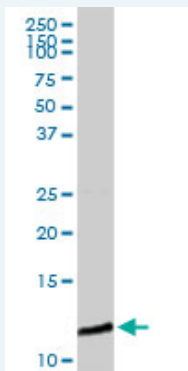
[List All](#)

Specification

Product Description:	Rabbit polyclonal antibody raised against a full-length human B2M protein.
Immunogen:	B2M (NP_004039.1, 1 a.a. ~ 119 a.a) full-length human protein.
Sequence:	MSRSVALAVLALLSLSGLEAIQRTPKIQVYSRHPAENGKSNFLNCYVSGF HPSDIEVDLLKNGERIEKVEHSDLSFSKDWSFYLLYYTEFTPTEKDEYAC RVNHMTLSQPKIVKWDRDM
Host:	Rabbit
Reactivity:	Human
Quality Control Testing:	Antibody reactive against mammalian transfected lysate.
Storage Buffer:	In 1x PBS, pH 7.4
Storage Instruction:	Store at -20°C or lower. Aliquot to avoid repeated freezing and thawing.
MSDS:	Download
Datasheet:	Download

Applications

Western Blot (Tissue lysate)



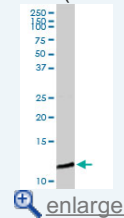
B2M MaxPab rabbit polyclonal antibody. Western Blot analysis of B2M expression in human placenta.

[Protocol Download](#)

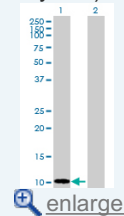
Western Blot (Transfected lysate)

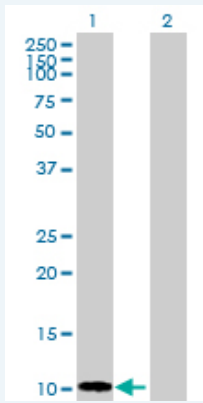
Application Image

Western Blot (Tissue lysate)




Western Blot (Transfected lysate)





Western Blot analysis of B2M expression in transfected 293T cell line ([H00000567-T01](#)) by B2M MaxPab polyclonal antibody.

Lane 1: B2M transfected lysate(13.70 KDa).
Lane 2: Non-transfected lysate.

 [Protocol Download](#)

Gene Information

Entrez GeneID: [567](#)

GeneBank Accession#: [NM_004048](#)

Protein Accession#: [NP_004039.1](#)

Gene Name: B2M

Gene Alias: -

Gene Description: beta-2-microglobulin

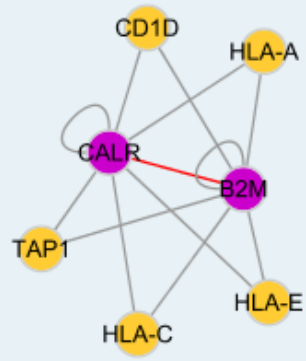
Omim ID: [109700](#), [241600](#)

Gene Ontology: [Hyperlink](#)

Gene Summary: This gene encodes a serum protein found in association with the major histocompatibility complex (MHC) class I heavy chain on the surface of nearly all nucleated cells. The protein has a predominantly beta-pleated sheet structure that can form amyloid fibrils in some pathological conditions. A mutation in this gene has been shown to result in hypercatabolic hypoproteinemia

Other Designations: beta chain of MHC class I molecules,beta-2-microglobin

Interactome



Gene Pathway

Antigen processing and presentation

Related Disease

Arthritis, Rheumatoid Cardiovascular Diseases Diabetes Mellitus, Type 2 Disease Edema
Gastritis Genetic Predisposition to Disease Kidney Failure, Chronic Osteoarthritis
Parkinson Disease Parkinson disease Stomach Neoplasms

[服務條款](#) | [隱私權政策](#) | [著作及商標](#) | [網站地圖](#)

©2016 亞諾法生技股份有限公司 Abnova Corporation. 版權所有.