



# SZABO SCANDIC

Part of Europa Biosite

## Produktinformation



Forschungsprodukte & Biochemikalien



Zellkultur & Verbrauchsmaterial



Diagnostik & molekulare Diagnostik



Laborgeräte & Service

Weitere Information auf den folgenden Seiten!  
See the following pages for more information!



### Lieferung & Zahlungsart

siehe unsere [Liefer- und Versandbedingungen](#)

### Zuschläge

- Mindermengenzuschlag
- Trockeneiszuschlag
- Gefahrgutzuschlag
- Expressversand

### SZABO-SCANDIC HandelsgmbH

Quellenstraße 110, A-1100 Wien

T. +43(0)1 489 3961-0

F. +43(0)1 489 3961-7

[mail@szabo-scandic.com](mailto:mail@szabo-scandic.com)

[www.szabo-scandic.com](http://www.szabo-scandic.com)

[linkedin.com/company/szaboscandic](https://www.linkedin.com/company/szaboscandic) 

## B2M monoclonal antibody (M01), clone 3F9-2C2

產品編號 # : H00000567-M01

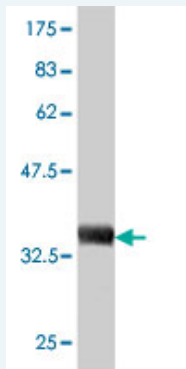
規格 : [ 100 ug ]

List All

### Specification

<b>Product Description:</b>	Mouse monoclonal antibody raised against a full length recombinant B2M.
<b>Immunogen:</b>	B2M (AAH32589, 1 a.a. ~ 119 a.a) full-length recombinant protein with GST tag. MW of the GST tag alone is 26 KDa.
<b>Sequence:</b>	MSRSVALAVLALLSLSGLEAIQRTPKIQVYSRHPAENGKSNFLNCYVSGF HPSDIEVDLLKNGERIEKVEHSDLSFSKDWSFYLLYYTEFTPTEKDEYAC RVNHMTLSQPKMKWDRDM
<b>Host:</b>	Mouse
<b>Reactivity:</b>	Human
<b>Isotype:</b>	IgG2b kappa

**Quality Control Testing:** Antibody Reactive Against Recombinant Protein.



Western Blot detection against Immunogen (38.83 KDa) .

**Storage Buffer:** In 1x PBS, pH 7.4

**Storage Instruction:** Store at -20°C or lower. Aliquot to avoid repeated freezing and thawing.

**MSDS:** [Download](#)

**Datasheet:** [Download](#)

### Publication Reference

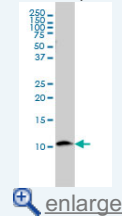
1. [MHC-I expression renders catecholaminergic neurons susceptible to T-cell-mediated degeneration.](#)  
Cebrian C, Zucca FA, Mauri P, Steinbeck JA, Studer L, Scherzer CR, Kanter E, Budhu S, Mandelbaum J, Vonsattel JP, Zecca L, Loike JD, Sulzer DNat Commun. 2014 Apr 16;5:3633. doi: 10.1038/ncomms4633.

### Applications

Western Blot (Cell lysate)

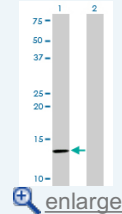
### Application Image

Western Blot (Cell lysate)



[enlarge](#)

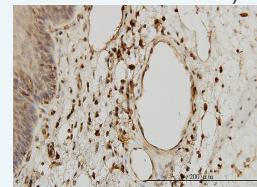
Western Blot (Transfected lysate)



[enlarge](#)

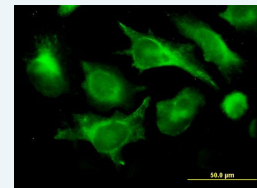
Western Blot (Recombinant protein)

Immunohistochemistry (Formalin/PFA-fixed paraffin-embedded sections)



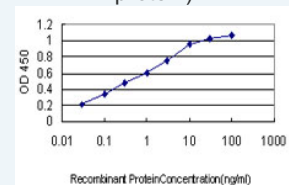
[enlarge](#)

Immunofluorescence



[enlarge](#)

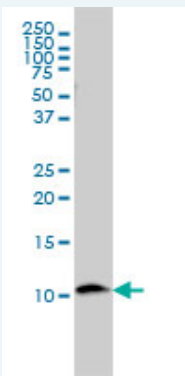
Sandwich ELISA (Recombinant protein)



[enlarge](#)

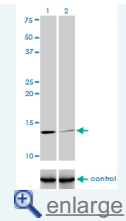
ELISA

RNAi Knockdown (Antibody validated)

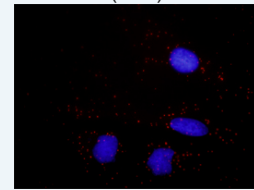


B2M monoclonal antibody (M01), clone 3F9-2C2 Western Blot analysis of B2M expression in U-2 OS ( Cat # L022V1 ).

[Protocol Download](#)

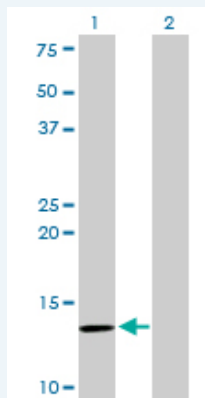


*In situ* Proximity Ligation Assay (Cell)



[enlarge](#)

### Western Blot (Transfected lysate)



Western Blot analysis of B2M expression in transfected 293T cell line by B2M monoclonal antibody (M01), clone 3F9-2C2.

Lane 1: B2M transfected lysate(13.7 KDa).

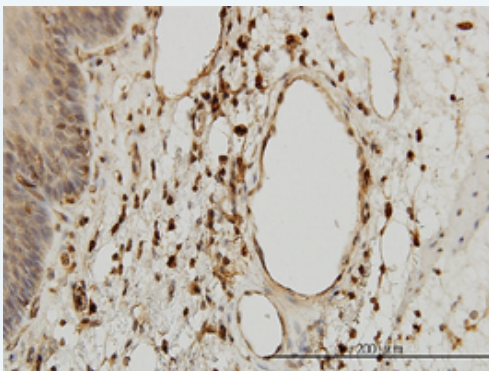
Lane 2: Non-transfected lysate.

[Protocol Download](#)

### Western Blot (Recombinant protein)

[Protocol Download](#)

### Immunohistochemistry (Formalin/PFA-fixed paraffin-embedded sections)

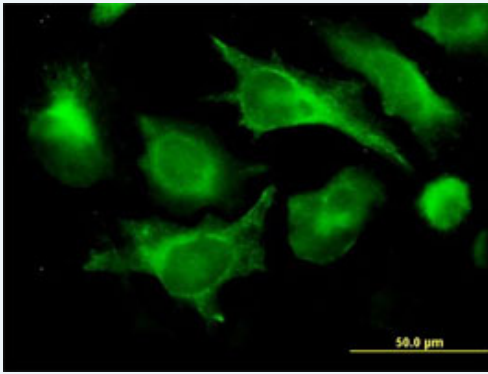


[enlarge this image](#)

Immunoperoxidase of monoclonal antibody to B2M on formalin-fixed paraffin-embedded human esophagus. [antibody concentration 3 ug/ml]

[Protocol Download](#)

### Immunofluorescence

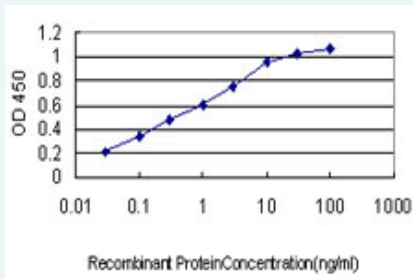


[enlarge this image](#)

Immunofluorescence of monoclonal antibody to B2M on HeLa cell. [antibody concentration 10 ug/ml]

[Protocol Download](#)

### Sandwich ELISA (Recombinant protein)

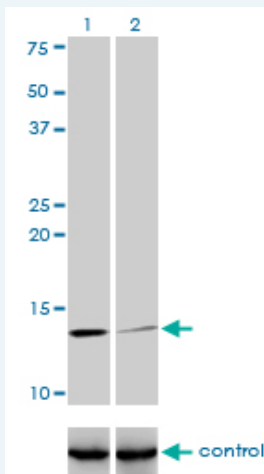


Detection limit for recombinant GST tagged B2M is approximately 0.03ng/ml as a capture antibody.

[Protocol Download](#)

### ELISA

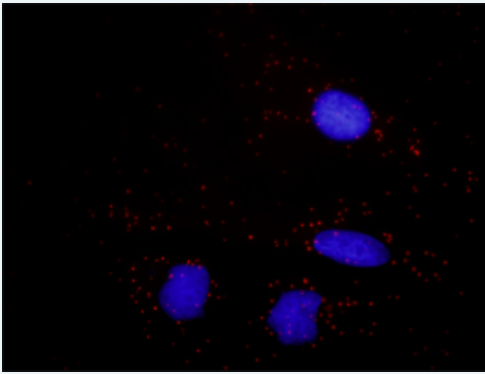
#### RNAi Knockdown (Antibody validated)



Western blot analysis of B2M over-expressed 293 cell line, cotransfected with B2M Validated Chimera RNAi ( Cat # H00000567-R01V ) (Lane 2) or non-transfected control (Lane 1). Blot probed with B2M monoclonal antibody (M01), clone 3F9-2C2 (Cat # H00000567-M01 ). GAPDH ( 36.1 kDa ) used as specificity and loading control.

[Protocol Download](#)

#### *In situ* Proximity Ligation Assay (Cell)



Proximity Ligation Analysis of protein-protein interactions between CALR and B2M. HeLa cells were stained with anti-CALR rabbit purified polyclonal 1:1200 and anti-B2M mouse monoclonal antibody 1:50. Each red dot represents the detection of protein-protein interaction complex, and nuclei were counterstained with DAPI (blue).

---

### Gene Information

---

**Entrez GeneID:** [567](#)

**GeneBank  
Accession#:** [BC032589](#)

**Protein  
Accession#:** [AAH32589](#)

**Gene Name:** B2M

**Gene Alias:** -

**Gene  
Description:** beta-2-microglobulin

**Omim ID:** [109700](#), [241600](#)

**Gene Ontology:** [Hyperlink](#)

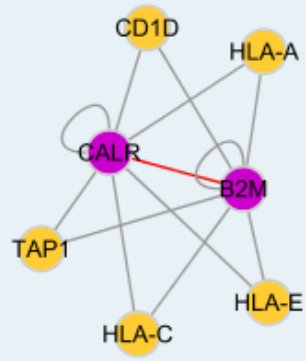
**Gene Summary:** This gene encodes a serum protein found in association with the major histocompatibility complex (MHC) class I heavy chain on the surface of nearly all nucleated cells. The protein has a predominantly beta-pleated sheet structure that can form amyloid fibrils in some pathological conditions. A mutation in this gene has been shown to result in hypercatabolic hypoproteinemia

**Other  
Designations:** beta chain of MHC class I molecules,beta-2-microglobin

---

### Interactome

---



### Gene Pathway

[Antigen processing and presentation](#)

### Related Disease

[Arthritis, Rheumatoid](#) [Cardiovascular Diseases](#) [Diabetes Mellitus, Type 2 Disease](#) [Edema](#)  
[Gastritis](#) [Genetic Predisposition to Disease](#) [Kidney Failure, Chronic](#) [Osteoarthritis](#)  
[Parkinson Disease](#) [Parkinson disease](#) [Stomach Neoplasms](#)

[服務條款](#) | [隱私權政策](#) | [著作及商標](#) | [網站地圖](#)

©2016 亞諾法生技股份有限公司 Abnova Corporation. 版權所有.