



# SZABO SCANDIC

Part of Europa Biosite

## Produktinformation



Forschungsprodukte & Biochemikalien



Zellkultur & Verbrauchsmaterial



Diagnostik & molekulare Diagnostik



Laborgeräte & Service

Weitere Information auf den folgenden Seiten!  
See the following pages for more information!



### Lieferung & Zahlungsart

siehe unsere [Liefer- und Versandbedingungen](#)

### Zuschläge

- Mindermengenzuschlag
- Trockeneiszuschlag
- Gefahrgutzuschlag
- Expressversand

### SZABO-SCANDIC HandelsgmbH

Quellenstraße 110, A-1100 Wien

T. +43(0)1 489 3961-0

F. +43(0)1 489 3961-7

[mail@szabo-scandic.com](mailto:mail@szabo-scandic.com)

[www.szabo-scandic.com](http://www.szabo-scandic.com)

[linkedin.com/company/szaboscandic](https://www.linkedin.com/company/szaboscandic) 

## B2M monoclonal antibody, clone 3F2

Catalog # : H00000567-M02

規格 : [ 100 ug ]

List All

### Specification

**Product Description:** Mouse monoclonal antibody raised against a full length native B2M.

**Immunogen:** Native purified human B2M.

**Host:** Mouse

**Reactivity:** Human

**Form:** Liquid

**Isotype:** IgG2a, kappa

**Quality Control Testing:** Antibody Reactive Against Native Protein

**Recommend Usage:** The optimal working dilution should be determined by the end user.

**Storage Buffer:** In PBS, pH 7.4

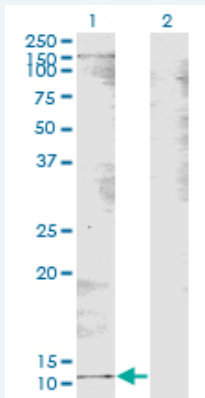
**Storage Instruction:** Store at -20°C or lower. Aliquot to avoid repeated freezing and thawing.

**MSDS:**  [Download](#)

**Datasheet:**  [Download](#)

### Applications

#### Western Blot (Transfected lysate)



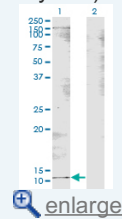
Western Blot analysis of expression in transfected 293T cell line by B2M monoclonal antibody, clone 3F2.

Lane 1: transfected lysate (Predicted MW: 13.7 KDa).


Lane 2: Non-transfected lysate.

### Application Image

Western Blot (Transfected lysate)



ELISA

 [Protocol Download](#)

ELISA

## Gene Information

Entrez GeneID: [567](#)

Gene Name: B2M

Gene Alias: -

Gene Description: beta-2-microglobulin

Description:

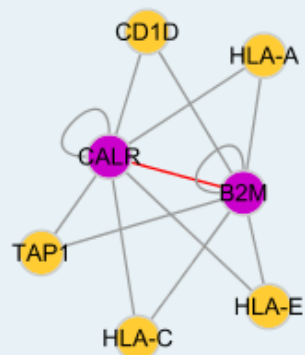
Omim ID: [109700](#), [241600](#)

Gene Ontology: [Hyperlink](#)

**Gene Summary:** This gene encodes a serum protein found in association with the major histocompatibility complex (MHC) class I heavy chain on the surface of nearly all nucleated cells. The protein has a predominantly beta-pleated sheet structure that can form amyloid fibrils in some pathological conditions. A mutation in this gene has been shown to result in hypercatabolic hypoproteinemia

**Other Designations:** beta chain of MHC class I molecules, beta-2-microglobin

## Interactome



## Gene Pathway

[Antigen processing and presentation](#)

## Related Disease

[Arthritis, Rheumatoid](#) [Cardiovascular Diseases](#) [Diabetes Mellitus, Type 2 Disease](#) [Edema](#) [Gastritis](#) [Genetic Predisposition to Disease](#) [Kidney Failure, Chronic](#) [Osteoarthritis](#) [Parkinson Disease](#) [Parkinson disease](#) [Stomach Neoplasms](#)