



SZABO SCANDIC

Part of Europa Biosite

Produktinformation



Forschungsprodukte & Biochemikalien



Zellkultur & Verbrauchsmaterial



Diagnostik & molekulare Diagnostik



Laborgeräte & Service

Weitere Information auf den folgenden Seiten!
See the following pages for more information!



Lieferung & Zahlungsart

siehe unsere [Liefer- und Versandbedingungen](#)

Zuschläge

- Mindermengenzuschlag
- Trockeneiszuschlag
- Gefahrgutzuschlag
- Expressversand

SZABO-SCANDIC HandelsgmbH

Quellenstraße 110, A-1100 Wien

T. +43(0)1 489 3961-0

F. +43(0)1 489 3961-7

mail@szabo-scandic.com

www.szabo-scandic.com

[linkedin.com/company/szaboscandic](https://www.linkedin.com/company/szaboscandic) 

B2M 293T Cell Transient Overexpression Lysate(Denatured)

Catalog # : H00000567-T01

規格 : [100 uL]

List All

Specification

Transfected Cell Line: 293T

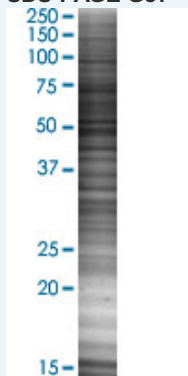
Plasmid: pCMV-B2M full-length

Host: Human

Theoretical MW (kDa): 13.7

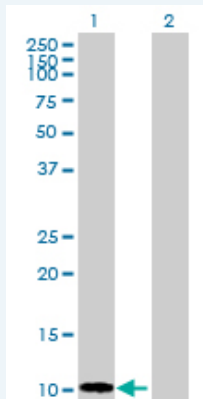
Quality Control Testing: Transient overexpression cell lysate was tested with Anti-B2M antibody (H00000567-D01P) by Western Blots.

SDS-PAGE Gel



B2M transfected lysate.

Western Blot



Lane 1: B2M transfected lysate (13.70 KDa)

Lane 2: Non-transfected lysate.

Storage Buffer: 1X Sample Buffer (50 mM Tris-HCl, 2% SDS, 10% glycerol, 300 mM 2-mercaptoethanol, 0.01% Bromophenol blue)

Storage Instruction: Store at -80°C. Aliquot to avoid repeated freezing and thawing.

MSDS:  [Download](#)

Applications

Western Blot

Gene Information

Entrez GeneID: [567](#)

GeneBank [NM_004048](#)
Accession#:

Protein [NP_004039.1](#)
Accession#:

Gene Name: B2M

Gene Alias: -

Gene Description: beta-2-microglobulin

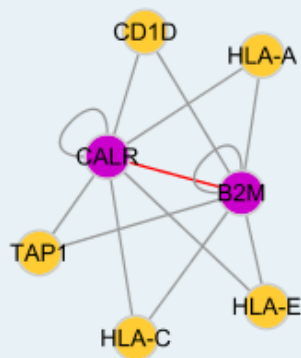
Omim ID: [109700](#), [241600](#)

Gene Ontology: [Hyperlink](#)

Gene Summary: This gene encodes a serum protein found in association with the major histocompatibility complex (MHC) class I heavy chain on the surface of nearly all nucleated cells. The protein has a predominantly beta-pleated sheet structure that can form amyloid fibrils in some pathological conditions. A mutation in this gene has been shown to result in hypercatabolic hypoproteinemia

Other Designations: beta chain of MHC class I molecules, beta-2-microglobin

Interactome



Gene Pathway

[Antigen processing and presentation](#)

Related Disease

[Arthritis, Rheumatoid](#) [Cardiovascular Diseases](#) [Diabetes Mellitus, Type 2](#) [Disease](#) [Edema](#) [Gastritis](#) [Genetic Predisposition to Disease](#) [Kidney Failure, Chronic](#) [Osteoarthritis](#) [Parkinson Disease](#) [Parkinson disease](#) [Stomach Neoplasms](#)

[服務條款](#) | [隱私權政策](#) | [著作及商標](#) | [網站地圖](#)

©2016 亞諾法生技股份有限公司 Abnova Corporation. 版權所有.