



SZABO SCANDIC

Part of Europa Biosite

Produktinformation



Forschungsprodukte & Biochemikalien



Zellkultur & Verbrauchsmaterial



Diagnostik & molekulare Diagnostik



Laborgeräte & Service

Weitere Information auf den folgenden Seiten!
See the following pages for more information!



Lieferung & Zahlungsart

siehe unsere [Liefer- und Versandbedingungen](#)

Zuschläge

- Mindermengenzuschlag
- Trockeneiszuschlag
- Gefahrgutzuschlag
- Expressversand

SZABO-SCANDIC HandelsgmbH

Quellenstraße 110, A-1100 Wien

T. +43(0)1 489 3961-0

F. +43(0)1 489 3961-7

mail@szabo-scandic.com

www.szabo-scandic.com

[linkedin.com/company/szaboscandic](https://www.linkedin.com/company/szaboscandic) 

BAD purified MaxPab rabbit polyclonal antibody (D01P) MaxPab®

Catalog # : H00000572-D01P

規格 : [100 ug]

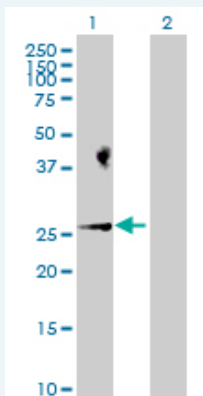
[List All](#)

Specification

Product Description:	Rabbit polyclonal antibody raised against a full-length human BAD protein.
Immunogen:	BAD (NP_004313.1, 1 a.a. ~ 168 a.a) full-length human protein.
Sequence:	MFQIPEFEPSEQEDSSSAERGLGPSPAGDGPSPSGKHHHRQAPGLLWD ASHQQEQPTSSSHGGAGAVEIRSRHSSYPAGTEDDEGMGEEPSPFRG RSRSAPPNLWAAQRYGRELRRMSDEFVDSFKKGLPRPKSAGTATQMR QSSSWTRVVFQSWWDRNLGRGSSAPSQ
Host:	Rabbit
Reactivity:	Human
Quality Control Testing:	Antibody reactive against mammalian transfected lysate.
Storage Buffer:	In 1x PBS, pH 7.4
Storage Instruction:	Store at -20°C or lower. Aliquot to avoid repeated freezing and thawing.
MSDS:	Download
Datasheet:	Download

Applications

Western Blot (Transfected lysate)



Western Blot analysis of BAD expression in transfected 293T cell line ([H00000572-T01](#)) by BAD MaxPab polyclonal antibody.

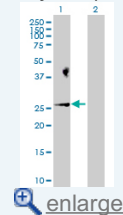
Lane 1: BAD transfected lysate(18.40 KDa).
Lane 2: Non-transfected lysate.

[Protocol Download](#)

In situ Proximity Ligation Assay (Cell)

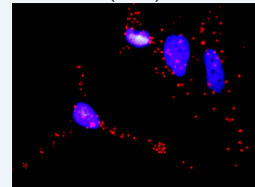
Application Image

Western Blot (Transfected lysate)



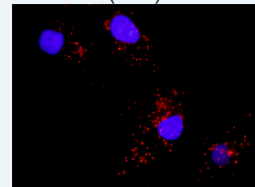
[enlarge](#)

In situ Proximity Ligation Assay (Cell)

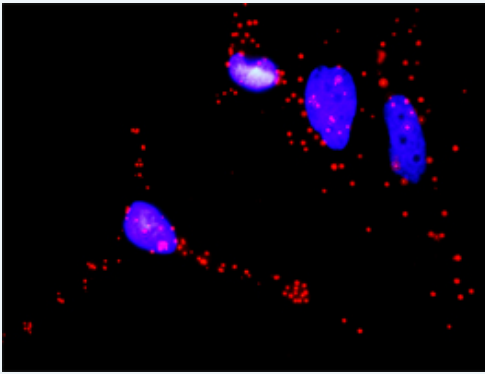


[enlarge](#)

In situ Proximity Ligation Assay (Cell)

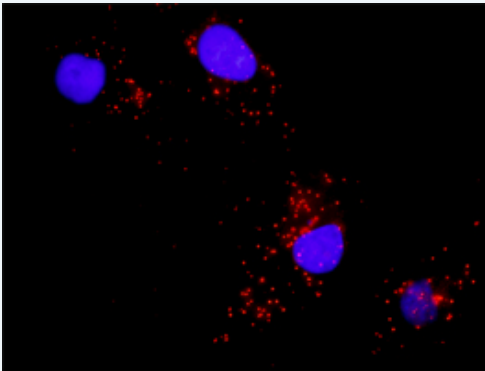


[enlarge](#)



Proximity Ligation Analysis of protein-protein interactions between BAD and RAF1. HeLa cells were stained with anti-BAD rabbit purified polyclonal 1:1200 and anti-RAF1 mouse monoclonal antibody 1:50. Each red dot represents the detection of protein-protein interaction complex, and nuclei were counterstained with DAPI (blue).

***In situ* Proximity Ligation Assay (Cell)**



Proximity Ligation Analysis of protein-protein interactions between BAD and MAPK8. Mahlavu cells were stained with anti-BAD rabbit purified polyclonal 1:1200 and anti-MAPK8 mouse monoclonal antibody 1:50. Each red dot represents the detection of protein-protein interaction complex, and nuclei were counterstained with DAPI (blue).

Gene Information

Entrez GeneID: [572](#)

**GeneBank
Accession#:** [NM_004322](#)

**Protein
Accession#:** [NP_004313.1](#)

Gene Name: BAD

Gene Alias: BBC2,BCL2L8

**Gene
Description:** BCL2-associated agonist of cell death

Omim ID: [603167](#)

Gene Ontology: [Hyperlink](#)

Gene Summary: The protein encoded by this gene is a member of the BCL-2 family. BCL-2 family members are known to be regulators of programmed cell death. This protein positively regulates cell apoptosis by forming heterodimers with BCL-xL and BCL-2, and reversing their death repressor activity. Proapoptotic activity of this protein is regulated through its phosphorylation. Protein kinases AKT and MAP kinase, as well as protein phosphatase calcineurin were found to be involved in the regulation of this protein. Alternative splicing of this gene results in two transcript variants which encode the same isoform. [provided by RefSeq]

Other BCL-X/BCL-2 binding protein,BCL2-antagonist of cell death
Designations: protein,BCL2-binding component 6,BCL2-binding protein

Gene Pathway

[Acute myeloid leukemia](#) [Alzheimer's disease](#) [Amyotrophic lateral sclerosis \(ALS\)](#) [Apoptosis](#)
[Chronic myeloid leukemia](#) [Colorectal cancer](#) [Endometrial cancer](#) [ErbB signaling pathway](#)
[Focal adhesion](#) [Insulin signaling pathway](#) [Melanoma](#) [Neurotrophin signaling pathway](#)
[Non-small cell lung cancer](#) [Pancreatic cancer](#) [Pathways in cancer](#) [Prostate cancer](#)
[VEGF signaling pathway](#)

Related Disease

[Cardiovascular Diseases](#) [Diabetes Mellitus, Type 2](#) [Edema](#)
[Genetic Predisposition to Disease](#) [Lymphoma, Non-Hodgkin](#) [Parkinson Disease](#)
[Parkinson disease](#) [Thyroid Neoplasms](#)

[服務條款](#) | [隱私權政策](#) | [著作及商標](#) | [網站地圖](#)

©2016 亞諾法生技股份有限公司 Abnova Corporation. 版權所有.