



# SZABO SCANDIC

Part of Europa Biosite

## Produktinformation



Forschungsprodukte & Biochemikalien



Zellkultur & Verbrauchsmaterial



Diagnostik & molekulare Diagnostik



Laborgeräte & Service

Weitere Information auf den folgenden Seiten!  
See the following pages for more information!



### Lieferung & Zahlungsart

siehe unsere [Liefer- und Versandbedingungen](#)

### Zuschläge

- Mindermengenzuschlag
- Trockeneiszuschlag
- Gefahrgutzuschlag
- Expressversand

### SZABO-SCANDIC HandelsgmbH

Quellenstraße 110, A-1100 Wien

T. +43(0)1 489 3961-0

F. +43(0)1 489 3961-7

[mail@szabo-scandic.com](mailto:mail@szabo-scandic.com)

[www.szabo-scandic.com](http://www.szabo-scandic.com)

[linkedin.com/company/szaboscandic](https://www.linkedin.com/company/szaboscandic) 

## BAG1 MaxPab mouse polyclonal antibody (B01) MaxPab®

Catalog # : H00000573-B01

規格 : [ 50 uL ]

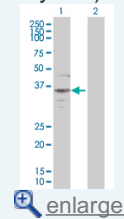
[List All](#)

### Specification

|                                 |   |
|---------------------------------|---|
| <b>Product Description:</b>     | Mouse polyclonal antibody raised against a full-length human BAG1 protein.  |
| <b>Immunogen:</b>               | BAG1 (ENSP00000369026, 1 a.a. ~ 274 a.a) full-length human protein.   |
| <b>Sequence:</b>                | MKKKTRRRSTRSEELTRSEELTLSEEATWSEEATQSEEATQGEEMNRS<br>QEVTRDEESTRSEEVTREEMAAAGLTVTVTHSNEKHDLHVT SQQGSSE<br>PVVQDLAQVVEEVIGVPQSFQKLIFKGKSLKEMETPLSALGIQDGCVRML<br>IGKKNSPQEEVELKKLKHLEKSVEKIADQLEELNKELTGIQQGFLPKDLQA<br>EALCKLDRRVKATIEQFMKILEEIDTLILPENFKDSRLKRKGLVKKVQAFLA<br>ECDTVEQNICQETERLQSTNFALAE |
| <b>Host:</b>                    | Mouse   |
| <b>Reactivity:</b>              | Human   |
| <b>Quality Control Testing:</b> | Antibody reactive against mammalian transfected lysate.   |
| <b>Storage Buffer:</b>          | No additive   |
| <b>Storage Instruction:</b>     | Store at -20°C or lower. Aliquot to avoid repeated freezing and thawing.  |
| <b>Note:</b>                    | For IHC and IF applications, antibody purification with Protein A will be needed prior to use.  |
| <b>MSDS:</b>                    | <a href="#">Download</a>  |
| <b>Datasheet:</b>               | <a href="#">Download</a>  |

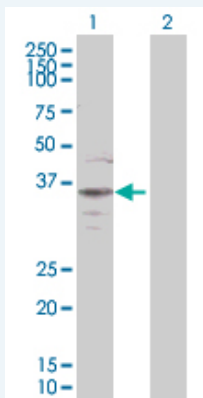
### Application Image

Western Blot (Transfected lysate)



### Applications

#### Western Blot (Transfected lysate)



Western Blot analysis of BAG1 expression in transfected 293T cell line (H00000573-T01) by BAG1 MaxPab polyclonal antibody.

Lane 1: BAG1 transfected lysate(30.14 KDa).

Lane 2: Non-transfected lysate.

## Gene Information

---

**Entrez GeneID:** [573](#)

---

**GeneBank  
Accession#:** [ENST00000379704](#)

---

**Protein  
Accession#:** [ENSP00000369026](#)

---

**Gene Name:** BAG1

---

**Gene Alias:** RAP46

---

**Gene  
Description:** BCL2-associated athanogene

---

**Omim ID:** [601497](#)

---

**Gene Ontology:** [Hyperlink](#)

---

**Gene Summary:** The oncogene BCL2 is a membrane protein that blocks a step in a pathway leading to apoptosis or programmed cell death. The protein encoded by this gene binds to BCL2 and is referred to as BCL2-associated athanogene. It enhances the anti-apoptotic effects of BCL2 and represents a link between growth factor receptors and anti-apoptotic mechanisms. At least three protein isoforms are encoded by this mRNA through the use of a non-AUG (CUG) start site, and alternative, downstream, AUG translation initiation sites. [provided by RefSeq]

---

**Other  
Designations:** BCL2-associated athanogene 1

---

## Related Disease

---

[Cardiovascular Diseases](#) [Diabetes Mellitus, Type 2](#) [Edema](#) [Head and Neck Neoplasms](#)  
[Narcolepsy](#) [Narcolepsy](#) [Neoplasm Recurrence, Local](#) [Neoplasms, Second Primary](#)