



# SZABO SCANDIC

Part of Europa Biosite

## Produktinformation



Forschungsprodukte & Biochemikalien



Zellkultur & Verbrauchsmaterial



Diagnostik & molekulare Diagnostik



Laborgeräte & Service

Weitere Information auf den folgenden Seiten!  
See the following pages for more information!



### Lieferung & Zahlungsart

siehe unsere [Liefer- und Versandbedingungen](#)

### Zuschläge

- Mindermengenzuschlag
- Trockeneiszuschlag
- Gefahrgutzuschlag
- Expressversand

### SZABO-SCANDIC HandelsgmbH

Quellenstraße 110, A-1100 Wien

T. +43(0)1 489 3961-0

F. +43(0)1 489 3961-7

[mail@szabo-scandic.com](mailto:mail@szabo-scandic.com)

[www.szabo-scandic.com](http://www.szabo-scandic.com)

[linkedin.com/company/szaboscandic](https://www.linkedin.com/company/szaboscandic) 

## BAG1 monoclonal antibody (M02), clone 2D3

Catalog # : H00000573-M02

規格 : [ 100 ug ]

[List All](#)

### Specification

**Product Description:** Mouse monoclonal antibody raised against a partial recombinant BAG1.

**Immunogen:** BAG1 (NP\_004314, 241 a.a. ~ 345 a.a) partial recombinant protein with GST tag. MW of the GST tag alone is 26 KDa.

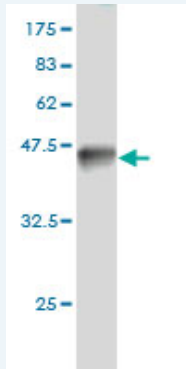
**Sequence:** EKIADQLEELNKELTGIQQGFLPKDLQAEALCKLDRRVKATIEQFMKILEEI  
DTLILPENFKDSRLKRKGLVKKVQAF LAECDTVEQNICQETERLQSTNFA  
LAE

**Host:** Mouse

**Reactivity:** Human, Mouse, Rat

**Isotype:** IgG2a Kappa

**Quality Control Testing:** Antibody Reactive Against Recombinant Protein.



Western Blot detection against Immunogen (37.29 KDa) .

**Storage Buffer:** In 1x PBS, pH 7.4

**Storage Instruction:** Store at -20°C or lower. Aliquot to avoid repeated freezing and thawing.

**MSDS:** [Download](#)

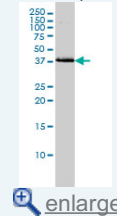
**Datasheet:** [Download](#)

### Applications

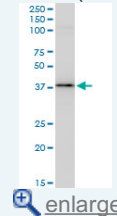
Western Blot (Cell lysate)

### Application Image

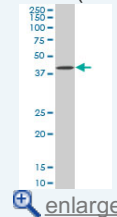
Western Blot (Cell lysate)



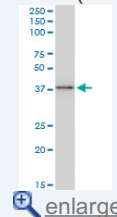
Western Blot (Cell lysate)



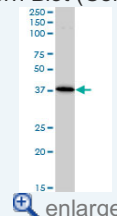
Western Blot (Cell lysate)



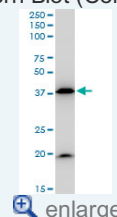
Western Blot (Cell lysate)



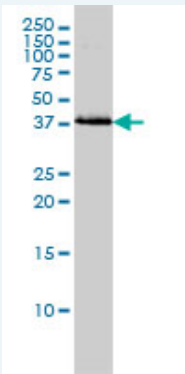
Western Blot (Cell lysate)



Western Blot (Cell lysate)



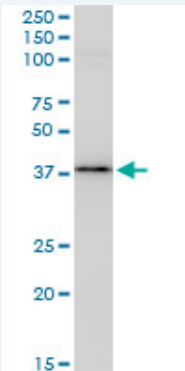
Western Blot (Recombinant protein)



BAG1 monoclonal antibody (M02), clone 2D3 Western Blot analysis of BAG1 expression in HeLa ( Cat # L013V1 ).

 [Protocol Download](#)

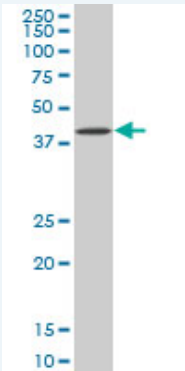
**Western Blot (Cell lysate)**




BAG1 monoclonal antibody (M02), clone 2D3. Western Blot analysis of BAG1 expression in PC-12(Cat # L012V1 ).

 [Protocol Download](#)

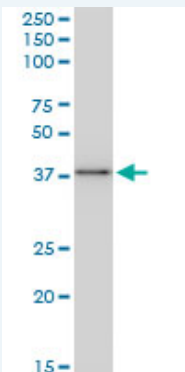
**Western Blot (Cell lysate)**



BAG1 monoclonal antibody (M02), clone 2D3. Western Blot analysis of BAG1 expression in LNCaP ( Cat # L004V1 ).

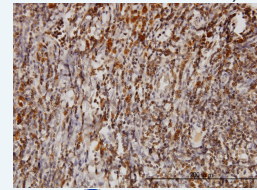
 [Protocol Download](#)

**Western Blot (Cell lysate)**



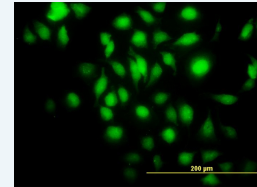
BAG1 monoclonal antibody (M02), clone 2D3. Western Blot analysis of BAG1 expression in Raw 264.7(Cat # L024V1 ).


**Immunohistochemistry**  
(Formalin/PFA-fixed paraffin-embedded sections)



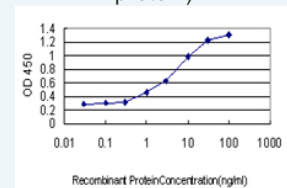
 [enlarge](#)


**Immunofluorescence**



 [enlarge](#)

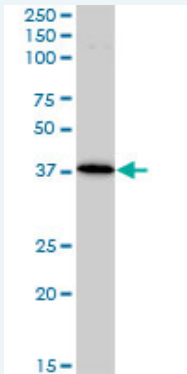
**Sandwich ELISA (Recombinant protein)**



 [enlarge](#)

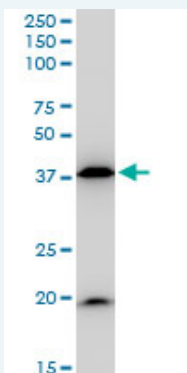
**ELISA**

**Western Blot (Cell lysate)**



BAG1 monoclonal antibody (M02), clone 2D3. Western Blot analysis of BAG1 expression in Jurkat ( Cat # L017V1 ).

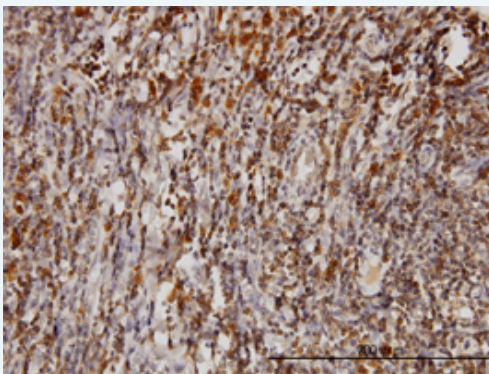
**Western Blot (Cell lysate)**




BAG1 monoclonal antibody (M02), clone 2D3. Western Blot analysis of BAG1 expression in NIH/3T3(Cat # L018V1 ).

**Western Blot (Recombinant protein)**

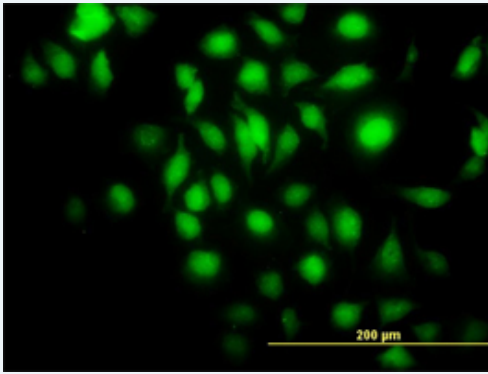
**Immunohistochemistry (Formalin/PFA-fixed paraffin-embedded sections)**



 enlarge this image

Immunoperoxidase of monoclonal antibody to BAG1 on formalin-fixed paraffin-embedded human tonsil. [antibody concentration 3 ug/ml]

**Immunofluorescence**

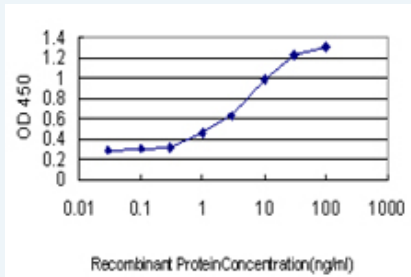


[enlarge this image](#)

Immunofluorescence of monoclonal antibody to BAG1 on HeLa cell. [antibody concentration 35 ug/ml]

[Protocol Download](#)

### Sandwich ELISA (Recombinant protein)



Detection limit for recombinant GST tagged BAG1 is approximately 0.03ng/ml as a capture antibody.

[Protocol Download](#)

### ELISA

### Gene Information

Entrez GeneID: [573](#)

GeneBank [NM\\_004323](#)

Accession#:

Protein [NP\\_004314](#)

Accession#:

Gene Name: BAG1

Gene Alias: RAP46

Gene Description: BCL2-associated athanogene

Omim ID: [601497](#)

Gene Ontology: [Hyperlink](#)

**Gene Summary:** The oncogene BCL2 is a membrane protein that blocks a step in a pathway leading to apoptosis or programmed cell death. The protein encoded by this gene binds to BCL2 and is referred to as BCL2-associated athanogene. It enhances the anti-apoptotic effects of BCL2 and represents a link between growth factor receptors and anti-apoptotic mechanisms. At least three protein isoforms are encoded by this mRNA through the use of a non-AUG (CUG) start site, and alternative, downstream, AUG translation initiation sites. [provided by RefSeq]

Other Designations: BCL2-associated athanogene 1

## Related Disease

[Cardiovascular Diseases](#) [Diabetes Mellitus, Type 2](#) [Edema](#) [Head and Neck Neoplasms](#)  
[Narcolepsy](#) [Narcolepsy](#) [Neoplasm Recurrence, Local](#) [Neoplasms, Second Primary](#)

[服務條款](#) | [隱私權政策](#) | [著作及商標](#) | [網站地圖](#)

©2016 亞諾法生技股份有限公司 Abnova Corporation. 版權所有.