



SZABO SCANDIC

Part of Europa Biosite

Produktinformation



Forschungsprodukte & Biochemikalien



Zellkultur & Verbrauchsmaterial



Diagnostik & molekulare Diagnostik



Laborgeräte & Service

Weitere Information auf den folgenden Seiten!
See the following pages for more information!



Lieferung & Zahlungsart

siehe unsere [Liefer- und Versandbedingungen](#)

Zuschläge

- Mindermengenzuschlag
- Trockeneiszuschlag
- Gefahrgutzuschlag
- Expressversand

SZABO-SCANDIC HandelsgmbH

Quellenstraße 110, A-1100 Wien

T. +43(0)1 489 3961-0

F. +43(0)1 489 3961-7

mail@szabo-scandic.com

www.szabo-scandic.com

[linkedin.com/company/szaboscandic](https://www.linkedin.com/company/szaboscandic) 



BARD1 monoclonal antibody (M01), clone 2A11

Catalog # : H00000580-M01

規格 : [100 ug]

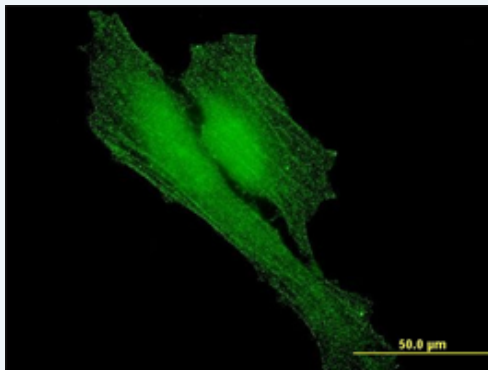
[List All](#)


Specification

Product Description:	Mouse monoclonal antibody raised against a partial recombinant BARD1.
Immunogen:	BARD1 (NP_000456, 658 a.a. ~ 757 a.a) partial recombinant protein with GST tag. MW of the GST tag alone is 26 KDa.
Sequence:	RRSRLNREQLLPKLF DGCYFYLVGTFKHPKDNLIKLVTAGGGQLSRK PKPDSVDTQTINTVAYHARPDS DQRFCYIYEDLCNYHPERVRQGK VWK
Host:	Mouse
Reactivity:	Human
Isotype:	IgG2a Kappa
Quality Control Testing:	Antibody Reactive Against Recombinant Protein.
Storage Buffer:	In 1x PBS, pH 7.4
Storage Instruction:	Store at -20°C or lower. Aliquot to avoid repeated freezing and thawing.
MSDS:	 Download
Datasheet:	 Download


Applications

Immunofluorescence



 [enlarge this image](#)

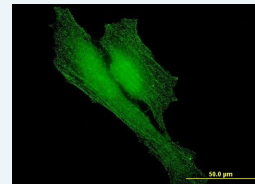
Immunofluorescence of monoclonal antibody to BARD1 on HeLa cell . [antibody concentration 10 ug/ml]

 [Protocol Download](#)

Sandwich ELISA (Recombinant protein)

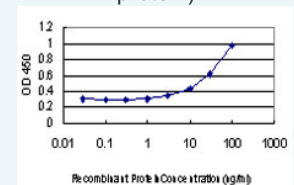
Application Image


Immunofluorescence



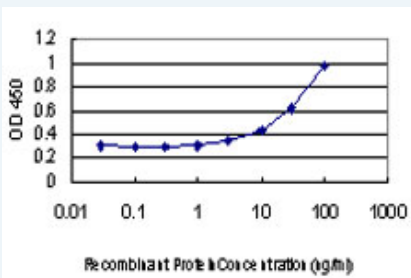
 [enlarge](#)

Sandwich ELISA (Recombinant protein)



 [enlarge](#)

ELISA



Detection limit for recombinant GST tagged BARD1 is approximately 3ng/ml as a capture antibody.

 [Protocol Download](#)

ELISA

Gene Information

Entrez GeneID: [580](#)

GeneBank [NM_000465](#)

Accession#:

Protein [NP_000456](#)

Accession#:

Gene Name: BARD1

Gene Alias: -

Gene Description: BRCA1 associated RING domain 1

Description:

Omim ID: [114480](#), [601593](#)

Gene Ontology: [Hyperlink](#)

Gene Summary: This gene encodes a protein which interacts with the N-terminal region of BRCA1. In addition to its ability to bind BRCA1 in vivo and in vitro, it shares homology with the 2 most conserved regions of BRCA1: the N-terminal RING motif and the C-terminal BRCT domain. The RING motif is a cysteine-rich sequence found in a variety of proteins that regulate cell growth, including the products of tumor suppressor genes and dominant protooncogenes. This protein also contains 3 tandem ankyrin repeats. The BARD1/BRCA1 interaction is disrupted by tumorigenic amino acid substitutions in BRCA1, implying that the formation of a stable complex between these proteins may be an essential aspect of BRCA1 tumor suppression. This protein may be the target of oncogenic mutations in breast or ovarian cancer. [provided by RefSeq]

Other Designations: BRCA1-associated RING domain 1, BRCA1-associated RING domain gene 1

Related Disease

[Adenocarcinoma](#) [Ataxia telangiectasia](#) [Breast cancer](#) [Breast Neoplasms](#) [Breast Neoplasms, Male](#) [Carcinoma in Situ](#) [Carcinoma, Ductal, Breast](#) [Carcinoma, Intraductal, Noninfiltrating](#) [Carcinoma, Lobular](#) [Carcinoma, Medullary](#) [Colorectal Neoplasms](#) [Esophageal Neoplasms](#) [Genetic Predisposition to Disease](#) [Lung Neoplasms](#) [Neoplasms, Glandular and Epithelial](#) [Neoplastic Syndromes, Hereditary](#) [Neuroblastoma](#) [Ovarian cancer](#) [Ovarian Neoplasms](#)

... see more

