



# SZABO SCANDIC

Part of Europa Biosite

## Produktinformation



Forschungsprodukte & Biochemikalien



Zellkultur & Verbrauchsmaterial



Diagnostik & molekulare Diagnostik



Laborgeräte & Service

Weitere Information auf den folgenden Seiten!  
See the following pages for more information!



### Lieferung & Zahlungsart

siehe unsere [Liefer- und Versandbedingungen](#)

### Zuschläge

- Mindermengenzuschlag
- Trockeneiszuschlag
- Gefahrgutzuschlag
- Expressversand

### SZABO-SCANDIC HandelsgmbH

Quellenstraße 110, A-1100 Wien

T. +43(0)1 489 3961-0

F. +43(0)1 489 3961-7

[mail@szabo-scandic.com](mailto:mail@szabo-scandic.com)

[www.szabo-scandic.com](http://www.szabo-scandic.com)

[linkedin.com/company/szaboscandic](https://www.linkedin.com/company/szaboscandic) 

## BAX polyclonal antibody (A02)

Catalog # : H00000581-A02

規格 : [ 50 uL ]

List All

### Specification

**Product Description:** Mouse polyclonal antibody raised against a partial recombinant BAX.

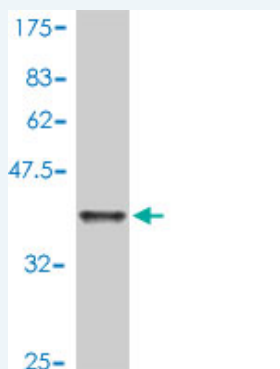
**Immunogen:** BAX (NP\_620116, 1 a.a. ~ 100 a.a) partial recombinant protein with GST tag.

**Sequence:** MDGSGEQPRGGGPTSSSEQIMKTGALLLQGFIQDRAGRMGGEAPELAL  
DPVPQDASTKKLSECLKRIGDELDSNMELQRMIAAVDTDSPREVFVRVA  
ADMF

**Host:** Mouse

**Reactivity:** Human

**Quality Control Testing:** Antibody Reactive Against Recombinant Protein.



Western Blot detection against Immunogen (37.11 kDa) .

**Storage Buffer:** 50 % glycerol

**Storage Instruction:** Store at -20°C or lower. Aliquot to avoid repeated freezing and thawing.

**MSDS:** [Download](#)

**Datasheet:** [Download](#)

### Applications

**Western Blot (Recombinant protein)**

[Protocol Download](#)

**ELISA**

### Gene Information

**Entrez GeneID:** [581](#)

**GeneBank Accession#:** [NM\\_138761](#)

### Application Image

Western Blot (Recombinant protein)

ELISA

**Protein** [NP\\_620116](#)

**Accession#:**

**Gene Name:** BAX

**Gene Alias:** BCL2L4

**Gene Description:** BCL2-associated X protein

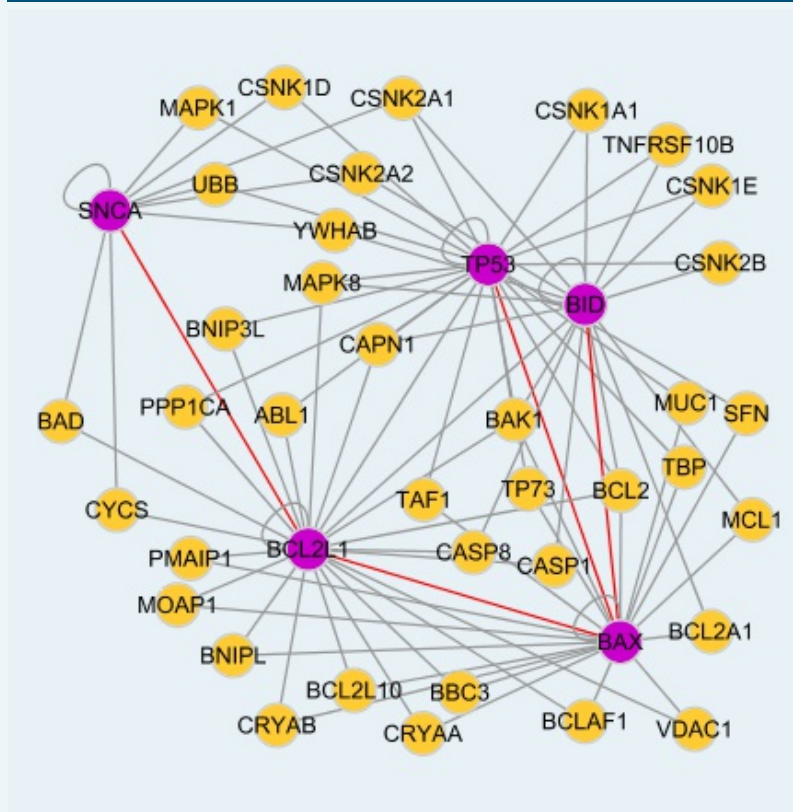
**Omim ID:** [600040](#)

**Gene Ontology:** [Hyperlink](#)

**Gene Summary:** The protein encoded by this gene belongs to the BCL2 protein family. BCL2 family members form hetero- or homodimers and act as anti- or pro-apoptotic regulators that are involved in a wide variety of cellular activities. This protein forms a heterodimer with BCL2, and functions as an apoptotic activator. This protein is reported to interact with, and increase the opening of, the mitochondrial voltage-dependent anion channel (VDAC), which leads to the loss in membrane potential and the release of cytochrome c. The expression of this gene is regulated by the tumor suppressor P53 and has been shown to be involved in P53-mediated apoptosis. Multiple alternatively spliced transcript variants, which encode different isoforms, have been reported for this gene. [provided by RefSeq]

**Other Designations:** apoptosis regulator BAX

### Interactome



### Gene Pathway

[Amyotrophic lateral sclerosis \(ALS\)](#) [Apoptosis](#) [Colorectal cancer](#) [Huntington's disease](#)  
[Neurotrophin signaling pathway](#) [p53 signaling pathway](#) [Pathways in cancer](#) [Prion diseases](#)

### Related Disease

[Adenocarcinoma](#) [Ataxia Telangiectasia](#) [Carcinoma, Squamous Cell](#)

[Cardiovascular Diseases](#) [Colon cancer](#) [Colonic Neoplasms](#) [Diabetes Mellitus, Type 2](#)  
[Disease Progression](#) [Edema](#) [Esophageal Neoplasms](#) [Genetic Predisposition to Disease](#)  
[Genomic Instability](#) [Head and Neck Neoplasms](#) [Helicobacter Infections](#)  
[Hematologic Diseases](#) [Hodgkin Disease](#) [Kidney Failure, Chronic](#)  
[Leukemia, chronic myeloid](#) [Leukemia, Lymphocytic, Chronic](#)

**... see more**

---

[服務條款](#) | [隱私權政策](#) | [著作及商標](#) | [網站地圖](#)

©2016 亞諾法生技股份有限公司 Abnova Corporation. 版權所有.