



# SZABO SCANDIC

Part of Europa Biosite

## Produktinformation



Forschungsprodukte & Biochemikalien



Zellkultur & Verbrauchsmaterial



Diagnostik & molekulare Diagnostik



Laborgeräte & Service

Weitere Information auf den folgenden Seiten!  
See the following pages for more information!



### Lieferung & Zahlungsart

siehe unsere [Liefer- und Versandbedingungen](#)

### Zuschläge

- Mindermengenzuschlag
- Trockeneiszuschlag
- Gefahrgutzuschlag
- Expressversand

### SZABO-SCANDIC HandelsgmbH

Quellenstraße 110, A-1100 Wien

T. +43(0)1 489 3961-0

F. +43(0)1 489 3961-7

[mail@szabo-scandic.com](mailto:mail@szabo-scandic.com)

[www.szabo-scandic.com](http://www.szabo-scandic.com)

[linkedin.com/company/szaboscandic](https://www.linkedin.com/company/szaboscandic) 

## BBS2 purified MaxPab mouse polyclonal antibody (B01P) MaxPab®

Catalog # : H00000583-B01P

規格 : [ 50 ug ]

[List All](#)

### Specification

**Product Description:** Mouse polyclonal antibody raised against a full-length human BBS2 protein.

**Immunogen:** BBS2 (AAH14140.1, 1 a.a. ~ 721 a.a) full-length human protein.

**Sequence:**  
 MLLPVFTLKLRLHKISPRMVAIGRYDGHPCLAATQTGKVFIIHNPTRNQ  
 HVSASRVFQSPLESDVSLLNINQAVSCLTAGVLNPELGYDALLVGTQTNL  
 LAYDVYNNSDLFYREVADGANVVLTGLGDISSPLAIGGNCALQGFNHE  
 GSDLFWVTVTGDMVNSLALCDFDGDGKELLVGSEDFDIRVFKEDIVAE  
 MTETEIVTSLCPMYGSRFGYALSNGTVGVYDKTSRYWRIKSKNHAMSIHA  
 FDLNSDGVNELITGWSNGKVDARSVRTGEVIFKDNFSSAIGVVEGDYR  
 MDGHIQLICCSVDGEIRGYLPGTAEMRGNLMDTSAEQDLIRELSQKKQNL  
 LLELRNYEENAKAELASPLNEADGHRGIIPANTRLHTTSLVSLGNETQTAH  
 TELRISTSNDTIIRAVLIFAEGIFTGESHVHPSIHNLSSSICIPVPPKDVVPD  
 LHLKAFVGYRSTQFHFESTRQLPRFSMYALTSLDPASEPISYVNFITAE  
 RAQRVWWWLGGNFLLPEDTHIQNAPFQVCFVSLRNGGHLHIKIKLSGEITI  
 NTDDIDLAGDIIQSMASFFAIEDLQVEADFVYFEEELRKVLVKVDEYHSVH  
 QKLSADMADHSNLRSLLVGAEDARLMRDMKTMKSRYMELYDLNRDLLN  
 GYKIRCNNHTELLGNLKAQNQAIQRAGRLRVGKPKNQVITACRDAIRSNNI  
 NTLFKIMRVGTASS

**Host:** Mouse

**Reactivity:** Human

**Quality Control Testing:** Antibody reactive against mammalian transfected lysate.

**Storage Buffer:** In 1x PBS, pH 7.4

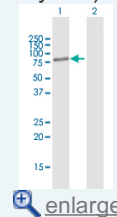
**Storage Instruction:** Store at -20°C or lower. Aliquot to avoid repeated freezing and thawing.


**MSDS:**  [Download](#)

**Datasheet:**  [Download](#)

### Application Image

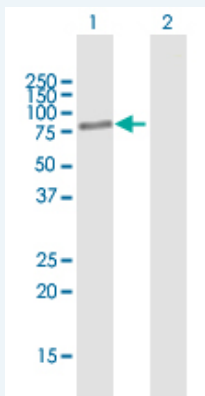
Western Blot (Transfected lysate)



 [enlarge](#)

### Applications

Western Blot (Transfected lysate)



Western Blot analysis of BBS2 expression in transfected 293T cell line ([H00000583-T01](#)) by BBS2 MaxPab polyclonal antibody.

Lane 1: BBS2 transfected lysate(79.31 KDa).

Lane 2: Non-transfected lysate.

 [Protocol Download](#)

---

### Gene Information

---

**Entrez GeneID:** [583](#)

**GeneBank  
Accession#:** [BC014140.2](#)

**Protein  
Accession#:** [AAH14140.1](#)

**Gene Name:** BBS2

**Gene Alias:** BBS,MGC20703

**Gene  
Description:** Bardet-Biedl syndrome 2

**Omim ID:** [209900](#), [606151](#)

**Gene Ontology:** [Hyperlink](#)

**Gene Summary:** This gene is a member of the Bardet-Biedl syndrome (BBS) gene family. Bardet-Biedl syndrome is an autosomal recessive disorder characterized by severe pigmentary retinopathy, obesity, polydactyly, renal malformation and mental retardation. The proteins encoded by BBS gene family members are structurally diverse and the similar phenotypes exhibited by mutations in BBS gene family members is likely due to their shared roles in cilia formation and function. Many BBS proteins localize to the basal bodies, ciliary axonemes, and pericentriolar regions of cells. BBS proteins may also be involved in intracellular trafficking via microtubule-related transport. The protein encoded by this gene forms a multiprotein BBSome complex with six other BBS proteins

**Other  
Designations:** Bardet-Biedl syndrome 2 protein

---

### Related Disease

---

[Bardet-Biedl Syndrome](#) [Cardiovascular Diseases](#) [Diabetes Mellitus, Type 2](#) [Edema](#) [Obesity](#) [Obesity](#) [Retinal Diseases](#)