



SZABO SCANDIC

Part of Europa Biosite

Produktinformation



Forschungsprodukte & Biochemikalien



Zellkultur & Verbrauchsmaterial



Diagnostik & molekulare Diagnostik



Laborgeräte & Service

Weitere Information auf den folgenden Seiten!
See the following pages for more information!



Lieferung & Zahlungsart

siehe unsere [Liefer- und Versandbedingungen](#)

Zuschläge

- Mindermengenzuschlag
- Trockeneiszuschlag
- Gefahrgutzuschlag
- Expressversand

SZABO-SCANDIC HandelsgmbH

Quellenstraße 110, A-1100 Wien

T. +43(0)1 489 3961-0

F. +43(0)1 489 3961-7

mail@szabo-scandic.com

www.szabo-scandic.com

[linkedin.com/company/szaboscandic](https://www.linkedin.com/company/szaboscandic) 

BCAT1 293T Cell Transient Overexpression Lysate(Denatured)

Catalog # : H00000586-T01

規格 : [100 uL]

List All

Specification

Transfected Cell Line: 293T

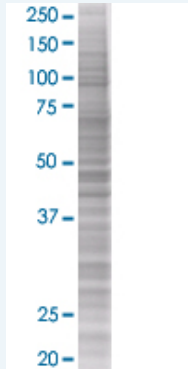
Plasmid: pCMV-BCAT1 full-length

Host: Human

Theoretical MW (kDa): 35.31

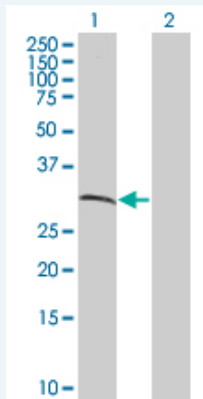
Quality Control Testing: Transient overexpression cell lysate was tested with Anti-BCAT1 antibody ([H00000586-B01](#)) by Western Blots.

SDS-PAGE Gel



BCAT1 transfected lysate.

Western Blot



Lane 1: BCAT1 transfected lysate (35.31 KDa)

Lane 2: Non-transfected lysate.

Storage Buffer: 1X Sample Buffer (50 mM Tris-HCl, 2% SDS, 10% glycerol, 300 mM 2-mercaptoethanol, 0.01% Bromophenol blue)

Storage Instruction: Store at -80°C. Aliquot to avoid repeated freezing and thawing.

MSDS:  [Download](#)

Applications

Western Blot

Gene Information

Entrez GeneID: [586](#)

GeneBank [BC033864](#)
Accession#:

Protein [AAH33864](#)
Accession#:

Gene Name: BCAT1

Gene Alias: BCT1,DKFZp686E12175,ECA39,MECA39,PNAS-121,PP18

Gene Description: branched chain aminotransferase 1, cytosolic

Omim ID: [113520](#)

Gene Ontology: [Hyperlink](#)

Gene Summary: This gene encodes the cytosolic form of the enzyme branched-chain amino acid transaminase. This enzyme catalyzes the reversible transamination of branched-chain alpha-keto acids to branched-chain L-amino acids essential for cell growth. Two different clinical disorders have been attributed to a defect of branched-chain amino acid transamination: hypervalinemia and hyperleucine-isoleucinemia. As there is also a gene encoding a mitochondrial form of this enzyme, mutations in either gene may contribute to these disorders. [provided by RefSeq]

Other Designations: branched-chain-amino-acid aminotransferase, cytosolic,placental protein 18

Gene Pathway

[Biosynthesis of alkaloids derived from histidine and purine](#)
[Biosynthesis of alkaloids derived from shikimate pathway](#) [Metabolic pathways](#)
[Pantothenate and CoA biosynthesis](#) [Valine, leucine and isoleucine biosynthesis](#)
[Valine, leucine and isoleucine degradation](#)

Related Disease

[Cardiovascular Diseases](#) [Diabetes Mellitus, Type 2](#) [Edema](#)
[Genetic Predisposition to Disease](#) [Obesity](#) [Ovarian Failure](#), [Premature Overweight](#)
[Polycystic Ovary Syndrome](#) [Puberty, Delayed](#) [Puberty, Precocious](#) [Thrombophilia](#)
[Tobacco Use Disorder](#)

[服務條款](#) | [隱私權政策](#) | [著作及商標](#) | [網站地圖](#)

©2016 亞諾法生技股份有限公司 Abnova Corporation. 版權所有.