



SZABO SCANDIC

Part of Europa Biosite

Produktinformation



Forschungsprodukte & Biochemikalien



Zellkultur & Verbrauchsmaterial



Diagnostik & molekulare Diagnostik



Laborgeräte & Service

Weitere Information auf den folgenden Seiten!
See the following pages for more information!



Lieferung & Zahlungsart

siehe unsere [Liefer- und Versandbedingungen](#)

Zuschläge

- Mindermengenzuschlag
- Trockeneiszuschlag
- Gefahrgutzuschlag
- Expressversand

SZABO-SCANDIC HandelsgmbH

Quellenstraße 110, A-1100 Wien

T. +43(0)1 489 3961-0

F. +43(0)1 489 3961-7

mail@szabo-scandic.com

www.szabo-scandic.com

[linkedin.com/company/szaboscandic](https://www.linkedin.com/company/szaboscandic) 

BCKDHA polyclonal antibody (A01)

Catalog # : H00000593-A01

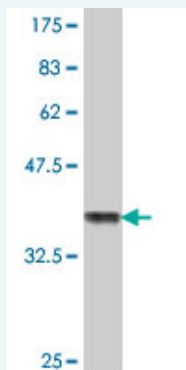
規格 : [50 uL]

List All

Specification

Product Description:	Mouse polyclonal antibody raised against a partial recombinant BCKDHA.
Immunogen:	BCKDHA (NP_000700, 347 a.a. ~ 445 a.a) partial recombinant protein with GST tag.
Sequence:	SVDEVNYWDKQDHPISRLRHYYLLSQGWWDDEEQEKAWRKQSRRKVM FEQAERKPKPNPNULLFSDVYQEMPAQLRKQQESLARHLQTYGEHYPLD HFDK
Host:	Mouse
Reactivity:	Human

Quality Control Testing: Antibody Reactive Against Recombinant Protein.



Western Blot detection against Immunogen (37 KDa) .

Storage Buffer: 50 % glycerol

Storage Instruction: Store at -20°C or lower. Aliquot to avoid repeated freezing and thawing.

MSDS: [Download](#)

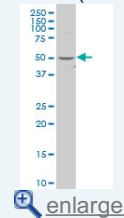
Datasheet: [Download](#)

Applications

Western Blot (Cell lysate)

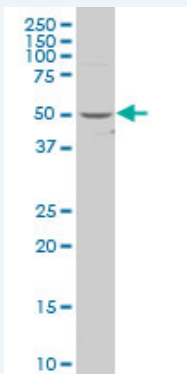
Application Image

Western Blot (Cell lysate)



Western Blot (Recombinant protein)

ELISA



BCKDHA polyclonal antibody (A01), Lot # 051212JC01 Western Blot analysis of BCKDHA expression in Y-79 (Cat # L042V1).

 [Protocol Download](#)

Western Blot (Recombinant protein)

 [Protocol Download](#)

ELISA

Gene Information

Entrez GeneID: [593](#)

GeneBank [NM_000709](#)

Accession#:

Protein [NP_000700](#)

Accession#:

Gene Name: BCKDHA

Gene Alias: BCKDE1A,FLJ45695,MSU,MSUD1,OVD1A

Gene Description: branched chain keto acid dehydrogenase E1, alpha polypeptide

Omim ID: [248600](#), [608348](#)

Gene Ontology: [Hyperlink](#)

Gene Summary: The branched-chain alpha-keto acid (BCAA) dehydrogenase (BCKD) complex is an inner mitochondrial enzyme complex that catalyzes the second major step in the catabolism of the branched-chain amino acids leucine, isoleucine, and valine. The BCKD complex consists of three catalytic components: a heterotetrameric (alpha2-beta2) branched-chain alpha-keto acid decarboxylase (E1), a dihydrolipoyl transacylase (E2), and a dihydrolipoamide dehydrogenase (E3). This gene encodes the alpha subunit of the decarboxylase (E1) component. Mutations in this gene result in maple syrup urine disease, type IA. Multiple transcript variants encoding different isoforms have been found for this gene

Other Designations: 2-oxoisovalerate dehydrogenase (lipoamide), branched-chain alpha-keto acid dehydrogenase complex E1 alpha subunit, maple syrup urine disease

Gene Pathway

[Metabolic pathways Valine, leucine and isoleucine degradation](#)

Related Disease

[Maple Syrup Urine Disease](#)

