



# SZABO SCANDIC

Part of Europa Biosite

## Produktinformation



Forschungsprodukte & Biochemikalien



Zellkultur & Verbrauchsmaterial



Diagnostik & molekulare Diagnostik



Laborgeräte & Service

Weitere Information auf den folgenden Seiten!  
See the following pages for more information!



### Lieferung & Zahlungsart

siehe unsere [Liefer- und Versandbedingungen](#)

### Zuschläge

- Mindermengenzuschlag
- Trockeneiszuschlag
- Gefahrgutzuschlag
- Expressversand

### SZABO-SCANDIC HandelsgmbH

Quellenstraße 110, A-1100 Wien

T. +43(0)1 489 3961-0

F. +43(0)1 489 3961-7

[mail@szabo-scandic.com](mailto:mail@szabo-scandic.com)

[www.szabo-scandic.com](http://www.szabo-scandic.com)

[linkedin.com/company/szaboscandic](https://www.linkedin.com/company/szaboscandic) 

**CCND1 purified MaxPab mouse polyclonal antibody (B01P)** MaxPab®

Catalog # : H00000595-B01P

規格 : [ 50 ug ]

List All

**Specification**

**Product Description:** Mouse polyclonal antibody raised against a full-length human CCND1 protein.

**Immunogen:** CCND1 (AAH01501, 1 a.a. ~ 295 a.a) full-length human protein.

**Sequence:** MEHQLLCCEVETIRRAYPDANLLNDRVLRAMLKAEETCAPSVSYFKCVQ KEVLPMSMRKIVATWMLLEVCEEQCEEEVFPLAMNYLDRFLSLEPVKKSRLQLLGATCMFVASKMKETIPLTAGKLCIYTDNSIRPEELLQMELLVNKLNLAAMTPHDFIEHFLSKMPEAEENKQIIRKHAQTFVALCATDVKFI SNPP SMVAAGSVVAAVQGLNLRSPNLFSLYYRLTRFLSRVIKCDPDCLRACQE QIEALLESSLRQAQQNMDPKAAEEEEEEEEEEVDLACTPTDVRDVI

**Host:** Mouse

**Reactivity:** Human

**Quality Control Testing:** Antibody reactive against mammalian transfected lysate.

**Storage Buffer:** In 1x PBS, pH 7.4

**Storage Instruction:** Store at -20°C or lower. Aliquot to avoid repeated freezing and thawing.

**MSDS:**  [Download](#)

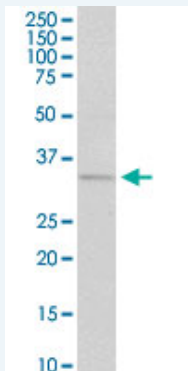
**Datasheet:**  [Download](#)

**Publication Reference**

1. Spontaneous Peripheral T-cell Responses toward the Tumor-Associated Antigen Cyclin D1 in Patients with Clear Cell Renal Cell Carcinoma.  
Dannenmann SR, Hermanns T, Bransi A, Matter C, von Boehmer L, Stevanovic S, Schraml P, Moch H, Knuth A, van den Broek M. *Cancer Immunol Res* doi:10.1158/2326-6066.CIR-13-0113

**Applications**

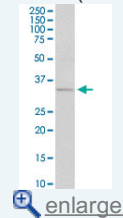
**Western Blot (Cell lysate)**



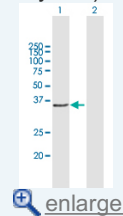
CCND1 MaxPab polyclonal antibody. Western Blot analysis of CCND1 expression in MCF-7.

**Application Image**

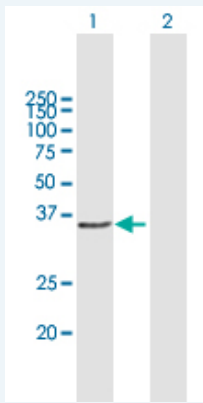
**Western Blot (Cell lysate)**



**Western Blot (Transfected lysate)**



**Western Blot (Transfected lysate)**



Western Blot analysis of CCND1 expression in transfected 293T cell line ([H00000595-T01](#)) by CCND1 MaxPab polyclonal antibody.

Lane 1: CCND1 transfected lysate(32.56 KDa).  
Lane 2: Non-transfected lysate.

**Gene Information**

**Entrez GeneID:** [595](#)

**GeneBank Accession#:** [BC001501](#)

**Protein Accession#:** [AAH01501](#)

**Gene Name:** CCND1

**Gene Alias:** BCL1,D11S287E,PRAD1,U21B31

**Gene Description:** cyclin D1

**Omim ID:** [151400](#), [168461](#), [193300](#), [254500](#)

**Gene Ontology:** [Hyperlink](#)

**Gene Summary:** The protein encoded by this gene belongs to the highly conserved cyclin family, whose members are characterized by a dramatic periodicity in protein abundance throughout the cell cycle. Cyclins function as regulators of CDK kinases. Different cyclins exhibit distinct expression and degradation patterns which contribute to the temporal coordination of each mitotic event. This cyclin forms a complex with and functions as a regulatory subunit of CDK4 or CDK6, whose activity is required for cell cycle G1/S transition. This protein has been shown to interact with tumor suppressor protein Rb and the expression of this gene is regulated positively by Rb. Mutations, amplification and overexpression of this gene, which alters cell cycle progression, are observed frequently in a variety of tumors and may contribute to tumorigenesis. [provided by RefSeq]

**Other Designations:** B-cell CLL/lymphoma 1,G1/S-specific cyclin D1

**Gene Pathway**

[Acute myeloid leukemia](#) [Bladder cancer](#) [Cell cycle](#) [Chronic myeloid leukemia](#) [Colorectal cancer](#) [Endometrial cancer](#) [Focal adhesion](#) [Glioma](#) [Jak-STAT signaling pathway](#) [Melanoma](#) [Non-small cell lung cancer](#) [p53 signaling pathway](#) [Pancreatic cancer](#)

[Pathways in cancer](#) [Prostate cancer](#) [Small cell lung cancer](#) [Thyroid cancer](#)  
[Wnt signaling pathway](#)

#### **Related Disease**

---

[Adenocarcinoma](#) [Adenocarcinoma, Mucinous](#) [Adenoma](#) [Ataxia telangiectasia](#)  
[Barrett Esophagus](#) [Brain Neoplasms](#) [Breast cancer](#) [Breast Neoplasms](#)  
[Breast Neoplasms, Male](#) [Carcinoma](#) [Carcinoma in Situ](#) [Carcinoma, Basal Cell](#)  
[Carcinoma, Hepatocellular](#) [Carcinoma, Non-Small-Cell Lung](#) [Carcinoma, Renal Cell](#)  
[Carcinoma, Squamous Cell](#) [Carcinoma, Transitional Cell](#) [Cell Transformation, Neoplastic](#)  
[Cell Transformation, Viral](#)

**... see more**

---

[服務條款](#) | [隱私權政策](#) | [著作及商標](#) | [網站地圖](#)

©2016 亞諾法生技股份有限公司 Abnova Corporation. 版權所有.