



SZABO SCANDIC

Part of Europa Biosite

Produktinformation



Forschungsprodukte & Biochemikalien



Zellkultur & Verbrauchsmaterial



Diagnostik & molekulare Diagnostik



Laborgeräte & Service

Weitere Information auf den folgenden Seiten!
See the following pages for more information!



Lieferung & Zahlungsart

siehe unsere [Liefer- und Versandbedingungen](#)

Zuschläge

- Mindermengenzuschlag
- Trockeneiszuschlag
- Gefahrgutzuschlag
- Expressversand

SZABO-SCANDIC HandelsgmbH

Quellenstraße 110, A-1100 Wien

T. +43(0)1 489 3961-0

F. +43(0)1 489 3961-7

mail@szabo-scandic.com

www.szabo-scandic.com

[linkedin.com/company/szaboscandic](https://www.linkedin.com/company/szaboscandic) 

CCND1 purified MaxPab mouse polyclonal antibody (B02P) MaxPab®

Catalog # : H00000595-B02P

規格 : [50 ug]

[List All](#)

Specification

Product Description: Mouse polyclonal antibody raised against a full-length human CCND1 protein.

Immunogen: CCND1 (AAH23620.1, 1 a.a. ~ 295 a.a) full-length human protein.

Sequence:
 MEHQLLCCEVETIRRAYPDANLLNDRVLRAMLKAEETCAPSVSYFKCVQ
 KEVLPMSRKIVATWMLEVCEEQKCEEEVFPLAMNYLDRFLSLEPVKKS
 R LQLLGATCMFVASKMKETIPLTAEKLCIYTDNSIRPEELLQMELLV
 NKLK WNLAAAMTPHDFIEHFLSKMPEAEENKQIIRKHAQTFVALCATD
 VKFISNPP SMVAAGSVVAAVQGLNLRSPNFLSYRRLTRFLSRVIKCD
 PDCLRACQE QIEALLESSLRQAQQNMDPKAAEEEEEEEEVLDLACTPTD
 VRDVI

Host: Mouse

Reactivity: Human

Quality Control Testing: Antibody reactive against mammalian transfected lysate.

Storage Buffer: In 1x PBS, pH 7.4

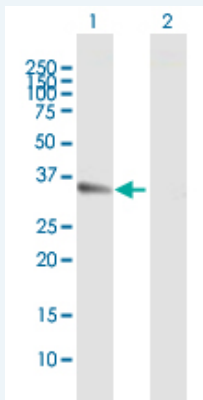
Storage Instruction: Store at -20°C or lower. Aliquot to avoid repeated freezing and thawing.

MSDS: [Download](#)

Datasheet: [Download](#)

Applications

Western Blot (Transfected lysate)



Western Blot analysis of CCND1 expression in transfected 293T cell line (H00000595-T03) by CCND1 MaxPab polyclonal antibody.

Lane 1: CCND1 transfected lysate(33.70 KDa).

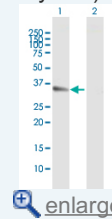
Lane 2: Non-transfected lysate.

[Protocol Download](#)

Immunofluorescence

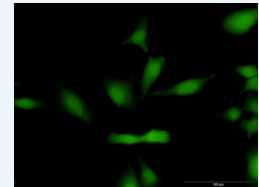
Application Image

Western Blot (Transfected lysate)



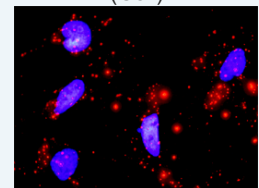
[enlarge](#)

Immunofluorescence

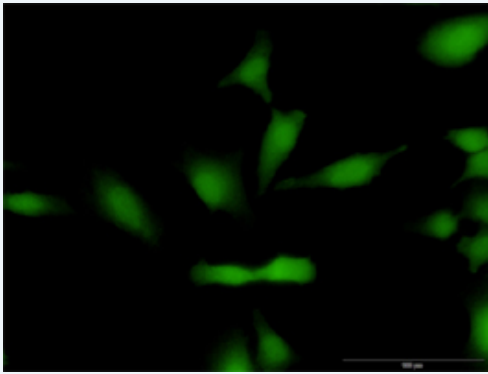


[enlarge](#)

In situ Proximity Ligation Assay (Cell)




[enlarge](#)

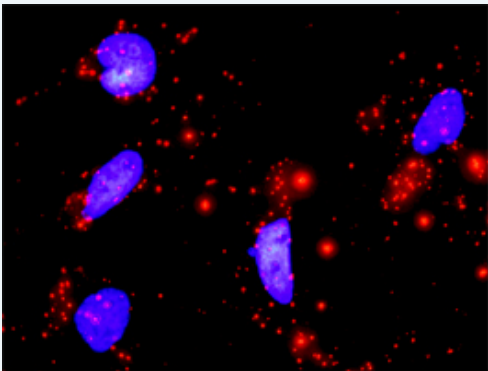


[enlarge this image](#)

Immunofluorescence of purified MaxPab antibody to CCND1 on HeLa cell. [antibody concentration 30 ug/ml]

 [Protocol Download](#)

***In situ* Proximity Ligation Assay (Cell)**



Proximity Ligation Analysis of protein-protein interactions between CDK4 and CCND1. HeLa cells were stained with anti-CDK4 rabbit purified polyclonal 1:1200 and anti-CCND1 mouse purified polyclonal antibody 1:50. Each red dot represents the detection of protein-protein interaction complex, and nuclei were counterstained with DAPI (blue).

Gene Information

Entrez GeneID: [595](#)

GeneBank [NM_053056](#)

Accession#:

Protein [AAH23620.1](#)

Accession#:

Gene Name: CCND1

Gene Alias: BCL1,D11S287E,PRAD1,U21B31

Gene cyclin D1

Description:

Omim ID: [151400](#), [168461](#), [193300](#), [254500](#)

Gene Ontology: [Hyperlink](#)

Gene Summary: The protein encoded by this gene belongs to the highly conserved cyclin family, whose members are characterized by a dramatic periodicity in protein abundance throughout the cell cycle. Cyclins function as regulators of CDK kinases. Different cyclins exhibit distinct expression and degradation patterns which contribute to the temporal coordination of each mitotic event. This cyclin forms a complex with and functions as a regulatory subunit of CDK4 or CDK6, whose activity is required for cell cycle G1/S transition. This protein has been shown to interact with tumor suppressor protein Rb and the expression of this gene is regulated positively by Rb. Mutations, amplification and overexpression of this gene, which alters cell cycle progression, are

observed frequently in a variety of tumors and may contribute to tumorigenesis. [provided by RefSeq]

Other Designations: B-cell CLL/lymphoma 1,G1/S-specific cyclin D1

Gene Pathway

[Acute myeloid leukemia](#) [Bladder cancer](#) [Cell cycle](#) [Chronic myeloid leukemia](#) [Colorectal cancer](#) [Endometrial cancer](#) [Focal adhesion](#) [Glioma](#) [Jak-STAT signaling pathway](#) [Melanoma](#) [Non-small cell lung cancer](#) [p53 signaling pathway](#) [Pancreatic cancer](#) [Pathways in cancer](#) [Prostate cancer](#) [Small cell lung cancer](#) [Thyroid cancer](#) [Wnt signaling pathway](#)

Related Disease

[Adenocarcinoma](#) [Adenocarcinoma, Mucinous](#) [Adenoma](#) [Ataxia telangiectasia](#) [Barrett Esophagus](#) [Brain Neoplasms](#) [Breast cancer](#) [Breast Neoplasms](#) [Breast Neoplasms, Male](#) [Carcinoma](#) [Carcinoma in Situ](#) [Carcinoma, Basal Cell](#) [Carcinoma, Hepatocellular](#) [Carcinoma, Non-Small-Cell Lung](#) [Carcinoma, Renal Cell](#) [Carcinoma, Squamous Cell](#) [Carcinoma, Transitional Cell](#) [Cell Transformation, Neoplastic](#) [Cell Transformation, Viral](#)

... see more

[服務條款](#) | [隱私權政策](#) | [著作及商標](#) | [網站地圖](#)

©2016 亞諾法生技股份有限公司 Abnova Corporation. 版權所有.