



SZABO SCANDIC

Part of Europa Biosite

Produktinformation



Forschungsprodukte & Biochemikalien



Zellkultur & Verbrauchsmaterial



Diagnostik & molekulare Diagnostik



Laborgeräte & Service

Weitere Information auf den folgenden Seiten!
See the following pages for more information!



Lieferung & Zahlungsart

siehe unsere [Liefer- und Versandbedingungen](#)

Zuschläge

- Mindermengenzuschlag
- Trockeneiszuschlag
- Gefahrgutzuschlag
- Expressversand

SZABO-SCANDIC HandelsgmbH

Quellenstraße 110, A-1100 Wien

T. +43(0)1 489 3961-0

F. +43(0)1 489 3961-7

mail@szabo-scandic.com

www.szabo-scandic.com

[linkedin.com/company/szaboscandic](https://www.linkedin.com/company/szaboscandic) 

CCND1 293T Cell Transient Overexpression Lysate(Denatured)

Catalog # : H00000595-T03

規格 : [100 uL]

[List All](#)

Specification

Transfected Cell Line: 293T

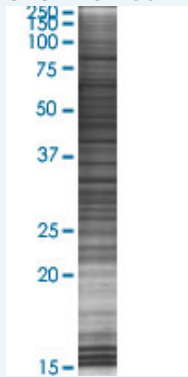
Plasmid: pCMV-CCND1 full-length

Host: Human

Theoretical MW (kDa): 33.7

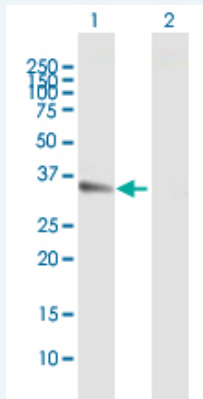
Quality Control Testing: Transient overexpression cell lysate was tested with Anti-CCND1 antibody ([H00000595-B02P](#)) by Western Blots.

SDS-PAGE Gel



CCND1 transfected lysate.

Western Blot



Lane 1: CCND1 transfected lysate (33.7 KDa)

Lane 2: Non-transfected lysate.

Storage Buffer: 1X Sample Buffer (50 mM Tris-HCl, 2% SDS, 10% glycerol, 300 mM 2-mercaptoethanol, 0.01% Bromophenol blue)

Storage Instruction: Store at -80°C. Aliquot to avoid repeated freezing and thawing.

MSDS:  [Download](#)

Applications

Western Blot

Gene Information

Entrez GeneID: [595](#)

GeneBank [NM_053056](#)
Accession#:

Protein [AAH23620.1](#)
Accession#:

Gene Name: CCND1

Gene Alias: BCL1,D11S287E,PRAD1,U21B31

Gene [cyclin D1](#)
Description:

Omim ID: [151400](#), [168461](#), [193300](#), [254500](#)

Gene Ontology: [Hyperlink](#)

Gene Summary: The protein encoded by this gene belongs to the highly conserved cyclin family, whose members are characterized by a dramatic periodicity in protein abundance throughout the cell cycle. Cyclins function as regulators of CDK kinases. Different cyclins exhibit distinct expression and degradation patterns which contribute to the temporal coordination of each mitotic event. This cyclin forms a complex with and functions as a regulatory subunit of CDK4 or CDK6, whose activity is required for cell cycle G1/S transition. This protein has been shown to interact with tumor suppressor protein Rb and the expression of this gene is regulated positively by Rb. Mutations, amplification and overexpression of this gene, which alters cell cycle progression, are observed frequently in a variety of tumors and may contribute to tumorigenesis. [provided by RefSeq]

Other [B-cell CLL/lymphoma 1,G1/S-specific cyclin D1](#)
Designations:

Gene Pathway

[Acute myeloid leukemia](#) [Bladder cancer](#) [Cell cycle](#) [Chronic myeloid leukemia](#)
[Colorectal cancer](#) [Endometrial cancer](#) [Focal adhesion](#) [Glioma](#) [Jak-STAT signaling pathway](#)
[Melanoma](#) [Non-small cell lung cancer](#) [p53 signaling pathway](#) [Pancreatic cancer](#)
[Pathways in cancer](#) [Prostate cancer](#) [Small cell lung cancer](#) [Thyroid cancer](#)
[Wnt signaling pathway](#)

Related Disease

[Adenocarcinoma](#) [Adenocarcinoma, Mucinous](#) [Adenoma](#) [Ataxia telangiectasia](#)
[Barrett Esophagus](#) [Brain Neoplasms](#) [Breast cancer](#) [Breast Neoplasms](#)
[Breast Neoplasms, Male](#) [Carcinoma](#) [Carcinoma in Situ](#) [Carcinoma, Basal Cell](#)
[Carcinoma, Hepatocellular](#) [Carcinoma, Non-Small-Cell Lung](#) [Carcinoma, Renal Cell](#)
[Carcinoma, Squamous Cell](#) [Carcinoma, Transitional Cell](#) [Cell Transformation, Neoplastic](#)
[Cell Transformation, Viral](#)

... see more