



SZABO SCANDIC

Part of Europa Biosite

Produktinformation



Forschungsprodukte & Biochemikalien



Zellkultur & Verbrauchsmaterial



Diagnostik & molekulare Diagnostik



Laborgeräte & Service

Weitere Information auf den folgenden Seiten!
See the following pages for more information!



Lieferung & Zahlungsart

siehe unsere [Liefer- und Versandbedingungen](#)

Zuschläge

- Mindermengenzuschlag
- Trockeneiszuschlag
- Gefahrgutzuschlag
- Expressversand

SZABO-SCANDIC HandelsgmbH

Quellenstraße 110, A-1100 Wien

T. +43(0)1 489 3961-0

F. +43(0)1 489 3961-7

mail@szabo-scandic.com

www.szabo-scandic.com

[linkedin.com/company/szaboscandic](https://www.linkedin.com/company/szaboscandic) 



BCL2L1 purified MaxPab rabbit polyclonal antibody (D01P) MaxPab®

Catalog # : H00000598-D01P

規格 : [100 ug]

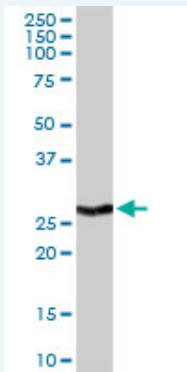
[List All](#)

Specification

Product Description:	Rabbit polyclonal antibody raised against a full-length human BCL2L1 protein.
Immunogen:	BCL2L1 (NP_612815.1, 1 a.a. ~ 233 a.a) full-length human protein.
Sequence:	MSQSNRELVDFLSYKLSQKGYWSQFSDVEENRTEAPEGTESEMETP SAINGNPSWHLADSPAINGATGHSSLDAREVIPMAAVKQALREAGDEF ELRYRRAFSDL TSQLHITPGTAYQSFEQVWVNELFRDGVNWGRIVAFFSF GGALCVESVDKEMQVLVSRIAAMWATYLNHLEPWIQENGGWDTFVEL YGNNAAAESRKGQERFNRFWFLTGMTVAGVVLLGSLFSRK
Host:	Rabbit
Reactivity:	Human
Quality Control Testing:	Antibody reactive against mammalian transfected lysate.
Storage Buffer:	In 1x PBS, pH 7.4
Storage Instruction:	Store at -20°C or lower. Aliquot to avoid repeated freezing and thawing.
MSDS:	 Download
Datasheet:	 Download

Applications

Western Blot (Tissue lysate)



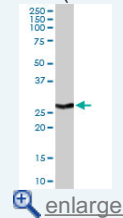
BCL2L1 MaxPab rabbit polyclonal antibody. Western Blot analysis of BCL2L1 expression in human spleen.

 [Protocol Download](#)

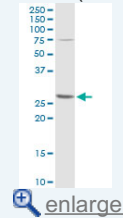
Western Blot (Cell lysate)

Application Image

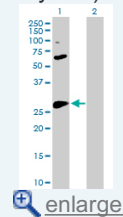
Western Blot (Tissue lysate)



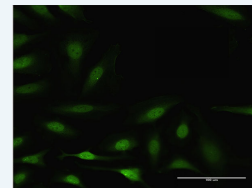
Western Blot (Cell lysate)



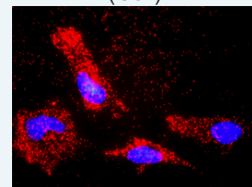
Western Blot (Transfected lysate)

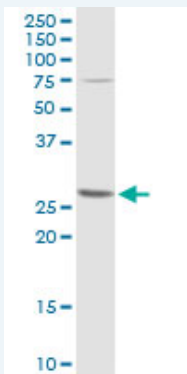


Immunofluorescence



In situ Proximity Ligation Assay (Cell)

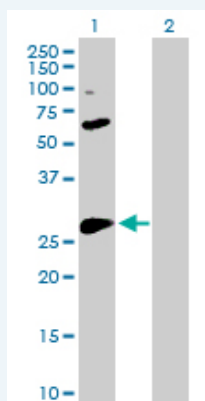




BCL2L1 MaxPab rabbit polyclonal antibody. Western Blot analysis of BCL2L1 expression in A-431.

[Protocol Download](#)

Western Blot (Transfected lysate)



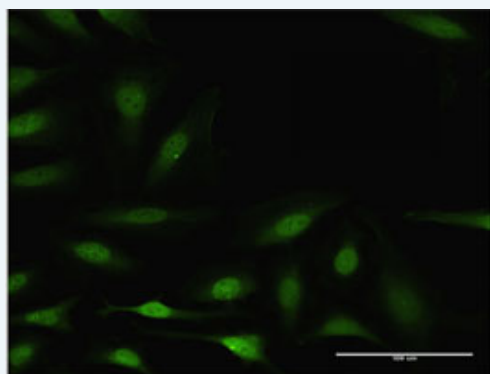
Western Blot analysis of BCL2L1 expression in transfected 293T cell line ([H00000598-T01](#)) by BCL2L1 MaxPab polyclonal antibody.

Lane 1: BCL2L1 transfected lysate(26.00 KDa).

Lane 2: Non-transfected lysate.

[Protocol Download](#)

Immunofluorescence

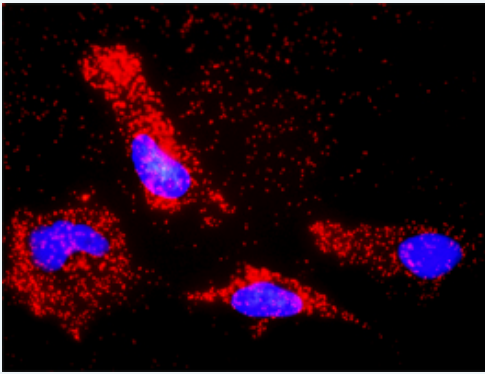


[enlarge this image](#)

Immunofluorescence of purified MaxPab antibody to BCL2L1 on HeLa cell. [antibody concentration 10 ug/ml]

[Protocol Download](#)

In situ Proximity Ligation Assay (Cell)



Proximity Ligation Analysis of protein-protein interactions between BCL2L1 and BAX. HeLa cells were stained with anti-BCL2L1 rabbit purified polyclonal 1:1200 and anti-BAX mouse monoclonal antibody 1:50. Each red dot represents the detection of protein-protein interaction complex, and nuclei were counterstained with DAPI (blue).

Gene Information

Entrez GeneID: [598](#)

**GeneBank
Accession#:** [NM_138578](#)

**Protein
Accession#:** [NP_612815.1](#)

Gene Name: BCL2L1

Gene Alias: BCL-XL/S,BCL2L,BCLX,Bcl-X,DKFZp781P2092,bcl-xL,bcl-xS

**Gene
Description:** BCL2-like 1

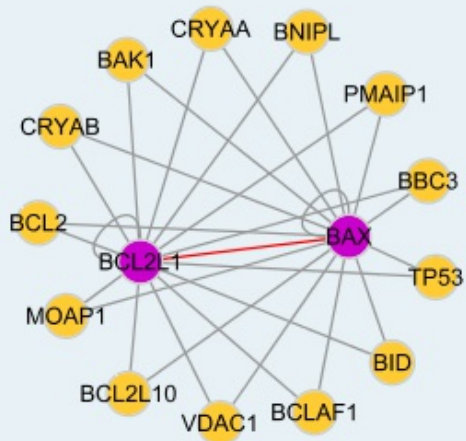
Omim ID: [600039](#)

Gene Ontology: [Hyperlink](#)

Gene Summary: The protein encoded by this gene belongs to the BCL-2 protein family. BCL-2 family members form hetero- or homodimers and act as anti- or pro-apoptotic regulators that are involved in a wide variety of cellular activities. The proteins encoded by this gene are located at the outer mitochondrial membrane, and have been shown to regulate outer mitochondrial membrane channel (VDAC) opening. VDAC regulates mitochondrial membrane potential, and thus controls the production of reactive oxygen species and release of cytochrome C by mitochondria, both of which are the potent inducers of cell apoptosis. Two alternatively spliced transcript variants, which encode distinct isoforms, have been reported. The longer isoform acts as an apoptotic inhibitor and the shorter form acts as an apoptotic activator. [provided by RefSeq]

**Other
Designations:** OTTHUMP00000030550,OTTHUMP00000030551,OTTHUMP00000030553

Interactome



Gene Pathway

[Amyotrophic lateral sclerosis \(ALS\)](#) [Apoptosis](#) [Chronic myeloid leukemia](#)
[Jak-STAT signaling pathway](#) [Pancreatic cancer](#) [Pathways in cancer](#) [Small cell lung cancer](#)

Related Disease

[Adenocarcinoma](#) [Alzheimer Disease](#) [Amnesia](#) [Cognition Disorders](#) [Colorectal Neoplasms](#)
[Disease Progression](#) [Esophageal Neoplasms](#) [Genetic Predisposition to Disease](#)
[Hematologic Diseases](#) [Hodgkin Disease](#) [Lymphoma, B-Cell](#) [Lymphoma, Follicular](#)
[Lymphoma, Large B-Cell, Diffuse](#) [Lymphoma, Non-Hodgkin](#) [Lymphoproliferative Disorders](#)
[Multiple Sclerosis](#) [Neoplasm Metastasis](#) [Neuropsychological Tests](#) [Occupational Diseases](#)

... see more

[服務條款](#) | [隱私權政策](#) | [著作及商標](#) | [網站地圖](#)

©2016 亞諾法生技股份有限公司 Abnova Corporation. 版權所有.