



SZABO SCANDIC

Part of Europa Biosite

Produktinformation



Forschungsprodukte & Biochemikalien



Zellkultur & Verbrauchsmaterial



Diagnostik & molekulare Diagnostik



Laborgeräte & Service

Weitere Information auf den folgenden Seiten!
See the following pages for more information!



Lieferung & Zahlungsart

siehe unsere [Liefer- und Versandbedingungen](#)

Zuschläge

- Mindermengenzuschlag
- Trockeneiszuschlag
- Gefahrgutzuschlag
- Expressversand

SZABO-SCANDIC HandelsgmbH

Quellenstraße 110, A-1100 Wien

T. +43(0)1 489 3961-0

F. +43(0)1 489 3961-7

mail@szabo-scandic.com

www.szabo-scandic.com

[linkedin.com/company/szaboscandic](https://www.linkedin.com/company/szaboscandic) 

BCL2L1 monoclonal antibody (M01), clone 3E2-2A5

Catalog # : H00000598-M01

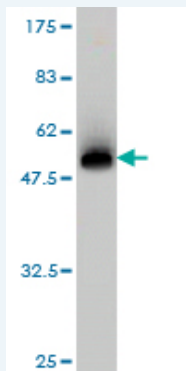
規格 : [100 ug]

[List All](#)

Specification

Product Description:	Mouse monoclonal antibody raised against a full length recombinant BCL2L1.
Immunogen:	BCL2L1 (AAH19307, 1 a.a. ~ 233 a.a) full-length recombinant protein with GST tag. MW of the GST tag alone is 26 KDa.
Sequence:	MSQSNRELWDFLSYKLSQKGYWSWSQFSDVEENRTEAPEGTESEMETP SAINGNPSWHLADSPAVNGATGHSSSLDAREVIPMAAVKQALREAGDEF ELRYRRAFSDLTSQLHITPGTAYQSFEQVVNELFRDGVNWGRVAFFSF GGALCVESVDKEMQVLVSRIAAWMATYLNHLEPWIQENGGWDTFVEL YGNAAAESRKGQERFNWFLTGMTVAGVLLGSLFSRK
Host:	Mouse
Reactivity:	Human
Isotype:	IgG1 Kappa

Quality Control Testing: Antibody Reactive Against Recombinant Protein.



Western Blot detection against Immunogen (51.37 KDa) .

Storage Buffer: In 1x PBS, pH 7.4

Storage Instruction: Store at -20°C or lower. Aliquot to avoid repeated freezing and thawing.

MSDS: [Download](#)

Datasheet: [Download](#)

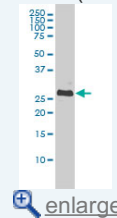
Publication Reference

1. A BACH2-BCL2L1 fusion gene resulting from a t(6; 20)(q15; q11. 2) chromosomal translocation in the lymphoma cell line BLUE-1. Turkmen S, Riehn M, Klopocki E, Molkentin M, Reinhardt R, Burmeister T. Genes Chromosomes Cancer. 2011 Jun;50(6):389-96. doi: 10.1002/gcc.20863. Epub 2011 Mar 15.

Applications

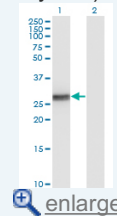
Application Image

Western Blot (Cell lysate)



[enlarge](#)

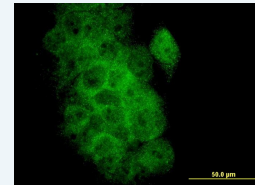
Western Blot (Transfected lysate)



[enlarge](#)

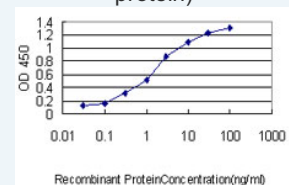
Western Blot (Recombinant protein)

Immunofluorescence



[enlarge](#)

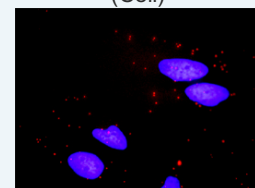
Sandwich ELISA (Recombinant protein)



[enlarge](#)

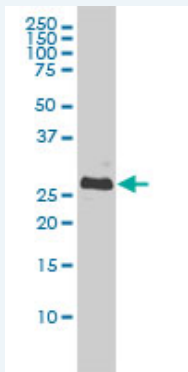
ELISA

In situ Proximity Ligation Assay (Cell)




[enlarge](#)

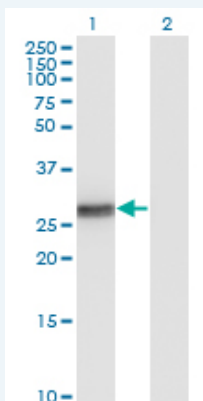
Western Blot (Cell lysate)



BCL2L1 monoclonal antibody (M01), clone 3E2-2A5 Western Blot analysis of BCL2L1 expression in A-431 (Cat # L015V1).

 [Protocol Download](#)

Western Blot (Transfected lysate)




Western Blot analysis of BCL2L1 expression in transfected 293T cell line by BCL2L1 monoclonal antibody (M01), clone 3E2-2A5.

Lane 1: BCL2L1 transfected lysate (Predicted MW: 26 KDa).

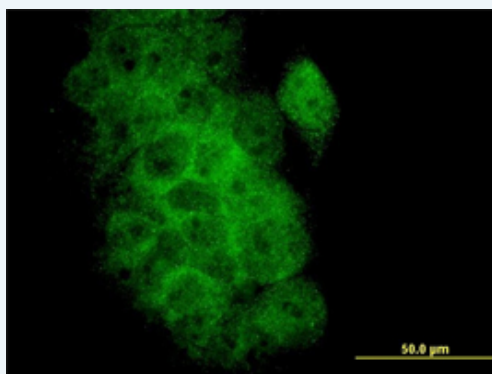
Lane 2: Non-transfected lysate.


 [Protocol Download](#)

Western Blot (Recombinant protein)


 [Protocol Download](#)

Immunofluorescence

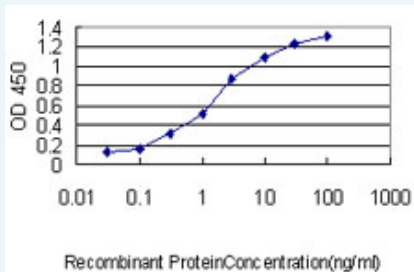


 [enlarge this image](#)

Immunofluorescence of monoclonal antibody to BCL2L1 on A-431 cell. [antibody concentration 10 ug/ml]

 [Protocol Download](#)

Sandwich ELISA (Recombinant protein)

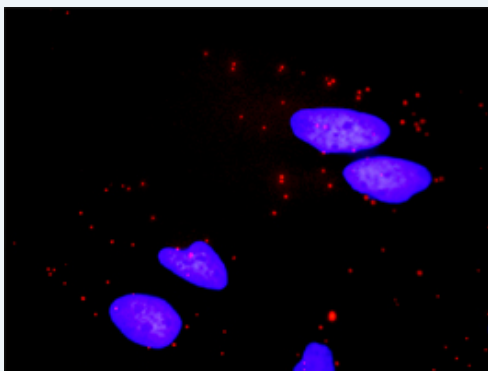


Detection limit for recombinant GST tagged BCL2L1 is approximately 0.03ng/ml as a capture antibody.

 [Protocol Download](#)

ELISA

In situ Proximity Ligation Assay (Cell)



Proximity Ligation Analysis of protein-protein interactions between BID and BCL2L1. HeLa cells were stained with anti-BID rabbit purified polyclonal 1:1200 and anti-BCL2L1 mouse monoclonal antibody 1:50. Each red dot represents the detection of protein-protein interaction complex, and nuclei were counterstained with DAPI (blue).

Gene Information

Entrez GeneID: [598](#)

GeneBank [BC019307](#)
Accession#:

Protein [AAH19307](#)
Accession#:

Gene Name: BCL2L1

Gene Alias: BCL-XL/S,BCL2L,BCLX,Bcl-X,DKFZp781P2092,bcl-xL,bcl-xS

Gene BCL2-like 1
Description:

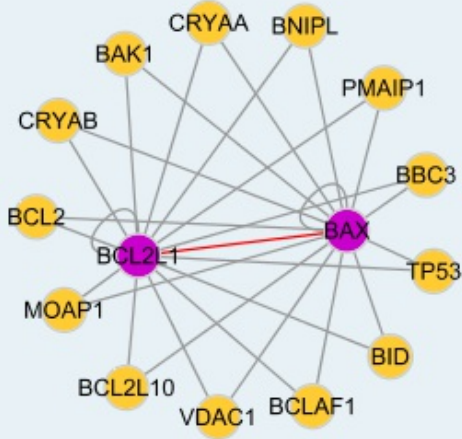
Omim ID: [600039](#)

Gene Ontology: [Hyperlink](#)

Gene Summary: The protein encoded by this gene belongs to the BCL-2 protein family. BCL-2 family members form hetero- or homodimers and act as anti- or pro-apoptotic regulators that are involved in a wide variety of cellular activities. The proteins encoded by this gene are located at the outer mitochondrial membrane, and have been shown to regulate outer mitochondrial membrane channel (VDAC) opening. VDAC regulates mitochondrial membrane potential, and thus controls the production of reactive oxygen species and release of cytochrome C by mitochondria, both of which are the potent inducers of cell apoptosis. Two alternatively spliced transcript variants, which encode distinct isoforms, have been reported. The longer isoform acts as an apoptotic inhibitor and the shorter form acts as an apoptotic activator. [provided by RefSeq

Other OTTHUMP00000030550,OTTHUMP00000030551,OTTHUMP00000030
Designations: 553

Interactome



Gene Pathway

[Amyotrophic lateral sclerosis \(ALS\)](#) [Apoptosis](#) [Chronic myeloid leukemia](#)
[Jak-STAT signaling pathway](#) [Pancreatic cancer](#) [Pathways in cancer](#) [Small cell lung cancer](#)

Related Disease

[Adenocarcinoma](#) [Alzheimer Disease](#) [Amnesia](#) [Cognition Disorders](#) [Colorectal Neoplasms](#)
[Disease Progression](#) [Esophageal Neoplasms](#) [Genetic Predisposition to Disease](#)
[Hematologic Diseases](#) [Hodgkin Disease](#) [Lymphoma, B-Cell](#) [Lymphoma, Follicular](#)
[Lymphoma, Large B-Cell, Diffuse](#) [Lymphoma, Non-Hodgkin](#) [Lymphoproliferative Disorders](#)
[Multiple Sclerosis](#) [Neoplasm Metastasis](#) [Neuropsychological Tests](#) [Occupational Diseases](#)

... see more

[服務條款](#) | [隱私權政策](#) | [著作及商標](#) | [網站地圖](#)

©2016 亞諾法生技股份有限公司 Abnova Corporation. 版權所有.