



SZABO SCANDIC

Part of Europa Biosite

Produktinformation



Forschungsprodukte & Biochemikalien



Zellkultur & Verbrauchsmaterial



Diagnostik & molekulare Diagnostik



Laborgeräte & Service

Weitere Information auf den folgenden Seiten!
See the following pages for more information!



Lieferung & Zahlungsart

siehe unsere [Liefer- und Versandbedingungen](#)

Zuschläge

- Mindermengenzuschlag
- Trockeneiszuschlag
- Gefahrgutzuschlag
- Expressversand

SZABO-SCANDIC HandelsgmbH

Quellenstraße 110, A-1100 Wien

T. +43(0)1 489 3961-0

F. +43(0)1 489 3961-7

mail@szabo-scandic.com

www.szabo-scandic.com

[linkedin.com/company/szaboscandic](https://www.linkedin.com/company/szaboscandic) 

BCL2L1 Pre-design Chimera RNAi

Catalog # : H00000598-R02

規格 : [10 nmol] [20 nmol]

List All

Specification

Product Description: Homo sapiens BCL2-like 1 (BCL2L1), nuclear gene encoding mitochondrial protein, transcript variant 2, mRNA.

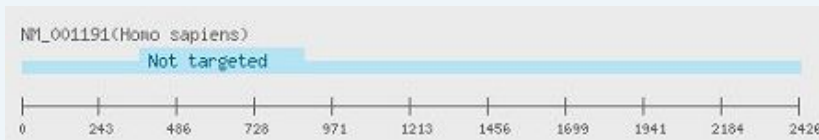
Reactivity: Human

Supplied Product: DEPC water

Target Refseq: NM_001191

Storage Instruction: Store at -20°C, do not exceed 4 - 5 freeze-thaw cycles to ensure product integrity.

Note: Position of the Chimera RNAi.



Application Image

RNAi Knockdown

Publication Reference

- dsCheck: highly sensitive off-target search software for double-stranded RNA-mediated RNA interference.
Naito Y, Yamada T, Matsumiya T, Ui-Tei K, Saigo K, Morishita S. *Nucleic Acids Res.* 2005 Jul 1;33(Web Server issue):W589-91.
- Functional dissection of siRNA sequence by systematic DNA substitution: modified siRNA with a DNA seed arm is a powerful tool for mammalian gene silencing with significantly reduced off-target effect.
Ui-Tei K, Naito Y, Zenno S, Nishi K, Yamato K, Takahashi F, Juni A, Saigo K. *Nucleic Acids Res.* 2008 Apr;36(7):2136-51. Epub 2008 Feb 11.
- Guidelines for the selection of highly effective siRNA sequences for mammalian and chick RNA interference.
Ui-Tei K, Naito Y, Takahashi F, Haraguchi T, Ohki-Hamazaki H, Juni A, Ueda R, Saigo K. *Nucleic Acids Res.* 2004 Feb 9;32(3):936-48. Print 2004.
- siDirect: highly effective, target-specific siRNA design software for mammalian RNA interference.
Naito Y, Yamada T, Ui-Tei K, Morishita S, Saigo K. *Nucleic Acids Res.* 2004 Jul 1;32(Web Server issue):W124-9.

Applications

RNAi Knockdown

Gene Information

Entrez GeneID: [598](#)

Gene Name: BCL2L1

Gene Alias: BCL-XL/S,BCL2L,BCLX,Bcl-X,DKFZp781P2092,bcl-xL,bcl-xS

Gene BCL2-like 1

Description:

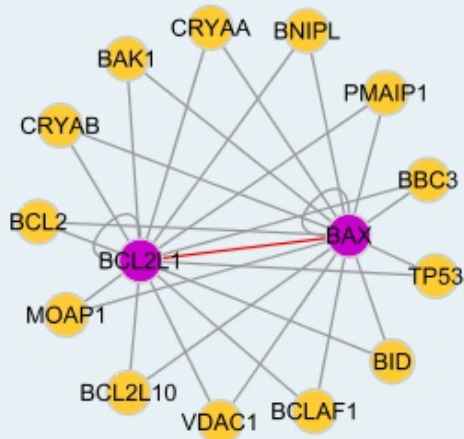
Omim ID: [600039](#)

Gene Ontology: [Hyperlink](#)

Gene Summary: The protein encoded by this gene belongs to the BCL-2 protein family. BCL-2 family members form hetero- or homodimers and act as anti- or pro-apoptotic regulators that are involved in a wide variety of cellular activities. The proteins encoded by this gene are located at the outer mitochondrial membrane, and have been shown to regulate outer mitochondrial membrane channel (VDAC) opening. VDAC regulates mitochondrial membrane potential, and thus controls the production of reactive oxygen species and release of cytochrome C by mitochondria, both of which are the potent inducers of cell apoptosis. Two alternatively spliced transcript variants, which encode distinct isoforms, have been reported. The longer isoform acts as an apoptotic inhibitor and the shorter form acts as an apoptotic activator. [provided by RefSeq]

Other Designations: OTTHUMP00000030550,OTTHUMP00000030551,OTTHUMP00000030553

Interactome



Gene Pathway

[Amyotrophic lateral sclerosis \(ALS\)](#) [Apoptosis](#) [Chronic myeloid leukemia](#) [Jak-STAT signaling pathway](#) [Pancreatic cancer](#) [Pathways in cancer](#) [Small cell lung cancer](#)

Related Disease

[Adenocarcinoma](#) [Alzheimer Disease](#) [Amnesia](#) [Cognition Disorders](#) [Colorectal Neoplasms](#) [Disease Progression](#) [Esophageal Neoplasms](#) [Genetic Predisposition to Disease](#) [Hematologic Diseases](#) [Hodgkin Disease](#) [Lymphoma, B-Cell](#) [Lymphoma, Follicular](#) [Lymphoma, Large B-Cell, Diffuse](#) [Lymphoma, Non-Hodgkin](#) [Lymphoproliferative Disorders](#) [Multiple Sclerosis](#) [Neoplasm Metastasis](#) [Neuropsychological Tests](#) [Occupational Diseases](#)

... see more