



# SZABO SCANDIC

Part of Europa Biosite

## Produktinformation



Forschungsprodukte & Biochemikalien



Zellkultur & Verbrauchsmaterial



Diagnostik & molekulare Diagnostik



Laborgeräte & Service

Weitere Information auf den folgenden Seiten!  
See the following pages for more information!



### Lieferung & Zahlungsart

siehe unsere [Liefer- und Versandbedingungen](#)

### Zuschläge

- Mindermengenzuschlag
- Trockeneiszuschlag
- Gefahrgutzuschlag
- Expressversand

### SZABO-SCANDIC HandelsgmbH

Quellenstraße 110, A-1100 Wien

T. +43(0)1 489 3961-0

F. +43(0)1 489 3961-7

[mail@szabo-scandic.com](mailto:mail@szabo-scandic.com)

[www.szabo-scandic.com](http://www.szabo-scandic.com)

[linkedin.com/company/szaboscandic](https://www.linkedin.com/company/szaboscandic) 

## BCL2L1 293T Cell Transient Overexpression Lysate(Denatured)

Catalog # : H00000598-T01

規格 : [ 100 uL ]

List All

### Specification

**Transfected Cell Line:** 293T

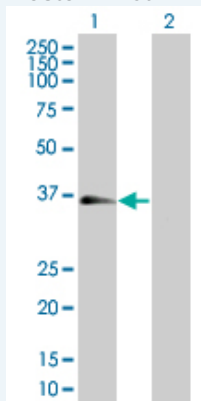
**Plasmid:** pCMV-BCL2L1 full-length

**Host:** Human

**Theoretical MW (kDa):** 25.74

**Quality Control Testing:** Transient overexpression cell lysate was tested with Anti-BCL2L1 antibody ([H00000598-B01](#)) by Western Blots.

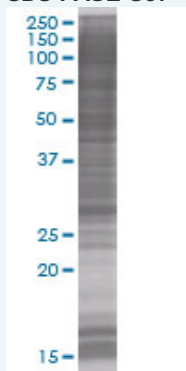
#### Western Blot



Lane 1: BCL2L1 transfected lysate ( 26 KDa)

Lane 2: Non-transfected lysate.

#### SDS-PAGE Gel



BCL2L1 transfected lysate.

**Storage Buffer:** 1X Sample Buffer (50 mM Tris-HCl, 2% SDS, 10% glycerol, 300 mM 2-mercaptoethanol, 0.01% Bromophenol blue)

**Storage Instruction:** Store at -80°C. Aliquot to avoid repeated freezing and thawing.

**MSDS:**  [Download](#)

### Applications

### Application Image

Western Blot

## Western Blot

### Gene Information

Entrez GeneID: [598](#)

GeneBank [NM\\_138578](#)  
Accession#:

Protein [NP\\_612815](#)  
Accession#:

Gene Name: BCL2L1

Gene Alias: BCL-XL/S,BCL2L,BCLX,Bcl-X,DKFZp781P2092,bcl-xL,bcl-xS

Gene Description: BCL2-like 1

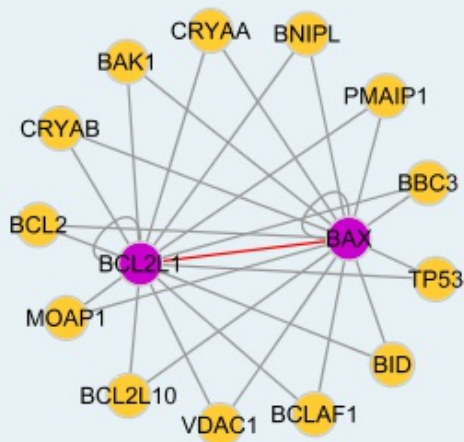
Omim ID: [600039](#)

Gene Ontology: [Hyperlink](#)

**Gene Summary:** The protein encoded by this gene belongs to the BCL-2 protein family. BCL-2 family members form hetero- or homodimers and act as anti- or pro-apoptotic regulators that are involved in a wide variety of cellular activities. The proteins encoded by this gene are located at the outer mitochondrial membrane, and have been shown to regulate outer mitochondrial membrane channel (VDAC) opening. VDAC regulates mitochondrial membrane potential, and thus controls the production of reactive oxygen species and release of cytochrome C by mitochondria, both of which are the potent inducers of cell apoptosis. Two alternatively spliced transcript variants, which encode distinct isoforms, have been reported. The longer isoform acts as an apoptotic inhibitor and the shorter form acts as an apoptotic activator. [provided by RefSeq]

Other Designations: OTTHUMP00000030550,OTTHUMP00000030551,OTTHUMP00000030553

### Interactome



### Gene Pathway

[Amyotrophic lateral sclerosis \(ALS\)](#) [Apoptosis](#) [Chronic myeloid leukemia](#)

[Jak-STAT signaling pathway](#) [Pancreatic cancer](#) [Pathways in cancer](#) [Small cell lung cancer](#)

### **Related Disease**

---

[Adenocarcinoma](#) [Alzheimer Disease](#) [Amnesia](#) [Cognition Disorders](#) [Colorectal Neoplasms](#)  
[Disease Progression](#) [Esophageal Neoplasms](#) [Genetic Predisposition to Disease](#)  
[Hematologic Diseases](#) [Hodgkin Disease](#) [Lymphoma, B-Cell](#) [Lymphoma, Follicular](#)  
[Lymphoma, Large B-Cell, Diffuse](#) [Lymphoma, Non-Hodgkin](#) [Lymphoproliferative Disorders](#)  
[Multiple Sclerosis](#) [Neoplasm Metastasis](#) [Neuropsychological Tests](#) [Occupational Diseases](#)

**... see more**

---

[服務條款](#) | [隱私權政策](#) | [著作及商標](#) | [網站地圖](#)

©2016 亞諾法生技股份有限公司 Abnova Corporation. 版權所有.