



# SZABO SCANDIC

Part of Europa Biosite

## Produktinformation



Forschungsprodukte & Biochemikalien



Zellkultur & Verbrauchsmaterial



Diagnostik & molekulare Diagnostik



Laborgeräte & Service

Weitere Information auf den folgenden Seiten!  
See the following pages for more information!



### Lieferung & Zahlungsart

siehe unsere [Liefer- und Versandbedingungen](#)

### Zuschläge

- Mindermengenzuschlag
- Trockeneiszuschlag
- Gefahrgutzuschlag
- Expressversand

### SZABO-SCANDIC HandelsgmbH

Quellenstraße 110, A-1100 Wien

T. +43(0)1 489 3961-0

F. +43(0)1 489 3961-7

[mail@szabo-scandic.com](mailto:mail@szabo-scandic.com)

[www.szabo-scandic.com](http://www.szabo-scandic.com)

[linkedin.com/company/szaboscandic](https://www.linkedin.com/company/szaboscandic) 



## BCL2L2 purified MaxPab mouse polyclonal antibody (B01P) MaxPab®

Catalog # : H00000599-B01P

規格 : [ 50 ug ]

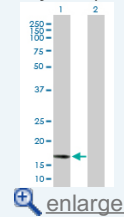
[List All](#)

### Specification

<b>Product Description:</b>	Mouse polyclonal antibody raised against a full-length human BCL2L2 protein.
<b>Immunogen:</b>	BCL2L2 (NP_004041.1, 1 a.a. ~ 193 a.a) full-length human protein.
<b>Sequence:</b>	MATPASAPDTRALVADFVGYKLRQKGYVCGAGPGEGPAADPLHQAMR AAGDEFETRFRRTFSDLAAQLHVTGPSAQQRFTQVSDQLFQGGPNWG RLVAFFVFGAALCAESVKNEMEPLVGQVQEWVMVAYLETRLADWIHSSG GWAFTALYGDGALEEARRLREGNWASVRTVLTGAVALGALVTVGAF ASK
<b>Host:</b>	Mouse
<b>Reactivity:</b>	Human
<b>Quality Control Testing:</b>	Antibody reactive against mammalian transfected lysate.
<b>Storage Buffer:</b>	In 1x PBS, pH 7.4
<b>Storage Instruction:</b>	Store at -20°C or lower. Aliquot to avoid repeated freezing and thawing.
<b>MSDS:</b>	 <a href="#">Download</a>
<b>Datasheet:</b>	 <a href="#">Download</a>

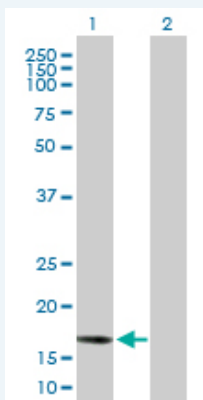
### Application Image

Western Blot (Transfected lysate)



### Applications

#### Western Blot (Transfected lysate)



Western Blot analysis of BCL2L2 expression in transfected 293T cell line ([H00000599-T02](#)) by BCL2L2 MaxPab polyclonal antibody.

Lane 1: BCL2L2 transfected lysate(21.23 KDa).

Lane 2: Non-transfected lysate.

 [Protocol Download](#)

### Gene Information

Entrez GeneID: [599](#)

GeneBank [NM\\_004050](#)  
Accession#:

Protein [NP\\_004041.1](#)  
Accession#:

Gene Name: BCL2L2

Gene Alias: BCL-W,BCLW,KIAA0271

Gene Description: BCL2-like 2

Omim ID: [601931](#)

Gene Ontology: [Hyperlink](#)

**Gene Summary:** This gene encodes a member of the BCL-2 protein family. The proteins of this family form hetero- or homodimers and act as anti- and pro-apoptotic regulators. Expression of this gene in cells has been shown to contribute to reduced cell apoptosis under cytotoxic conditions. Studies of the related gene in mice indicated a role in the survival of NGF- and BDNF-dependent neurons. Mutation and knockout studies of the mouse gene demonstrated an essential role in adult spermatogenesis. [provided by RefSeq]

Other Designations: BCL2-like 2 protein,apoptosis regulator BCL-W

#### Related Disease

[Azoospermia](#) [Cardiovascular Diseases](#) [Diabetes Mellitus, Type 2](#) [Edema](#)  
[Genetic Predisposition to Disease](#) [Head and Neck Neoplasms](#) [Hodgkin Disease](#)  
[Infertility, Male](#) [Leukemia, chronic myeloid](#)  
[Leukemia, Myelogenous, Chronic, BCR-ABL Positive](#) [Lymphoma, B-Cell](#)  
[Lymphoma, Follicular](#) [Lymphoma, Large B-Cell, Diffuse](#) [Lymphoproliferative Disorders](#)  
[Neoplasm Recurrence, Local](#) [Neoplasms, Second Primary](#) [Neovascularization, Pathologic](#)  
[Oligospermia](#) [Waldenstrom Macroglobulinemia](#)

... see more