



SZABO SCANDIC

Part of Europa Biosite

Produktinformation



Forschungsprodukte & Biochemikalien



Zellkultur & Verbrauchsmaterial



Diagnostik & molekulare Diagnostik



Laborgeräte & Service

Weitere Information auf den folgenden Seiten!
See the following pages for more information!



Lieferung & Zahlungsart

siehe unsere [Liefer- und Versandbedingungen](#)

Zuschläge

- Mindermengenzuschlag
- Trockeneiszuschlag
- Gefahrgutzuschlag
- Expressversand

SZABO-SCANDIC HandelsgmbH

Quellenstraße 110, A-1100 Wien

T. +43(0)1 489 3961-0

F. +43(0)1 489 3961-7

mail@szabo-scandic.com

www.szabo-scandic.com

[linkedin.com/company/szaboscandic](https://www.linkedin.com/company/szaboscandic) 

BCL2L2 monoclonal antibody (M01), clone 2E4

Catalog # : H00000599-M01

規格 : [100 ug]

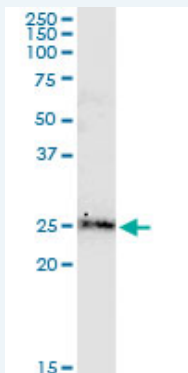
[List All](#)

Specification

Product Description:	Mouse monoclonal antibody raised against a full-length recombinant BCL2L2.
Immunogen:	BCL2L2 (NP_004041.1, 1 a.a. ~ 193 a.a) full-length recombinant protein with GST tag. MW of the GST tag alone is 26 KDa.
Sequence:	MATPASAPDTRALVADFVGYKLRQKGYVCGAGPGEGPAADPLHQAMR AAGDEFETRFRRTFSDLAAQLHVTPGSAQQRFTQVSDELFGGGPNWG RLVAFFVFGAALCAESVNKEMEPLVGQVQEWVMVAYLETRLADWIHSSG GWAEFTALYGDGALEEARRLREGNWASVRTVLTGAVALGALVTVGAF ASK
Host:	Mouse
Reactivity:	Human
Isotype:	IgG2a Kappa
Quality Control Testing:	Antibody Reactive Against Recombinant Protein.
Storage Buffer:	In 1x PBS, pH 7.4
Storage Instruction:	Store at -20°C or lower. Aliquot to avoid repeated freezing and thawing.
MSDS:	Download
Datasheet:	Download

Applications

Western Blot (Tissue lysate)



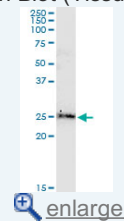
BCL2L2 monoclonal antibody (M01), clone 2E4. Western Blot analysis of BCL2L2 expression in human colon.

[Protocol Download](#)

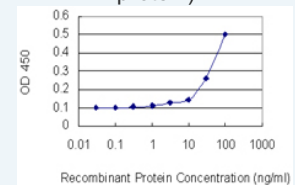
Sandwich ELISA (Recombinant protein)

Application Image

Western Blot (Tissue lysate)

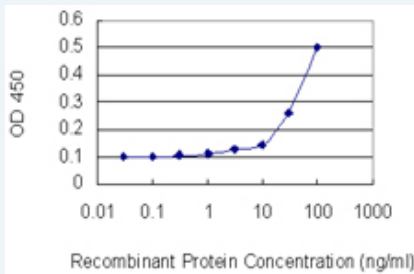


Sandwich ELISA (Recombinant protein)




[enlarge](#)

ELISA



Detection limit for recombinant GST tagged BCL2L2 is 10 ng/ml as a capture antibody.

 [Protocol Download](#)

ELISA

Gene Information

Entrez GeneID: [599](#)

GeneBank [NM_004050.2](#)

Accession#:

Protein [NP_004041.1](#)

Accession#:

Gene Name: BCL2L2

Gene Alias: BCL-W,BCLW,KIAA0271

Gene BCL2-like 2

Description:

Omim ID: [601931](#)

Gene Ontology: [Hyperlink](#)

Gene Summary: This gene encodes a member of the BCL-2 protein family. The proteins of this family form hetero- or homodimers and act as anti- and pro-apoptotic regulators. Expression of this gene in cells has been shown to contribute to reduced cell apoptosis under cytotoxic conditions. Studies of the related gene in mice indicated a role in the survival of NGF- and BDNF-dependent neurons. Mutation and knockout studies of the mouse gene demonstrated an essential role in adult spermatogenesis. [provided by RefSeq]

Other BCL2-like 2 protein,apoptosis regulator BCL-W

Designations:

Related Disease

[Azoospermia](#) [Cardiovascular Diseases](#) [Diabetes Mellitus, Type 2](#) [Edema](#)
[Genetic Predisposition to Disease](#) [Head and Neck Neoplasms](#) [Hodgkin Disease](#)
[Infertility, Male](#) [Leukemia, chronic myeloid](#)
[Leukemia, Myelogenous, Chronic, BCR-ABL Positive](#) [Lymphoma, B-Cell](#)
[Lymphoma, Follicular](#) [Lymphoma, Large B-Cell, Diffuse](#) [Lymphoproliferative Disorders](#)
[Neoplasm Recurrence, Local](#) [Neoplasms, Second Primary](#) [Neovascularization, Pathologic](#)
[Oligospermia](#) [Waldenstrom Macroglobulinemia](#)

... see more