



# SZABO SCANDIC

Part of Europa Biosite

## Produktinformation



Forschungsprodukte & Biochemikalien



Zellkultur & Verbrauchsmaterial



Diagnostik & molekulare Diagnostik



Laborgeräte & Service

Weitere Information auf den folgenden Seiten!  
See the following pages for more information!



### Lieferung & Zahlungsart

siehe unsere [Liefer- und Versandbedingungen](#)

### Zuschläge

- Mindermengenzuschlag
- Trockeneiszuschlag
- Gefahrgutzuschlag
- Expressversand

### SZABO-SCANDIC HandelsgmbH

Quellenstraße 110, A-1100 Wien

T. +43(0)1 489 3961-0

F. +43(0)1 489 3961-7

[mail@szabo-scandic.com](mailto:mail@szabo-scandic.com)

[www.szabo-scandic.com](http://www.szabo-scandic.com)

[linkedin.com/company/szaboscandic](https://www.linkedin.com/company/szaboscandic) 

## BCL2L2 293T Cell Transient Overexpression Lysate(Denatured)

Catalog # : H00000599-T02

規格 : [ 100 uL ]

[List All](#)

### Specification

**Transfected Cell Line:** 293T

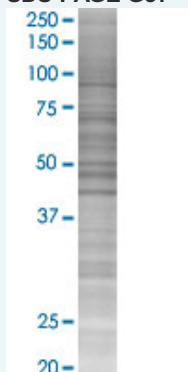
**Plasmid:** pCMV-BCL2L2 full-length

**Host:** Human

**Theoretical MW (kDa):** 20.8

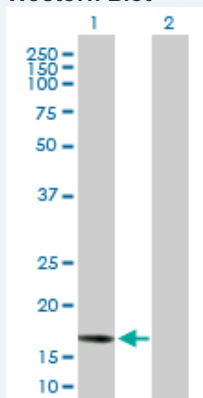
**Quality Control Testing:** Transient overexpression cell lysate was tested with Anti-BCL2L2 antibody ([H00000599-B01P](#)) by Western Blots.

#### SDS-PAGE Gel



BCL2L2 transfected lysate.

#### Western Blot



Lane 1: BCL2L2 transfected lysate ( 20.80 KDa)

Lane 2: Non-transfected lysate.

**Storage Buffer:** 1X Sample Buffer (50 mM Tris-HCl, 2% SDS, 10% glycerol, 300 mM 2-mercaptoethanol, 0.01% Bromophenol blue)

**Storage Instruction:** Store at -80°C. Aliquot to avoid repeated freezing and thawing.

**MSDS:**  [Download](#)

### Applications

## Western Blot

### Gene Information

Entrez GeneID: [599](#)

GeneBank Accession#: [NM\\_004050](#)

Protein Accession#: [NP\\_004041.1](#)

Gene Name: BCL2L2

Gene Alias: BCL-W,BCLW,KIAA0271

Gene Description: BCL2-like 2

Omim ID: [601931](#)

Gene Ontology: [Hyperlink](#)

**Gene Summary:** This gene encodes a member of the BCL-2 protein family. The proteins of this family form hetero- or homodimers and act as anti- and pro-apoptotic regulators. Expression of this gene in cells has been shown to contribute to reduced cell apoptosis under cytotoxic conditions. Studies of the related gene in mice indicated a role in the survival of NGF- and BDNF-dependent neurons. Mutation and knockout studies of the mouse gene demonstrated an essential role in adult spermatogenesis. [provided by RefSeq]

Other Designations: BCL2-like 2 protein,apoptosis regulator BCL-W

### Related Disease

[Azoospermia](#) [Cardiovascular Diseases](#) [Diabetes Mellitus, Type 2](#) [Edema](#) [Genetic Predisposition to Disease](#) [Head and Neck Neoplasms](#) [Hodgkin Disease](#) [Infertility, Male](#) [Leukemia, chronic myeloid](#) [Leukemia, Myelogenous, Chronic, BCR-ABL Positive](#) [Lymphoma, B-Cell](#) [Lymphoma, Follicular](#) [Lymphoma, Large B-Cell, Diffuse](#) [Lymphoproliferative Disorders](#) [Neoplasm Recurrence, Local](#) [Neoplasms, Second Primary](#) [Neovascularization, Pathologic](#) [Oligospermia](#) [Waldenstrom Macroglobulinemia](#)

... see more

[服務條款](#) | [隱私權政策](#) | [著作及商標](#) | [網站地圖](#)

©2016 亞諾法生技股份有限公司 Abnova Corporation. 版權所有.