



SZABO SCANDIC

Part of Europa Biosite

Produktinformation



Forschungsprodukte & Biochemikalien



Zellkultur & Verbrauchsmaterial



Diagnostik & molekulare Diagnostik



Laborgeräte & Service

Weitere Information auf den folgenden Seiten!
See the following pages for more information!



Lieferung & Zahlungsart

siehe unsere [Liefer- und Versandbedingungen](#)

Zuschläge

- Mindermengenzuschlag
- Trockeneiszuschlag
- Gefahrgutzuschlag
- Expressversand

SZABO-SCANDIC HandelsgmbH

Quellenstraße 110, A-1100 Wien

T. +43(0)1 489 3961-0

F. +43(0)1 489 3961-7

mail@szabo-scandic.com

www.szabo-scandic.com

[linkedin.com/company/szaboscandic](https://www.linkedin.com/company/szaboscandic) 

BCL3 purified MaxPab mouse polyclonal antibody (B01P) MaxPab®

Catalog # : H00000602-B01P

規格 : [50 ug]

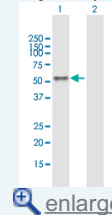
[List All](#)

Specification

Product Description:	Mouse polyclonal antibody raised against a full-length human BCL3 protein.
Immunogen:	BCL3 (NP_005169.1, 1 a.a. ~ 446 a.a) full-length human protein.
Sequence:	MDEGPVDLRTRPKAAGLPGAALPLRKRPLRAPSPEPAAPRGAAGLVVP LDPLRGGCDLPAVPGPPHGLARPEALYPGALLPLYPTRAMGSPFPLVN LPTPLYPM MCPMEHPLSADIAMATRADEDGDTPLHIAVVQGNLPAVHRLV NLFQQGGRELDIYNNLRQTPLHLAVITLPSVVRLLVTAGASPMALDRHG QTA AHLACEHRSPTCLRALLDSAAPGTL DLEARNYDGLTALHVAVNTEC QETVQLLLER GADIDAVIDIKSGRSPLIHAVENNSLSMVQLLLQHGANVNA QMYSGSSALHSASGRGLLPLVRTLV RSGADSS LKNCHNDTPLMVARSR RVIDILRGKATRPASTSQPD PSPDRSANTSP ESSR LSSNGLLSASPSS PSQSPRPDP PGFPMAPPNFFLSPSPPAFLPFAGVLRGPRVPPSPAP GGS
Host:	Mouse
Reactivity:	Human
Quality Control Testing:	Antibody reactive against mammalian transfected lysate.
Storage Buffer:	In 1x PBS, pH 7.4
Storage Instruction:	Store at -20°C or lower. Aliquot to avoid repeated freezing and thawing.
MSDS:	Download
Datasheet:	Download

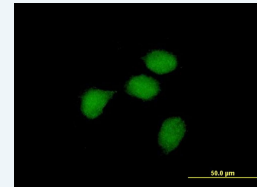
Application Image

Western Blot (Transfected lysate)



[enlarge](#)

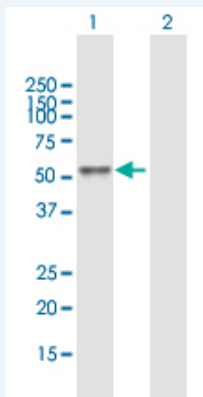
Immunofluorescence



[enlarge](#)

Applications

Western Blot (Transfected lysate)

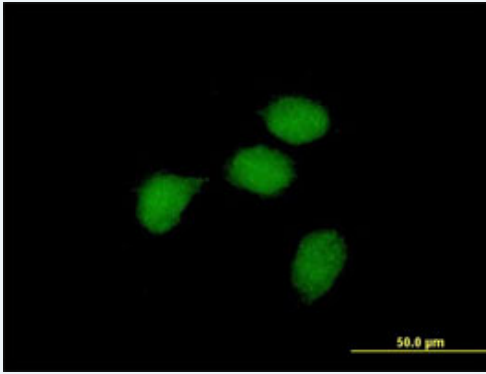



Western Blot analysis of BCL3 expression in transfected 293T cell line ([H00000602-T01](#)) by BCL3 MaxPab polyclonal antibody.

Lane 1: BCL3 transfected lysate(49.06 KDa).

Lane 2: Non-transfected lysate.

Immunofluorescence



 enlarge this image

Immunofluorescence of purified MaxPab antibody to BCL3 on HeLa cell. [antibody concentration 10 ug/ml]

Gene Information

Entrez GeneID: [602](#)

GeneBank Accession#: [NM_005178](#)

Protein Accession#: [NP_005169.1](#)

Gene Name: BCL3

Gene Alias: BCL4,D19S37

Gene Description: B-cell CLL/lymphoma 3

Omim ID: [109560](#)

Gene Ontology: [Hyperlink](#)

Gene Summary: This gene is a proto-oncogene candidate. It is identified by its translocation into the immunoglobulin alpha-locus in some cases of B-cell leukemia. The protein encoded by this gene contains seven ankyrin repeats, which are most closely related to those found in I kappa B proteins. This protein functions as a transcriptional co-activator that activates through its association with NF-kappa B homodimers. The expression of this gene can be induced by NF-kappa B, which forms a part of the autoregulatory loop that controls the nuclear residence of p50 NF-kappa B. [provided by RefSeq]

Other Designations: B-cell leukemia/lymphoma 3,B-cell lymphoma 3-encoded protein,chronic lymphatic leukemia protein

Related Disease

[Cardiovascular Diseases](#) [Cleft Lip](#) [Cleft Palate](#) [Crohn Disease](#) [Disease Models, Animal](#) [Genetic Predisposition to Disease](#)