



# SZABO SCANDIC

Part of Europa Biosite

## Produktinformation



Forschungsprodukte & Biochemikalien



Zellkultur & Verbrauchsmaterial



Diagnostik & molekulare Diagnostik



Laborgeräte & Service

Weitere Information auf den folgenden Seiten!  
See the following pages for more information!



### Lieferung & Zahlungsart

siehe unsere [Liefer- und Versandbedingungen](#)

### Zuschläge

- Mindermengenzuschlag
- Trockeneiszuschlag
- Gefahrgutzuschlag
- Expressversand

### SZABO-SCANDIC HandelsgmbH

Quellenstraße 110, A-1100 Wien

T. +43(0)1 489 3961-0

F. +43(0)1 489 3961-7

[mail@szabo-scandic.com](mailto:mail@szabo-scandic.com)

[www.szabo-scandic.com](http://www.szabo-scandic.com)

[linkedin.com/company/szaboscandic](https://www.linkedin.com/company/szaboscandic) 

## BCL9 monoclonal antibody (M02), clone 1A2

Catalog # : H00000607-M02

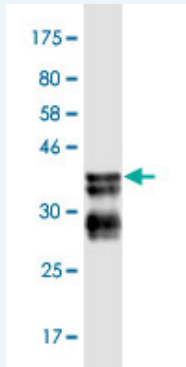
規格 : [ 100 ug ]

[List All](#)

### Specification

<b>Product Description:</b>	Mouse monoclonal antibody raised against a partial recombinant BCL9.
<b>Immunogen:</b>	BCL9 (NP_004317, 1036 a.a. ~ 1135 a.a) partial recombinant protein with GST tag. MW of the GST tag alone is 26 KDa.
<b>Sequence:</b>	DDDSPPARSPNLPSMNNMPGMGINTQNPRIISGPNPVPMPPTLSPMGMT QPLSHSNQMPSNAVGNIPPHGVPMGPGLMSHNPIMGHGSQEPPMVP QGRM
<b>Host:</b>	Mouse
<b>Reactivity:</b>	Human
<b>Isotype:</b>	IgG1 Kappa

**Quality Control Testing:** Antibody Reactive Against Recombinant Protein.



Western Blot detection against Immunogen (36.74 KDa) .

**Storage Buffer:** In 1x PBS, pH 7.4

**Storage Instruction:** Store at -20°C or lower. Aliquot to avoid repeated freezing and thawing.

**MSDS:** [Download](#)

**Datasheet:** [Download](#)

### Applications

**Western Blot (Recombinant protein)**

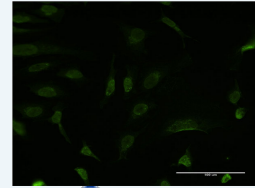
[Protocol Download](#)

**Immunofluorescence**

### Application Image

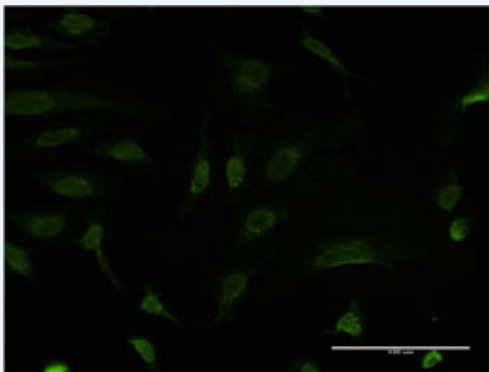
Western Blot (Recombinant protein)

Immunofluorescence



[enlarge](#)

ELISA



[enlarge this image](#)

Immunofluorescence of monoclonal antibody to BCL9 on HeLa cell . [antibody concentration 10 ug/ml]

[Protocol Download](#)

---

## ELISA

---

## Gene Information

---

**Entrez GeneID:** [607](#)

**GeneBank  
Accession#:** [NM\\_004326](#)

**Protein  
Accession#:** [NP\\_004317](#)

**Gene Name:** BCL9

**Gene Alias:** LGS,MGC131591

**Gene  
Description:** B-cell CLL/lymphoma 9

**Omim ID:** [602597](#)

**Gene Ontology:** [Hyperlink](#)

**Gene Summary:** BCL9 is associated with B-cell acute lymphoblastic leukemia. It may be a target of translocation in B-cell malignancies with abnormalities of 1q21. Its function is unknown. The overexpression of BCL9 may be of pathogenic significance in B-cell malignancies. [provided by RefSeq]

**Other  
Designations:** OTTHUMP00000015909

---

## Related Disease

---

[Cardiovascular Diseases](#) [Diabetes Mellitus, Type 2](#) [Disease Progression](#)  
[Disease Susceptibility](#) [Edema](#) [HIV Infections](#) [Tobacco Use Disorder](#)