



# SZABO SCANDIC

Part of Europa Biosite

## Produktinformation



Forschungsprodukte & Biochemikalien



Zellkultur & Verbrauchsmaterial



Diagnostik & molekulare Diagnostik



Laborgeräte & Service

Weitere Information auf den folgenden Seiten!  
See the following pages for more information!



### Lieferung & Zahlungsart

siehe unsere [Liefer- und Versandbedingungen](#)

### Zuschläge

- Mindermengenzuschlag
- Trockeneiszuschlag
- Gefahrgutzuschlag
- Expressversand

### SZABO-SCANDIC HandelsgmbH

Quellenstraße 110, A-1100 Wien

T. +43(0)1 489 3961-0

F. +43(0)1 489 3961-7

[mail@szabo-scandic.com](mailto:mail@szabo-scandic.com)

[www.szabo-scandic.com](http://www.szabo-scandic.com)

[linkedin.com/company/szaboscandic](https://www.linkedin.com/company/szaboscandic) 



## BCR MaxPab mouse polyclonal antibody (B01) MaxPab®

Catalog # : H00000613-B01

規格 : [ 50 uL ]

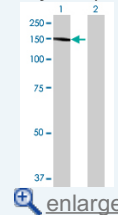
[List All](#)

### Specification

<b>Product Description:</b>	Mouse polyclonal antibody raised against a full-length human BCR protein.
<b>Immunogen:</b>	BCR (AAH66122.1, 1 a.a. ~ 1076 a.a) full-length human protein.
<b>Sequence:</b>	MVDPVGF AEAWKAQFPDSEPPRMELRSVGDIEQELERCKASIRRLQEVEV NQERFRMIYLQTL LAKEKKS YDRQRWGF RRAAQAPDGASEPRASASRP QPAPADGADPPPAEEPEARPDGEGSPGKARPGTARRPGAAASGERDD RGPPASVAALRSNFERIRKGGHQPADAEPFYVNVFHHERGLVKVND KEYSDRISSLGSQAMQMERKKSQHGAGSSVGDASRPPYRGRSSESSC GVDGDYEDAELNPRFLKDNLIDANGGSRPPWPPLEYQPYQSIYVGGMM EGEGKGPLLRSQSTSEQEKRLTWPRRSYSPRSFEDCGGGYTPDCSSN ENLTSSEEDFSSGQSSRVSPSTTYRMFRDKSRSPSQNSQQSF DSSSP PTPQCHKRHRHCPVVVSEATVGVVKTGQIWPNDGEGAFHGDADGSFG TPPGYGCAADRAEEQRRHQDGLPYIDDSPSSPHLSSKGRGSRDALVS GALESTKASELDLEKGLEMRKWVLSGILASEETYLSHLEALLLPMKPLKA AATTSQPVLTSQIETIFFKVP ELYEIHKEFYDGLFPRVQQWSHQQRVG DLFQKLASQLGVYRAFVDNYGVAMEMA EKKCCQANAQFAEISENLRARSN KDAKDPTTKNSLETLLYKPVDRVTRSTLVLDLLKHTPASHPDHPLLQDA LRISQNFLSSINEITPRRQSM TVKKGEHRQLLKDSFMVLEVEGARKLRH VFLFTDLLLCTKLKQSGGKTQQYDCKWYIPLTDLSFQMVDELEAVPNIP LVPDEELDALKIKISQIKSDIQREKRANKGSKATERLKKLSEQESLLLLMS PSMAFRVHVRNGKSYTFLISSDYERA EWRENIREQQKCFRSFSLTSVE LQMLTNSCVKLQTVHSIPLTINKEDDESPGLYGFLNVVHSATGFKQSSNL YCTLEVDSFGYFVNKAKTRVYRDTAEPNWNEFEIELEGSQTLRILCYEK CYNKTKIPKEDGESTDRLMGKGQVQLDPQALQDRDWQRTVIAMNGIEV KLSVKFNSREFSLKRMP SRKQTGVFGVKIAVTKRERSKVPIVRCQVE
<b>Host:</b>	Mouse
<b>Reactivity:</b>	Human
<b>Quality Control Testing:</b>	Antibody reactive against mammalian transfected lysate.
<b>Storage Buffer:</b>	No additive
<b>Storage Instruction:</b>	Store at -20°C or lower. Aliquot to avoid repeated freezing and thawing.
<b>Note:</b>	For IHC and IF applications, antibody purification with Protein A will be needed prior to use.
<b>MSDS:</b>	 <a href="#">Download</a>
<b>Datasheet:</b>	 <a href="#">Download</a>

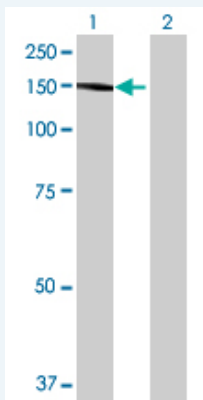
### Application Image

Western Blot (Transfected lysate)



### Applications

Western Blot (Transfected lysate)



Western Blot analysis of BCR expression in transfected 293T cell line (H00000613-T01) by BCR MaxPab polyclonal antibody.

Lane 1: BCR transfected lysate(118.36 KDa).  
Lane 2: Non-transfected lysate.

 [Protocol Download](#)

### Gene Information

**Entrez GeneID:** [613](#)

**GeneBank Accession#:** [BC066122.1](#)

**Protein Accession#:** [AAH66122.1](#)

**Gene Name:** BCR

**Gene Alias:** ALL,BCR-ABL1,BCR1,CML,D22S11,D22S662,FLJ16453,PHL

**Gene Description:** breakpoint cluster region

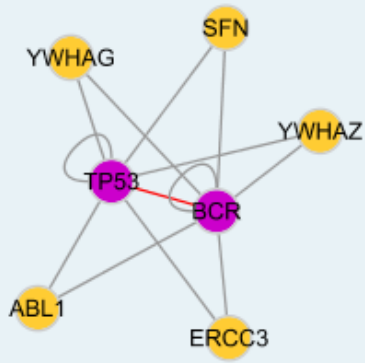
**Omim ID:** [151410](#), [608232](#)

**Gene Ontology:** [Hyperlink](#)

**Gene Summary:** A reciprocal translocation between chromosomes 22 and 9 produces the Philadelphia chromosome, which is often found in patients with chronic myelogenous leukemia. The chromosome 22 breakpoint for this translocation is located within the BCR gene. The translocation produces a fusion protein which is encoded by sequence from both BCR and ABL, the gene at the chromosome 9 breakpoint. Although the BCR-ABL fusion protein has been extensively studied, the function of the normal BCR gene product is not clear. The protein has serine/threonine kinase activity and is a GTPase-activating protein for p21rac. Two transcript variants encoding different isoforms have been found for this gene. [provided by RefSeq]

**Other Designations:** bcr-abl1 e14a3 chimeric protein

### Interactome



### Gene Pathway

[Chronic myeloid leukemia](#) [Pathways in cancer](#)

### Related Disease

[Alzheimer Disease](#) [Alzheimer disease](#) [Angina Pectoris, Variant](#) [Bipolar Disorder](#)  
[Brief Psychiatric Rating Scale](#) [Chromosome Breakage](#) [Coronary Vasospasm](#)  
[Depressive Disorder, Major](#) [Genetic Predisposition to Disease](#) [Leukemia, chronic myeloid](#)  
[Leukemia, Myelocytic, Acute](#) [Leukemia, Myelogenous, Chronic, BCR-ABL Positive](#)  
[Leukemia, Myeloid, Chronic](#) [Lung Neoplasms](#) [Pulmonary Disease, Chronic Obstructive](#)  
[Small Cell Lung Carcinoma](#) [Tobacco Use Disorder](#) [Urinary Bladder Neoplasms](#)  
[Werner syndrome](#)

[服務條款](#) | [隱私權政策](#) | [著作及商標](#) | [網站地圖](#)

©2016 亞諾法生技股份有限公司 Abnova Corporation. 版權所有.