



# SZABO SCANDIC

Part of Europa Biosite

## Produktinformation



Forschungsprodukte & Biochemikalien



Zellkultur & Verbrauchsmaterial



Diagnostik & molekulare Diagnostik



Laborgeräte & Service

Weitere Information auf den folgenden Seiten!  
See the following pages for more information!



### Lieferung & Zahlungsart

siehe unsere [Liefer- und Versandbedingungen](#)

### Zuschläge

- Mindermengenzuschlag
- Trockeneiszuschlag
- Gefahrgutzuschlag
- Expressversand

### SZABO-SCANDIC HandelsgmbH

Quellenstraße 110, A-1100 Wien

T. +43(0)1 489 3961-0

F. +43(0)1 489 3961-7

[mail@szabo-scandic.com](mailto:mail@szabo-scandic.com)

[www.szabo-scandic.com](http://www.szabo-scandic.com)

[linkedin.com/company/szaboscandic](https://www.linkedin.com/company/szaboscandic) 

**BCR purified MaxPab rabbit polyclonal antibody (D01P)** MaxPab®

Catalog # : H00000613-D01P

規格 : [ 100 ug ]

[List All](#)

**Specification**

**Product Description:** Rabbit polyclonal antibody raised against a full-length human BCR protein.

**Immunogen:** BCR (AAH66122.1, 1 a.a. ~ 1076 a.a) full-length human protein.

**Sequence:**  
MVDPVGF AEAWKAQFPDSEPPRMELRSVGDIEQELERCKASIRRLQEVEV  
NQERFRMIYLQTL LAKEKKS YDRQRWGF RRAAQAPDGASEPRASASRP  
QPAPADGADPPPAAEPEARPDGEGSPGKARPGTARRPGAAASGERDD  
RGPPASVAALRSNFERIRKGGQPGADAEKPFYVNVFHHERGLVKVND  
KEVSDRISSLGSQAMQMERKKSQHAGSSVGDASRPYPYRGRSSESSC  
GVDGDYEDAELNPRFLKDNLIDANGSRPPWPPLEYQPYQSIYVGGMM  
EGEGKGPLLRSQSTSEQEKRLTWPRRSYSPRSFEDCGGGYTPDCSSN  
ENLTSSEEDFSSGQSSRVSPSTTYRMFRDKSRSPSQNSQQSF DSSSP  
PTPQCHKRHRHCPVVSEATVGVVKTGQIWPNDGEGAFHGDADGSFG  
TPPGYGCAADRAEEQRRHQDGLPYIDDSPSSPHLSSKGRGSRDALVS  
GALESTKASELDLEKGLEMRKWVLSGILASEETYLSHLEALLPMKPLKA  
AATTSQPVLTSQQIETIFFKVP ELYEIHKEFYDGLFPRVQQWSHQQRVG  
DLFQKLASQLGVYRAFVDNYGVAMEMA EKCQANAQFAEISENL RARSN  
KDAKDPTTKNSLETLLYKPVDRVTRSTLVLDLLKHTPASHPDHPLLQDA  
LRISQNFLSSINEITPRRQSM TVKKGEHRQLLKDSFMV ELEGARKLRH  
VFLFTDLLCTKLKQSGGKTQQYDCKWYIPLTDLSFQM VDELEAVPNIP  
LVPDEELDALKIKISQIKSDIQREKRANKGSKATERLKKLSEQESLLLLMS  
PSMAFRVH SRNGKSYTFLISSDY ERAEWRENIREQQKCFRSFSLTSVE  
LQMLTNSCVKLQTVHSIPLTINKEDDESPGLYGFLNVIVHSATGFKQSSNL  
YCTLEVDSFGYFVNKAKTRVYRDTAEPNWNEFEIELEGSQTLRILCYEK  
CYNKTKIPKEDGESTDRLMGKGQVQLDPQALQDRDWQRTVIAMNGIEV  
KLSVKFNSREFSLKRMP SRKQTGVF GVKIAVTKRERSKVPIYVRQCVE

**Host:** Rabbit

**Reactivity:** Human

**Quality Control Testing:** Antibody reactive against mammalian transfected lysate.

**Storage Buffer:** In 1x PBS, pH 7.4

**Storage Instruction:** Store at -20°C or lower. Aliquot to avoid repeated freezing and thawing.

**MSDS:**  [Download](#)

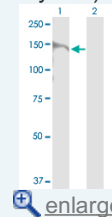
**Datasheet:**  [Download](#)

**Applications**

**Western Blot (Transfected lysate)**

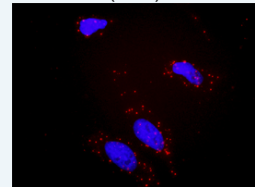
**Application Image**

Western Blot (Transfected lysate)

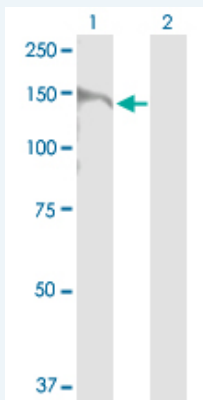


 [enlarge](#)

In situ Proximity Ligation Assay (Cell)



 [enlarge](#)

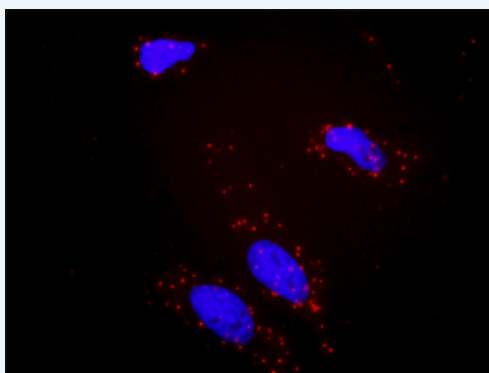


Western Blot analysis of BCR expression in transfected 293T cell line ([H00000613-T02](#)) by BCR MaxPab polyclonal antibody.

Lane 1: BCR transfected lysate(121.00 KDa).  
Lane 2: Non-transfected lysate.

Protocol Download

### *In situ* Proximity Ligation Assay (Cell)



Proximity Ligation Analysis of protein-protein interactions between BCR and PIK3CG. HeLa cells were stained with anti-BCR rabbit purified polyclonal 1:1200 and anti-PIK3CG mouse monoclonal antibody 1:50. Each red dot represents the detection of protein-protein interaction complex, and nuclei were counterstained with DAPI (blue).

### Gene Information

Entrez GeneID: [613](#)

GeneBank [BC066122.1](#)  
Accession#:

Protein [AAH66122.1](#)  
Accession#:

Gene Name: BCR

Gene Alias: ALL,BCR-ABL1,BCR1,CML,D22S11,D22S662,FLJ16453,PHL

Gene Description: breakpoint cluster region

Omim ID: [151410](#), [608232](#)

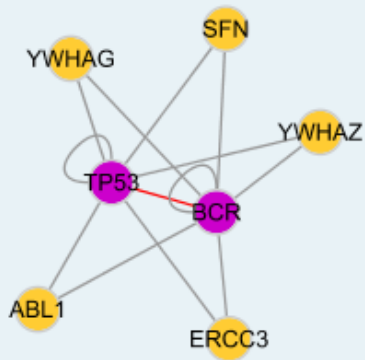
Gene Ontology: [Hyperlink](#)

**Gene Summary:** A reciprocal translocation between chromosomes 22 and 9 produces the Philadelphia chromosome, which is often found in patients with chronic myelogenous leukemia. The chromosome 22 breakpoint for this translocation is located within the BCR gene. The translocation produces a fusion protein which is encoded by sequence from both BCR and ABL, the gene at the chromosome 9 breakpoint. Although the BCR-ABL fusion protein has been extensively studied, the function of

the normal BCR gene product is not clear. The protein has serine/threonine kinase activity and is a GTPase-activating protein for p21rac. Two transcript variants encoding different isoforms have been found for this gene. [provided by RefSeq]

**Other Designations:** bcr-abl1 e14a3 chimeric protein

### Interactome



### Gene Pathway

[Chronic myeloid leukemia](#) [Pathways in cancer](#)

### Related Disease

[Alzheimer Disease](#) [Alzheimer disease](#) [Angina Pectoris, Variant](#) [Bipolar Disorder](#) [Brief Psychiatric Rating Scale](#) [Chromosome Breakage](#) [Coronary Vasospasm](#) [Depressive Disorder, Major](#) [Genetic Predisposition to Disease](#) [Leukemia, chronic myeloid](#) [Leukemia, Myelocytic, Acute](#) [Leukemia, Myelogenous, Chronic, BCR-ABL Positive](#) [Leukemia, Myeloid, Chronic](#) [Lung Neoplasms](#) [Pulmonary Disease, Chronic Obstructive](#) [Small Cell Lung Carcinoma](#) [Tobacco Use Disorder](#) [Urinary Bladder Neoplasms](#) [Werner syndrome](#)

[服務條款](#) | [隱私權政策](#) | [著作及商標](#) | [網站地圖](#)

©2016 亞諾法生技股份有限公司 Abnova Corporation. 版權所有.