



SZABO SCANDIC

Part of Europa Biosite

Produktinformation



Forschungsprodukte & Biochemikalien



Zellkultur & Verbrauchsmaterial



Diagnostik & molekulare Diagnostik



Laborgeräte & Service

Weitere Information auf den folgenden Seiten!
See the following pages for more information!



Lieferung & Zahlungsart

siehe unsere [Liefer- und Versandbedingungen](#)

Zuschläge

- Mindermengenzuschlag
- Trockeneiszuschlag
- Gefahrgutzuschlag
- Expressversand

SZABO-SCANDIC HandelsgmbH

Quellenstraße 110, A-1100 Wien

T. +43(0)1 489 3961-0

F. +43(0)1 489 3961-7

mail@szabo-scandic.com

www.szabo-scandic.com

[linkedin.com/company/szaboscandic](https://www.linkedin.com/company/szaboscandic) 

BCR monoclonal antibody (M01), clone 2E5

Catalog # : H00000613-M01

規格 : [100 ug]

[List All](#)

Specification

Product Description: Mouse monoclonal antibody raised against a partial recombinant BCR.

Immunogen: BCR (NP_004318.3, 182 a.a. ~ 280 a.a) partial recombinant protein with GST tag. MW of the GST tag alone is 26 KDa.

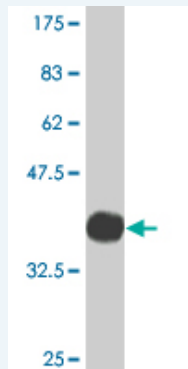
Sequence: FHHERGLVKVNDKEVSDRISSLGSQAMQMERKKSQHGAGSSVGDASRP
PYRGRSSESSCGVDGDYEDAELNPRFLKDNLIDANGGSRPPWPPLEYQ
PYQ

Host: Mouse

Reactivity: Human

Isotype: IgG2a Kappa

Quality Control Testing: Antibody Reactive Against Recombinant Protein.



Western Blot detection against Immunogen (36.63 KDa) .

Storage Buffer: In 1x PBS, pH 7.4

Storage Instruction: Store at -20°C or lower. Aliquot to avoid repeated freezing and thawing.

MSDS: [Download](#)

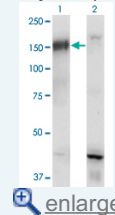
Datasheet: [Download](#)

Applications

Western Blot (Transfected lysate)

Application Image

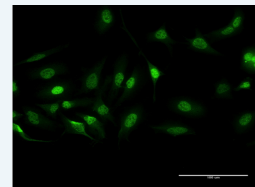
Western Blot (Transfected lysate)



[enlarge](#)

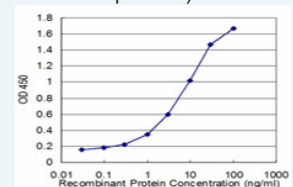
Western Blot (Recombinant protein)

Immunofluorescence



[enlarge](#)

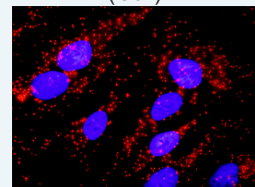
Sandwich ELISA (Recombinant protein)



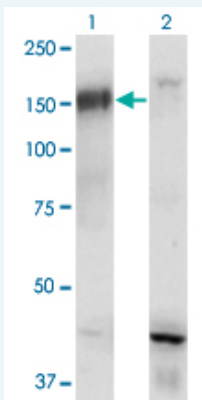
[enlarge](#)

ELISA

In situ Proximity Ligation Assay (Cell)



[enlarge](#)



Western Blot analysis of BCR expression in transfected 293T cell line by BCR monoclonal antibody (M01), clone 2E5.

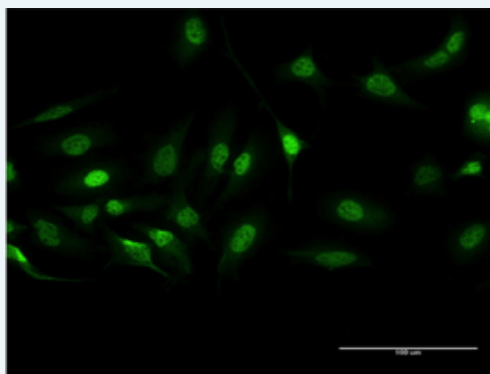
Lane 1: BCR transfected lysate (Predicted MW: 121 KDa).
Lane 2: Non-transfected lysate.

[Protocol Download](#)

Western Blot (Recombinant protein)

[Protocol Download](#)

Immunofluorescence

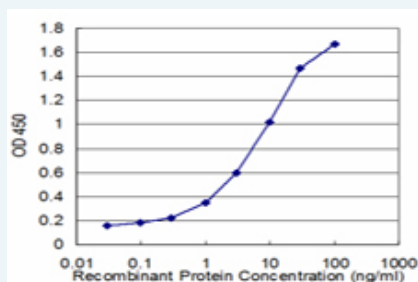


[enlarge this image](#)

Immunofluorescence of monoclonal antibody to BCR on HeLa cell . [antibody concentration 10 ug/ml]

[Protocol Download](#)

Sandwich ELISA (Recombinant protein)

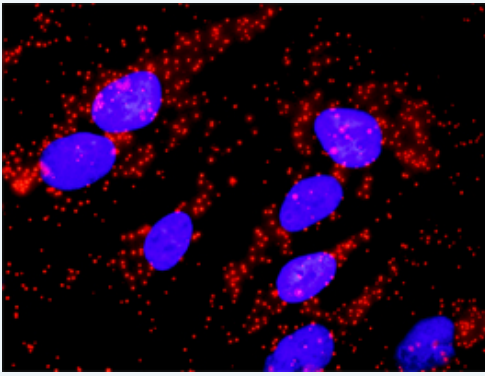


Detection limit for recombinant GST tagged BCR is approximately 0.1ng/ml as a capture antibody.

[Protocol Download](#)

ELISA

In situ Proximity Ligation Assay (Cell)



Proximity Ligation Analysis of protein-protein interactions between TP53 and BCR. HeLa cells were stained with anti-TP53 rabbit purified polyclonal 1:1200 and anti-BCR mouse monoclonal antibody 1:50. Each red dot represents the detection of protein-protein interaction complex, and nuclei were counterstained with DAPI (blue).

Gene Information

Entrez GeneID: [613](#)

**GeneBank
Accession#:** [NM_004327](#)

**Protein
Accession#:** [NP_004318.3](#)

Gene Name: BCR

Gene Alias: ALL,BCR-ABL1,BCR1,CML,D22S11,D22S662,FLJ16453,PHL

**Gene
Description:** breakpoint cluster region

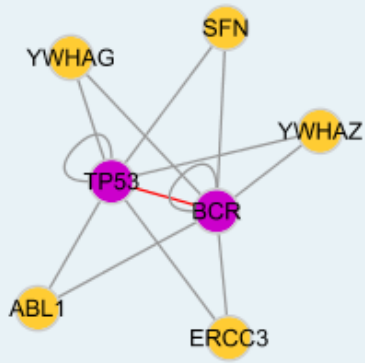
Omim ID: [151410](#), [608232](#)

Gene Ontology: [Hyperlink](#)

Gene Summary: A reciprocal translocation between chromosomes 22 and 9 produces the Philadelphia chromosome, which is often found in patients with chronic myelogenous leukemia. The chromosome 22 breakpoint for this translocation is located within the BCR gene. The translocation produces a fusion protein which is encoded by sequence from both BCR and ABL, the gene at the chromosome 9 breakpoint. Although the BCR-ABL fusion protein has been extensively studied, the function of the normal BCR gene product is not clear. The protein has serine/threonine kinase activity and is a GTPase-activating protein for p21rac. Two transcript variants encoding different isoforms have been found for this gene. [provided by RefSeq]

**Other
Designations:** bcr-abl1 e14a3 chimeric protein

Interactome



Gene Pathway

[Chronic myeloid leukemia](#) [Pathways in cancer](#)

Related Disease

[Alzheimer Disease](#) [Alzheimer disease](#) [Angina Pectoris, Variant](#) [Bipolar Disorder](#)
[Brief Psychiatric Rating Scale](#) [Chromosome Breakage](#) [Coronary Vasospasm](#)
[Depressive Disorder, Major](#) [Genetic Predisposition to Disease](#) [Leukemia, chronic myeloid](#)
[Leukemia, Myelocytic, Acute](#) [Leukemia, Myelogenous, Chronic, BCR-ABL Positive](#)
[Leukemia, Myeloid, Chronic](#) [Lung Neoplasms](#) [Pulmonary Disease, Chronic Obstructive](#)
[Small Cell Lung Carcinoma](#) [Tobacco Use Disorder](#) [Urinary Bladder Neoplasms](#)
[Werner syndrome](#)

[服務條款](#) | [隱私權政策](#) | [著作及商標](#) | [網站地圖](#)

©2016 亞諾法生技股份有限公司 Abnova Corporation. 版權所有.