



SZABO SCANDIC

Part of Europa Biosite

Produktinformation



Forschungsprodukte & Biochemikalien



Zellkultur & Verbrauchsmaterial



Diagnostik & molekulare Diagnostik



Laborgeräte & Service

Weitere Information auf den folgenden Seiten!
See the following pages for more information!



Lieferung & Zahlungsart

siehe unsere [Liefer- und Versandbedingungen](#)

Zuschläge

- Mindermengenzuschlag
- Trockeneiszuschlag
- Gefahrgutzuschlag
- Expressversand

SZABO-SCANDIC HandelsgmbH

Quellenstraße 110, A-1100 Wien

T. +43(0)1 489 3961-0

F. +43(0)1 489 3961-7

mail@szabo-scandic.com

www.szabo-scandic.com

[linkedin.com/company/szaboscandic](https://www.linkedin.com/company/szaboscandic) 

BCR 293T Cell Transient Overexpression Lysate(Denatured)

Catalog # : H00000613-T01

規格 : [100 uL]

[List All](#)

Specification

Transfected Cell Line: 293T

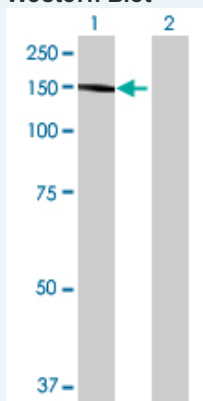
Plasmid: pCMV-BCR full-length

Host: Human

Theoretical MW (kDa): 118.47

Quality Control Testing: Transient overexpression cell lysate was tested with Anti-BCR antibody (H00000613-B01) by Western Blots.

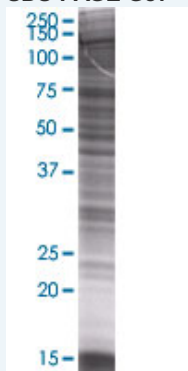
Western Blot



Lane 1: BCR transfected lysate (118.47 KDa)

Lane 2: Non-transfected lysate.

SDS-PAGE Gel



BCR transfected lysate.

Storage Buffer: 1X Sample Buffer (50 mM Tris-HCl, 2% SDS, 10% glycerol, 300 mM 2-mercaptoethanol, 0.01% Bromophenol blue)

Storage Instruction: Store at -80°C. Aliquot to avoid repeated freezing and thawing.

MSDS:  [Download](#)

Applications

Western Blot

Gene Information

Entrez GeneID: [613](#)

GeneBank [BC066122.1](#)
Accession#:

Protein [AAH66122.1](#)
Accession#:

Gene Name: BCR

Gene Alias: ALL,BCR-ABL1,BCR1,CML,D22S11,D22S662,FLJ16453,PHL

Gene Description: breakpoint cluster region

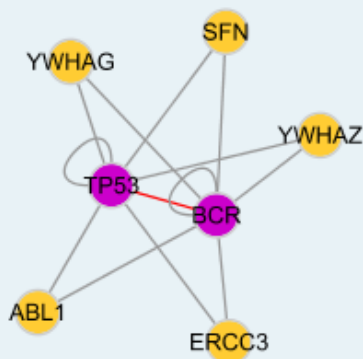
Omim ID: [151410](#), [608232](#)

Gene Ontology: [Hyperlink](#)

Gene Summary: A reciprocal translocation between chromosomes 22 and 9 produces the Philadelphia chromosome, which is often found in patients with chronic myelogenous leukemia. The chromosome 22 breakpoint for this translocation is located within the BCR gene. The translocation produces a fusion protein which is encoded by sequence from both BCR and ABL, the gene at the chromosome 9 breakpoint. Although the BCR-ABL fusion protein has been extensively studied, the function of the normal BCR gene product is not clear. The protein has serine/threonine kinase activity and is a GTPase-activating protein for p21rac. Two transcript variants encoding different isoforms have been found for this gene. [provided by RefSeq]

Other Designations: bcr-abl1 e14a3 chimeric protein

Interactome



Gene Pathway

[Chronic myeloid leukemia Pathways in cancer](#)

Related Disease

[Alzheimer Disease](#) [Alzheimer disease](#) [Angina Pectoris, Variant](#) [Bipolar Disorder](#)
[Brief Psychiatric Rating Scale](#) [Chromosome Breakage](#) [Coronary Vasospasm](#)
[Depressive Disorder, Major](#) [Genetic Predisposition to Disease](#) [Leukemia, chronic myeloid](#)
[Leukemia, Myelocytic, Acute](#) [Leukemia, Myelogenous, Chronic, BCR-ABL Positive](#)
[Leukemia, Myeloid, Chronic](#) [Lung Neoplasms](#) [Pulmonary Disease, Chronic Obstructive](#)
[Small Cell Lung Carcinoma](#) [Tobacco Use Disorder](#) [Urinary Bladder Neoplasms](#)
[Werner syndrome](#)

[服務條款](#) | [隱私權政策](#) | [著作及商標](#) | [網站地圖](#)

©2016 亞諾法生技股份有限公司 Abnova Corporation. 版權所有.