



SZABO SCANDIC

Part of Europa Biosite

Produktinformation



Forschungsprodukte & Biochemikalien



Zellkultur & Verbrauchsmaterial



Diagnostik & molekulare Diagnostik



Laborgeräte & Service

Weitere Information auf den folgenden Seiten!
See the following pages for more information!



Lieferung & Zahlungsart

siehe unsere [Liefer- und Versandbedingungen](#)

Zuschläge

- Mindermengenzuschlag
- Trockeneiszuschlag
- Gefahrgutzuschlag
- Expressversand

SZABO-SCANDIC HandelsgmbH

Quellenstraße 110, A-1100 Wien

T. +43(0)1 489 3961-0

F. +43(0)1 489 3961-7

mail@szabo-scandic.com

www.szabo-scandic.com

[linkedin.com/company/szaboscandic](https://www.linkedin.com/company/szaboscandic) 

BCS1L MaxPab mouse polyclonal antibody (B01) MaxPab®

Catalog # : H00000617-B01

規格 : [50 uL]

[List All](#)

Specification

Product Description: Mouse polyclonal antibody raised against a full-length human BCS1L protein.

Immunogen: BCS1L (NP_004319.1, 1 a.a. ~ 419 a.a) full-length human protein.

Sequence:
 MPLSDFILALKDNPYFGAGFGLVGVGTALALARKGVQLGLVAFRRHYMI
 TLEVPARDRSYAWLLSWLTRHSTRTRQHLVETSYLQHESGRISTKFEFV
 PSPGNHFIWYRGKWIRVERSREMQMIDLQTGTPWESVTFALGTDKRV
 FFNILEEARELALQQEEGKTVMYTAVGSEWRPFGYPRRRRPLNSVVLQ
 QGLADRIVRDVQEFIDNPKWYTDGIPYRRGYLLYGPPGCGKSSFITALA
 GELEHSICLLSLTSSLSDDRNLHLLSVAPQQSLVLEEDVDAAFLSRDLA
 VENPVKYQGLGRLTFSGLLNALDGVASTEARIVFMTNHHVDRLDPALIRP
 GRVDLKEYVGYCASHWQLTQMFQRFYPGQAPSLAENFAEHVLRATNQIS
 PAQVQGYFMLYKNDPVGAIHNAESLRR

Host: Mouse

Reactivity: Human

Quality Control Testing: Antibody reactive against mammalian transfected lysate.

Storage Buffer: No additive

Storage Instruction: Store at -20°C or lower. Aliquot to avoid repeated freezing and thawing.

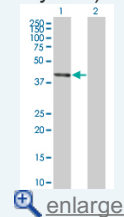
Note: For IHC and IF applications, antibody purification with Protein A will be needed prior to use.

MSDS: [Download](#)

Datasheet: [Download](#)

Application Image

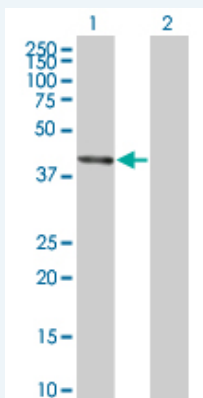
Western Blot (Transfected lysate)



[enlarge](#)

Applications

Western Blot (Transfected lysate)



Western Blot analysis of BCS1L expression in transfected 293T cell line (H00000617-T01) by BCS1L MaxPab polyclonal antibody.

Lane 1: BCS1L transfected lysate(46.09 KDa).
Lane 2: Non-transfected lysate.

 [Protocol Download](#)

Gene Information

Entrez GeneID: [617](#)

**GeneBank
Accession#:** [NM_004328.3](#)

**Protein
Accession#:** [NP_004319.1](#)

Gene Name: BCS1L

Gene Alias: BCS,BCS1,BJS,FLNMS,GRACILE,Hs.6719,PTD,h-BCS

**Gene
Description:** BCS1-like (yeast)

Omim ID: [124000](#), [256000](#), [262000](#), [603358](#), [603647](#)

Gene Ontology: [Hyperlink](#)

Gene Summary: This gene encodes a homolog of the *S. cerevisiae* bcs1 protein which is involved in the assembly of complex III of the mitochondrial respiratory chain. The encoded protein does not contain a mitochondrial targeting sequence but experimental studies confirm that it is imported into mitochondria. Mutations in this gene are associated with mitochondrial complex III deficiency and the GRACILE syndrome. Two alternatively spliced transcripts encoding the same protein have been described. [provided by RefSeq]

**Other
Designations:** BCS1-like,BCS1-like protein,OTTHUMP00000164147,mitochondrial chaperone BCS1,mitochondrial complex III assembly

[服務條款](#) | [隱私權政策](#) | [著作及商標](#) | [網站地圖](#)

©2016 亞諾法生技股份有限公司 Abnova Corporation. 版權所有.