



SZABO SCANDIC

Part of Europa Biosite

Produktinformation



Forschungsprodukte & Biochemikalien



Zellkultur & Verbrauchsmaterial



Diagnostik & molekulare Diagnostik



Laborgeräte & Service

Weitere Information auf den folgenden Seiten!
See the following pages for more information!



Lieferung & Zahlungsart

siehe unsere [Liefer- und Versandbedingungen](#)

Zuschläge

- Mindermengenzuschlag
- Trockeneiszuschlag
- Gefahrgutzuschlag
- Expressversand

SZABO-SCANDIC HandelsgmbH

Quellenstraße 110, A-1100 Wien

T. +43(0)1 489 3961-0

F. +43(0)1 489 3961-7

mail@szabo-scandic.com

www.szabo-scandic.com

[linkedin.com/company/szaboscandic](https://www.linkedin.com/company/szaboscandic) 

BCS1L purified MaxPab rabbit polyclonal antibody (D01P) MaxPab®

Catalog # : H00000617-D01P

規格 : [100 ug]

[List All](#)

Specification

Product Description: Rabbit polyclonal antibody raised against a full-length human BCS1L protein.

Immunogen: BCS1L (NP_004319.1, 1 a.a. ~ 419 a.a) full-length human protein.

Sequence:
 MPLSDFILALKDNPYFGAGFGLVGVGTALALARKGVQLGLVAFRRHYMI
 TLEVPARDRSYAWLLSWLTRHSTRTRQHLSVETSYLQHEGRISTKFEFV
 PSPGNHFIWYRGKWIRVERSREMQMIDLQTGTPWESVTFTALGTDKRV
 FFNILEEARELALQQEEGKTVMYTAVGSEWRPFGYPRRRRPLNSVVLQ
 QGLADRIVRDVQEFIDNPKWYTDGIPYRRGYLLYGPPGCGKSSFITALA
 GELEHSICLLSLTDSSLSDRLNHLLSVAPQQSLVLEEDVDAAFSLRDLA
 VENPVKYQGLGRLTFSGLLNALDGVASTEARIVFMTNHHVDRLDPALIRP
 GRVDLKEYVGYCWSHWLQTMFQRFYPGQAPSLAENFAEHVLRATNQIS
 PAQVQGYFMLYKNDPVGAIHNAESLRR

Host: Rabbit

Reactivity: Human, Mouse

Quality Control Testing: Antibody reactive against mammalian transfected lysate.

Storage Buffer: In 1x PBS, pH 7.4

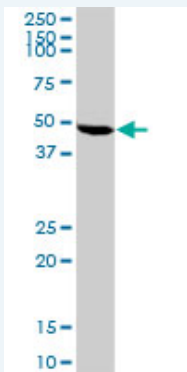
Storage Instruction: Store at -20°C or lower. Aliquot to avoid repeated freezing and thawing.

MSDS:  [Download](#)


Datasheet:  [Download](#)

Applications

Western Blot (Tissue lysate)



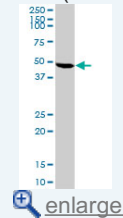
BCS1L MaxPab rabbit polyclonal antibody. Western Blot analysis of BCS1L expression in mouse spleen.

 [Protocol Download](#)

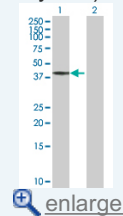
Western Blot (Transfected lysate)

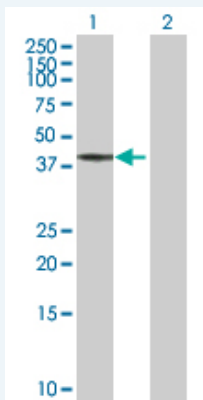
Application Image

Western Blot (Tissue lysate)



Western Blot (Transfected lysate)





Western Blot analysis of BCS1L expression in transfected 293T cell line ([H00000617-T01](#)) by BCS1L MaxPab polyclonal antibody.

Lane 1: BCS1L transfected lysate(47.50 KDa).
Lane 2: Non-transfected lysate.

 [Protocol Download](#)

Gene Information

Entrez GeneID: [617](#)

GeneBank Accession#: [NM_004328.3](#)

Protein Accession#: [NP_004319.1](#)

Gene Name: BCS1L

Gene Alias: BCS,BCS1,BJS,FLNMS,GRACILE,Hs.6719,PTD,h-BCS

Gene Description: BCS1-like (yeast)

Omim ID: [124000](#), [256000](#), [262000](#), [603358](#), [603647](#)

Gene Ontology: [Hyperlink](#)

Gene Summary: This gene encodes a homolog of the *S. cerevisiae* bcs1 protein which is involved in the assembly of complex III of the mitochondrial respiratory chain. The encoded protein does not contain a mitochondrial targeting sequence but experimental studies confirm that it is imported into mitochondria. Mutations in this gene are associated with mitochondrial complex III deficiency and the GRACILE syndrome. Two alternatively spliced transcripts encoding the same protein have been described. [provided by RefSeq]

Other Designations: BCS1-like,BCS1-like protein,OTTHUMP00000164147,mitochondrial chaperone BCS1,mitochondrial complex III assembly