



SZABO SCANDIC

Part of Europa Biosite

Produktinformation



Forschungsprodukte & Biochemikalien



Zellkultur & Verbrauchsmaterial



Diagnostik & molekulare Diagnostik



Laborgeräte & Service

Weitere Information auf den folgenden Seiten!
See the following pages for more information!



Lieferung & Zahlungsart

siehe unsere [Liefer- und Versandbedingungen](#)

Zuschläge

- Mindermengenzuschlag
- Trockeneiszuschlag
- Gefahrgutzuschlag
- Expressversand

SZABO-SCANDIC HandelsgmbH

Quellenstraße 110, A-1100 Wien

T. +43(0)1 489 3961-0

F. +43(0)1 489 3961-7

mail@szabo-scandic.com

www.szabo-scandic.com

[linkedin.com/company/szaboscandic](https://www.linkedin.com/company/szaboscandic) 

BCS1L 293T Cell Transient Overexpression Lysate(Denatured)

Catalog # : H00000617-T01

規格 : [100 uL]

[List All](#)

Specification

Transfected Cell Line: 293T

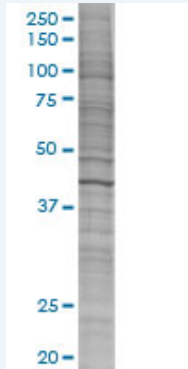
Plasmid: pCMV-BCS1L full-length

Host: Human

Theoretical MW (kDa): 46.2

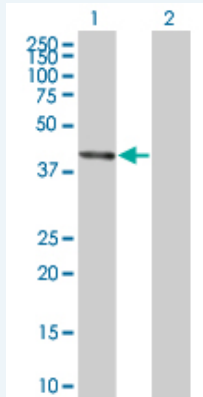
Quality Control Testing: Transient overexpression cell lysate was tested with Anti-BCS1L antibody ([H00000617-B01](#)) by Western Blots.

SDS-PAGE Gel



BCS1L transfected lysate.

Western Blot



Lane 1: BCS1L transfected lysate (46.2 KDa)

Lane 2: Non-transfected lysate.

Storage Buffer: 1X Sample Buffer (50 mM Tris-HCl, 2% SDS, 10% glycerol, 300 mM 2-mercaptoethanol, 0.01% Bromophenol blue)

Storage Instruction: Store at -80°C. Aliquot to avoid repeated freezing and thawing.

MSDS:  [Download](#)

Applications

Western Blot

Gene Information

Entrez GeneID: [617](#)

GeneBank Accession#: [NM_004328.3](#)

Protein Accession#: =

Gene Name: BCS1L

Gene Alias: BCS,BCS1,BJS,FLNMS,GRACILE,Hs.6719,PTD,h-BCS

Gene Description: BCS1-like (yeast)

Omim ID: [124000](#), [256000](#), [262000](#), [603358](#), [603647](#)

Gene Ontology: [Hyperlink](#)

Gene Summary: This gene encodes a homolog of the *S. cerevisiae* bcs1 protein which is involved in the assembly of complex III of the mitochondrial respiratory chain. The encoded protein does not contain a mitochondrial targeting sequence but experimental studies confirm that it is imported into mitochondria. Mutations in this gene are associated with mitochondrial complex III deficiency and the GRACILE syndrome. Two alternatively spliced transcripts encoding the same protein have been described. [provided by RefSeq]

Other Designations: BCS1-like,BCS1-like protein,OTTHUMP00000164147,mitochondrial chaperone BCS1,mitochondrial complex III assembly