



SZABO SCANDIC

Part of Europa Biosite

Produktinformation



Forschungsprodukte & Biochemikalien



Zellkultur & Verbrauchsmaterial



Diagnostik & molekulare Diagnostik



Laborgeräte & Service

Weitere Information auf den folgenden Seiten!
See the following pages for more information!



Lieferung & Zahlungsart

siehe unsere [Liefer- und Versandbedingungen](#)

Zuschläge

- Mindermengenzuschlag
- Trockeneiszuschlag
- Gefahrgutzuschlag
- Expressversand

SZABO-SCANDIC HandelsgmbH

Quellenstraße 110, A-1100 Wien

T. +43(0)1 489 3961-0

F. +43(0)1 489 3961-7

mail@szabo-scandic.com

www.szabo-scandic.com

[linkedin.com/company/szaboscandic](https://www.linkedin.com/company/szaboscandic) 

BDKRB1 MaxPab mouse polyclonal antibody (B02) MaxPab®

Catalog # : H00000623-B02

規格 : [50 uL]

[List All](#)

Specification

Product Description: Mouse polyclonal antibody raised against a full-length human BDKRB1 protein.

Immunogen: BDKRB1 (NP_000701, 1 a.a. ~ 353 a.a) full-length human protein.

Sequence:
 MASSWPPELEQSSNQSQLFPQNATACDCAPEAWDLLHRVLPFTFIISICFF
 GLLGNLFVLLVFLPRRQLNVAEIYLANLAASDLVFLGLPFWAENIWNQ
 FNWPFGALLCRVINGVIKANLFIIFLVVAISQDRYRVLVHPMASRRQQR
 RQARVTCVLIWVVGLLSIPTFLLRSIQAVPDLNITACILLPHEAWHFARI
 VELNILGFLPLAAIVFFNYHILASLRTRREEVSRTRCGGRKDSKTTALILT
 VVAFLVCWAPYHFFAFLEFLFQVQAVRGCFWEDFIDLGLQLANFFAFTN
 SSLNPVIYVFGRLFRRTKWELYKQCTPKSLAPISSSHREIFQLFWRN

Host: Mouse

Reactivity: Human

Quality Control Testing: Antibody reactive against mammalian transfected lysate.

Storage Buffer: No additive

Storage Instruction: Store at -20°C or lower. Aliquot to avoid repeated freezing and thawing.

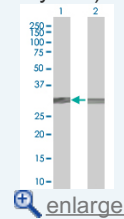
Note: For IHC and IF applications, antibody purification with Protein A will be needed prior to use.

MSDS:  [Download](#)

Datasheet:  [Download](#)

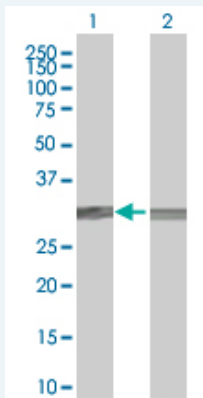
Application Image

Western Blot (Transfected lysate)



Applications

Western Blot (Transfected lysate)



Western Blot analysis of BDKRB1 expression in transfected 293T cell line (H00000623-T02) by BDKRB1 MaxPab polyclonal antibody.

Lane 1: BDKRB1 transfected lysate(38.83 KDa).

Lane 2: Non-transfected lysate.

Gene Information

Entrez GeneID: [623](#)

**GeneBank
Accession#:** [NM_000710](#)

**Protein
Accession#:** [NP_000701](#)

Gene Name: BDKRB1

Gene Alias: B1BKR,B1R,BKB1R,BKR1,BRADYB1

**Gene
Description:** bradykinin receptor B1

Omim ID: [600337](#)

Gene Ontology: [Hyperlink](#)

Gene Summary: Bradykinin, a 9 aa peptide, is generated in pathophysiologic conditions such as inflammation, trauma, burns, shock, and allergy. Two types of G-protein coupled receptors have been found which bind bradykinin and mediate responses to these pathophysiologic conditions. The protein encoded by this gene is one of these receptors and is synthesized de novo following tissue injury. Receptor binding leads to an increase in the cytosolic calcium ion concentration, ultimately resulting in chronic and acute inflammatory responses. [provided by RefSeq]

**Other
Designations:** BK-1 receptor,bradykinin B1 receptor,bradykinin receptor 1

Gene Pathway

[Calcium signaling pathway](#) [Complement and coagulation cascades](#)
[Neuroactive ligand-receptor interaction](#) [Regulation of actin cytoskeleton](#)

Related Disease

[Albuminuria](#) [Asthma](#) [Asthma](#) [Cardiovascular Diseases](#) [Coronary Artery Disease](#)
[Coronary Disease](#) [Diabetes Mellitus, Type 1](#) [Diabetes Mellitus, Type 2](#)
[Diabetic Nephropathies](#) [Disease Progression](#) [Edema](#) [Genetic Predisposition to Disease](#)
[Glomerulonephritis, IGA](#) [Hypertension](#) [Kidney Failure, Chronic](#) [Mental Disorders](#)
[Polycystic kidney disease](#) [Polycystic Kidney, Autosomal Dominant](#)