



# SZABO SCANDIC

Part of Europa Biosite

## Produktinformation



Forschungsprodukte & Biochemikalien



Zellkultur & Verbrauchsmaterial



Diagnostik & molekulare Diagnostik



Laborgeräte & Service

Weitere Information auf den folgenden Seiten!  
See the following pages for more information!



### Lieferung & Zahlungsart

siehe unsere [Liefer- und Versandbedingungen](#)

### Zuschläge

- Mindermengenzuschlag
- Trockeneiszuschlag
- Gefahrgutzuschlag
- Expressversand

### SZABO-SCANDIC HandelsgmbH

Quellenstraße 110, A-1100 Wien

T. +43(0)1 489 3961-0

F. +43(0)1 489 3961-7

[mail@szabo-scandic.com](mailto:mail@szabo-scandic.com)

[www.szabo-scandic.com](http://www.szabo-scandic.com)

[linkedin.com/company/szaboscandic](https://www.linkedin.com/company/szaboscandic) 

## BDKRB1 purified MaxPab rabbit polyclonal antibody (D01P) MaxPab®

Catalog # : H00000623-D01P

規格 : [ 100 ug ]

[List All](#)

### Specification

**Product Description:** Rabbit polyclonal antibody raised against a full-length human BDKRB1 protein.

**Immunogen:** BDKRB1 (AAH34705, 1 a.a. ~ 353 a.a) full-length human protein.

**Sequence:**  
 LASSWPPELEQSSNQSQLFPQNATACDNAPEAWDLLHRVLPFTFIISICFF  
 GLLGNLFVLLVFLPRRQLNVAEIYLANLAASDLVFLGLPFWAENIWNQ  
 FNWPFGALLCRVINGVIKANLFIISFLVVAISQDRYRVLVHPMASRRQRR  
 RQARVTCVLIWVVGGLLSIPTFLLRSIQAVPDLNITACILLPHEAWHFARI  
 VELNILGFLPLAAIVFFNYHILASLRTRREEVSRTRCGGRKDSKTTALILT  
 VVAFLVCWAPYHFFAFLEFLFQVQAVRGCFWEDFIDLGLQLANFFAFTN  
 SSLNPVIYVFGRLFRTKWELYKQCTPKSLAPISSHRKEIFQLFWRN

**Host:** Rabbit

**Reactivity:** Human

**Quality Control Testing:** Antibody reactive against mammalian transfected lysate.

**Storage Buffer:** In 1x PBS, pH 7.4

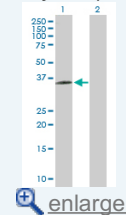
**Storage Instruction:** Store at -20°C or lower. Aliquot to avoid repeated freezing and thawing.

**MSDS:** [Download](#)

**Datasheet:** [Download](#)

### Application Image

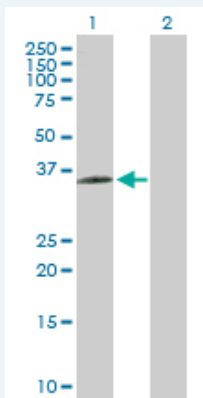
Western Blot (Transfected lysate)



[enlarge](#)

### Applications

#### Western Blot (Transfected lysate)



Western Blot analysis of BDKRB1 expression in transfected 293T cell line (H00000623-T03) by BDKRB1 MaxPab polyclonal antibody.

Lane 1: BDKRB1 transfected lysate(38.94 KDa).

Lane 2: Non-transfected lysate.

[Protocol Download](#)

## Gene Information

---

**Entrez GeneID:** [623](#)

---

**GeneBank  
Accession#:** [BC034705](#)

---

**Protein  
Accession#:** [AAH34705](#)

---

**Gene Name:** BDKRB1

---

**Gene Alias:** B1BKR,B1R,BKB1R,BKR1,BRADYB1

---

**Gene  
Description:** bradykinin receptor B1

---

**Omim ID:** [600337](#)

---

**Gene Ontology:** [Hyperlink](#)

---

**Gene Summary:** Bradykinin, a 9 aa peptide, is generated in pathophysiologic conditions such as inflammation, trauma, burns, shock, and allergy. Two types of G-protein coupled receptors have been found which bind bradykinin and mediate responses to these pathophysiologic conditions. The protein encoded by this gene is one of these receptors and is synthesized de novo following tissue injury. Receptor binding leads to an increase in the cytosolic calcium ion concentration, ultimately resulting in chronic and acute inflammatory responses. [provided by RefSeq]

---

**Other  
Designations:** BK-1 receptor,bradykinin B1 receptor,bradykinin receptor 1

---

## Gene Pathway

---

[Calcium signaling pathway](#) [Complement and coagulation cascades](#)  
[Neuroactive ligand-receptor interaction](#) [Regulation of actin cytoskeleton](#)

## Related Disease

---

[Albuminuria](#) [Asthma](#) [Asthma](#) [Cardiovascular Diseases](#) [Coronary Artery Disease](#)  
[Coronary Disease](#) [Diabetes Mellitus, Type 1](#) [Diabetes Mellitus, Type 2](#)  
[Diabetic Nephropathies](#) [Disease Progression](#) [Edema](#) [Genetic Predisposition to Disease](#)  
[Glomerulonephritis, IGA](#) [Hypertension](#) [Kidney Failure, Chronic](#) [Mental Disorders](#)  
[Polycystic kidney disease](#) [Polycystic Kidney, Autosomal Dominant](#)

---

[服務條款](#) | [隱私權政策](#) | [著作及商標](#) | [網站地圖](#)

©2016 亞諾法生技股份有限公司 Abnova Corporation. 版權所有.