



# SZABO SCANDIC

Part of Europa Biosite

## Produktinformation



Forschungsprodukte & Biochemikalien



Zellkultur & Verbrauchsmaterial



Diagnostik & molekulare Diagnostik



Laborgeräte & Service

Weitere Information auf den folgenden Seiten!  
See the following pages for more information!



### Lieferung & Zahlungsart

siehe unsere [Liefer- und Versandbedingungen](#)

### Zuschläge

- Mindermengenzuschlag
- Trockeneiszuschlag
- Gefahrgutzuschlag
- Expressversand

### SZABO-SCANDIC HandelsgmbH

Quellenstraße 110, A-1100 Wien

T. +43(0)1 489 3961-0

F. +43(0)1 489 3961-7

[mail@szabo-scandic.com](mailto:mail@szabo-scandic.com)

[www.szabo-scandic.com](http://www.szabo-scandic.com)

[linkedin.com/company/szaboscandic](https://www.linkedin.com/company/szaboscandic) 

## BDKRB1 293T Cell Transient Overexpression Lysate(Denatured)

Catalog # : H00000623-T03

規格 : [ 100 uL ]

[List All](#)

### Specification

**Transfected Cell Line:** 293T

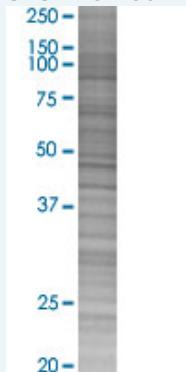
**Plasmid:** pCMV-BDKRB1 full-length

**Host:** Human

**Theoretical MW (kDa):** 38.94

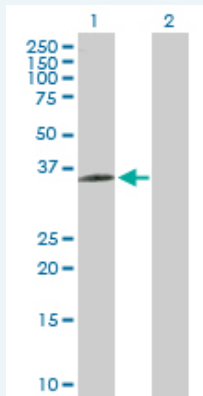
**Quality Control Testing:** Transient overexpression cell lysate was tested with Anti-BDKRB1 antibody ([H00000623-D01P](#)) by Western Blots.

#### SDS-PAGE Gel



BDKRB1 transfected lysate.

#### Western Blot



Lane 1: BDKRB1 transfected lysate ( 38.94 KDa)

Lane 2: Non-transfected lysate.

**Storage Buffer:** 1X Sample Buffer (50 mM Tris-HCl, 2% SDS, 10% glycerol, 300 mM 2-mercaptoethanol, 0.01% Bromophenol blue)

**Storage Instruction:** Store at -80°C. Aliquot to avoid repeated freezing and thawing.

**MSDS:**  [Download](#)

### Applications

## Western Blot

### Gene Information

Entrez GeneID: [623](#)

GeneBank [BC034705](#)  
Accession#:

Protein [AAH34705](#)  
Accession#:

Gene Name: BDKRB1

Gene Alias: B1BKR,B1R,BKB1R,BKR1,BRADYB1

Gene Description: bradykinin receptor B1

Omim ID: [600337](#)

Gene Ontology: [Hyperlink](#)

**Gene Summary:** Bradykinin, a 9 aa peptide, is generated in pathophysiologic conditions such as inflammation, trauma, burns, shock, and allergy. Two types of G-protein coupled receptors have been found which bind bradykinin and mediate responses to these pathophysiologic conditions. The protein encoded by this gene is one of these receptors and is synthesized de novo following tissue injury. Receptor binding leads to an increase in the cytosolic calcium ion concentration, ultimately resulting in chronic and acute inflammatory responses. [provided by RefSeq]

Other Designations: BK-1 receptor,bradykinin B1 receptor,bradykinin receptor 1

### Gene Pathway

[Calcium signaling pathway](#) [Complement and coagulation cascades](#)  
[Neuroactive ligand-receptor interaction](#) [Regulation of actin cytoskeleton](#)

### Related Disease

[Albuminuria](#) [Asthma](#) [Asthma](#) [Cardiovascular Diseases](#) [Coronary Artery Disease](#)  
[Coronary Disease](#) [Diabetes Mellitus, Type 1](#) [Diabetes Mellitus, Type 2](#)  
[Diabetic Nephropathies](#) [Disease Progression](#) [Edema](#) [Genetic Predisposition to Disease](#)  
[Glomerulonephritis, IGA](#) [Hypertension](#) [Kidney Failure, Chronic](#) [Mental Disorders](#)  
[Polycystic kidney disease](#) [Polycystic Kidney, Autosomal Dominant](#)