



# SZABO SCANDIC

Part of Europa Biosite

## Produktinformation



Forschungsprodukte & Biochemikalien



Zellkultur & Verbrauchsmaterial



Diagnostik & molekulare Diagnostik



Laborgeräte & Service

Weitere Information auf den folgenden Seiten!  
See the following pages for more information!



### Lieferung & Zahlungsart

siehe unsere [Liefer- und Versandbedingungen](#)

### Zuschläge

- Mindermengenzuschlag
- Trockeneiszuschlag
- Gefahrgutzuschlag
- Expressversand

### SZABO-SCANDIC HandelsgmbH

Quellenstraße 110, A-1100 Wien

T. +43(0)1 489 3961-0

F. +43(0)1 489 3961-7

[mail@szabo-scandic.com](mailto:mail@szabo-scandic.com)

[www.szabo-scandic.com](http://www.szabo-scandic.com)

[linkedin.com/company/szaboscandic](https://www.linkedin.com/company/szaboscandic) 

## BGLAP monoclonal antibody (M02), clone 2D5

Catalog # : H00000632-M02

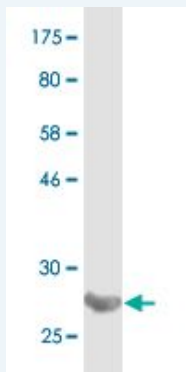
規格 : [ 100 ug ]

[List All](#)

### Specification

<b>Product Description:</b>	Mouse monoclonal antibody raised against a partial recombinant BGLAP.
<b>Immunogen:</b>	BGLAP (NP_954642, 52 a.a. ~ 100 a.a) partial recombinant protein with GST tag. MW of the GST tag alone is 26 KDa.
<b>Sequence:</b>	YLYQWLGAPVPYPDPLEPRREVCELNPDCDELADHIGFQEAYRRFYGPV
<b>Host:</b>	Mouse
<b>Reactivity:</b>	Human
<b>Isotype:</b>	IgG1 Lambda

**Quality Control Testing:** Antibody Reactive Against Recombinant Protein.



Western Blot detection against Immunogen (31.13 KDa) .

**Storage Buffer:** In 1x PBS, pH 7.4

**Storage Instruction:** Store at -20°C or lower. Aliquot to avoid repeated freezing and thawing.

**MSDS:** [Download](#)

**Datasheet:** [Download](#)

### Applications

**Western Blot (Recombinant protein)**

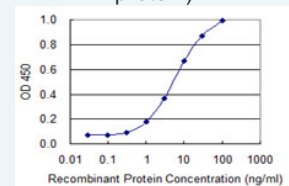
[Protocol Download](#)

**Sandwich ELISA (Recombinant protein)**

### Application Image

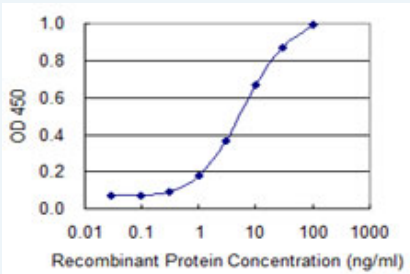
Western Blot (Recombinant protein)

Sandwich ELISA (Recombinant protein)




[enlarge](#)

ELISA



Detection limit for recombinant GST tagged BGLAP is 0.1 ng/ml as a capture antibody.

 [Protocol Download](#)

## ELISA

### Gene Information

Entrez GeneID: [632](#)

GeneBank [NM\\_199173](#)

Accession#:

Protein [NP\\_954642](#)

Accession#:

Gene Name: BGLAP

Gene Alias: BGP,OC,PMF1

Gene Description: bone gamma-carboxyglutamate (gla) protein

Omim ID: [112260](#)

Gene Ontology: [Hyperlink](#)

Other Designations: OTTHUMP00000016586, bone Gla protein, bone gamma-carboxyglutamate (gla) protein (osteocalcin), gamma-carboxyglutamic acid-containing protein, osteocalcin

### Related Disease

[Alzheimer Disease](#) [Alzheimer disease](#) [Body Weight](#) [Bone Diseases, Metabolic](#) [Cardiovascular Diseases](#) [Diabetes Complications](#) [Diabetes Mellitus, Type 2](#) [Fluorosis, Dental](#) [Fractures, Bone](#) [Genetic Predisposition to Disease](#) [Hypertension](#) [Insulin Resistance](#) [Metabolic Syndrome X](#) [Neoplasms](#) [Osteonecrosis](#) [Osteoporosis](#) [Osteoporosis, Postmenopausal](#) [Prostate cancer](#) [Prostatic Neoplasms](#)

... see more

[服務條款](#) | [隱私權政策](#) | [著作及商標](#) | [網站地圖](#)

©2016 亞諾法生技股份有限公司 Abnova Corporation. 版權所有.