



SZABO SCANDIC

Part of Europa Biosite

Produktinformation



Forschungsprodukte & Biochemikalien



Zellkultur & Verbrauchsmaterial



Diagnostik & molekulare Diagnostik



Laborgeräte & Service

Weitere Information auf den folgenden Seiten!
See the following pages for more information!



Lieferung & Zahlungsart

siehe unsere [Liefer- und Versandbedingungen](#)

Zuschläge

- Mindermengenzuschlag
- Trockeneiszuschlag
- Gefahrgutzuschlag
- Expressversand

SZABO-SCANDIC HandelsgmbH

Quellenstraße 110, A-1100 Wien

T. +43(0)1 489 3961-0

F. +43(0)1 489 3961-7

mail@szabo-scandic.com

www.szabo-scandic.com

[linkedin.com/company/szaboscandic](https://www.linkedin.com/company/szaboscandic) 

BICD1 polyclonal antibody (A01)

Catalog # : H00000636-A01

規格 : [50 uL]

[List All](#)

Specification

Product Description: Mouse polyclonal antibody raised against a partial recombinant BICD1.

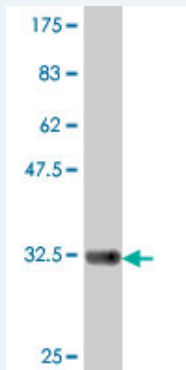
Immunogen: BICD1 (NP_001705, 1 a.a. ~ 70 a.a) partial recombinant protein with GST tag.

Sequence: MAAEEVLQTVVDHYKTEIERLTKELTETTHEKIQAAEYGLVWLEEKLTALKQ
QYDELEAEYDSLKQELEQLK

Host: Mouse

Reactivity: Human

Quality Control Testing: Antibody Reactive Against Recombinant Protein.



Western Blot detection against Immunogen (33.81 KDa) .

Storage Buffer: 50 % glycerol

Storage Instruction: Store at -20°C or lower. Aliquot to avoid repeated freezing and thawing.

MSDS: [Download](#)

Datasheet: [Download](#)

Applications

Western Blot (Recombinant protein)

[Protocol Download](#)

ELISA

Gene Information

Entrez GeneID: [636](#)

GeneBank Accession#: [NM_001714](#)

Application Image

Western Blot (Recombinant protein)

ELISA

Protein [NP_001705](#)

Accession#:

Gene Name: BICD1

Gene Alias: BICD

Gene bicaudal D homolog 1 (Drosophila)

Description:

Omim ID: [602204](#)

Gene Ontology: [Hyperlink](#)

Gene Summary: This gene is one of two human homologs of Drosophila bicaudal-D. It has been implicated in COPI-independent membrane transport from the Golgi apparatus to the endoplasmic reticulum. Two alternative splice variants have been described. Other alternative splice variants that encode different protein isoforms have been described but their full-length nature has not been determined. [provided by RefSeq]

Other bicaudal D homolog 1, cytoskeleton-like bicaudal D protein homolog 1

Designations:

Related Disease

[Genetic Predisposition to Disease](#) [Neoplasm Invasiveness](#) [Pancreatic Neoplasms](#)
[Prostatic Neoplasms](#) [Tobacco Use Disorder](#)

[服務條款](#) | [隱私權政策](#) | [著作及商標](#) | [網站地圖](#)

©2016 亞諾法生技股份有限公司 Abnova Corporation. 版權所有.