



SZABO SCANDIC

Part of Europa Biosite

Produktinformation



Forschungsprodukte & Biochemikalien



Zellkultur & Verbrauchsmaterial



Diagnostik & molekulare Diagnostik



Laborgeräte & Service

Weitere Information auf den folgenden Seiten!
See the following pages for more information!



Lieferung & Zahlungsart

siehe unsere [Liefer- und Versandbedingungen](#)

Zuschläge

- Mindermengenzuschlag
- Trockeneiszuschlag
- Gefahrgutzuschlag
- Expressversand

SZABO-SCANDIC HandelsgmbH

Quellenstraße 110, A-1100 Wien

T. +43(0)1 489 3961-0

F. +43(0)1 489 3961-7

mail@szabo-scandic.com

www.szabo-scandic.com

[linkedin.com/company/szaboscandic](https://www.linkedin.com/company/szaboscandic) 



PRDM1 MaxPab mouse polyclonal antibody (B01) MaxPab®

Catalog # : H00000639-B01

規格 : [50 uL]

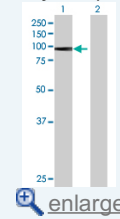
[List All](#)

Specification

| | |
|---------------------------------|---|
| Product Description: | Mouse polyclonal antibody raised against a full-length human PRDM1 protein. |
| Immunogen: | PRDM1 (NP_001189.1, 1 a.a. ~ 789 a.a) full-length human protein. |
| Sequence: | MKMDMEDADMTLWTEAEFEKCTYVNDHPWDSGADGGTSVQAEASL PRNLLFKYATNSEEIVGMSKEYIPKGTFRGGLIGEIYTNDTVPKNANRKY FWRIYSRGELHHFIDGFNEEKSNWMRYVNPASPREQNLAAACQNGMNIY FYTIKPIPANQELLWYCRDFAERLHYPYPGELTMMNLTQTQSSLKQPST EKNELCPKNVPKREYSVKEILKLDSPKSGKDLYRSNISPLTSEKLDLDFR RRGSPMPFYPRVVYPIRAPLPEDFLKASLAYGIERPTYITRSPISSTTPS PSARSSPDQSLKSSPHSSPGNTVSPVGPQSQHRDSYAYLNASYGTE GLGSYPGYAPLPHLPPAFIPSYNAHYPKFLLPPYGMNCNGLSAVSSMNGI NNFGLFPRLCVPYVSNLLGGGSLPHMPLNPTSLPSSLPDGGARRLLQPEH PREVLVPAPHSAFSFTGAAASMKDKACSPTSPTSAGTAATAEHVQPK ATSAAMAAPSSDEAMNLIKRNMTGYKTLPYPLKKQNGKIKYECNVCAK TFGQLSNLKVHLRVHSGERPFKCQTCNKGFTQLAHLQKHVHTGEKP HECQVCHKRFSSSTSNLKTHLRLHSGEKPYQCKVCPAKFTQFVHLKLHQR LHTRERPHKCSQCHKNYIHLCSLKVHLKGNCAAPAPGLPLEDLTRINEEI EKFDISDNADRLDVEDDISVISVVEKEILAVRKEKEETGLKVSLQRNMG NGLSSGCSLYESSDLPLMKLPPSNPLPLVPVKVQETVEPMDP |
| Host: | Mouse |
| Reactivity: | Human |
| Quality Control Testing: | Antibody reactive against mammalian transfected lysate. |
| Storage Buffer: | No additive |
| Storage Instruction: | Store at -20°C or lower. Aliquot to avoid repeated freezing and thawing. |
| Note: | For IHC and IF applications, antibody purification with Protein A will be needed prior to use. |
| MSDS: |  Download |
| Datasheet: |  Download |

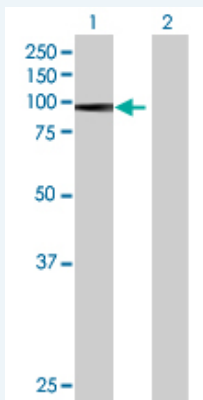
Application Image

Western Blot (Transfected lysate)



Applications

Western Blot (Transfected lysate)



Western Blot analysis of PRDM1 expression in transfected 293T cell line ([H00000639-T01](#)) by PRDM1 MaxPab polyclonal antibody.

Lane 1: PRDM1 transfected lysate(86.79 KDa).
Lane 2: Non-transfected lysate.

 [Protocol Download](#)

Gene Information

Entrez GeneID: [639](#)

GeneBank Accession#: [NM_001198.2](#)

Protein Accession#: [NP_001189.1](#)

Gene Name: PRDM1

Gene Alias: BLIMP1,MGC118922,MGC118923,MGC118924,MGC118925,PRDI-BF1

Gene Description: PR domain containing 1, with ZNF domain

Omim ID: [603423](#)

Gene Ontology: [Hyperlink](#)

Gene Summary: This gene encodes a protein that acts as a repressor of beta-interferon gene expression. The protein binds specifically to the PRDI (positive regulatory domain I element) of the beta-IFN gene promoter. Transcription of this gene increases upon virus induction. Two alternatively spliced transcript variants that encode different isoforms have been reported. [provided by RefSeq]

Other Designations: B-lymphocyte-induced maturation protein 1,OTTHUMP00000016918,PR-domain zinc finger protein 1,PRDI-binding factor-1,beta-interferon gene positive-regulatory domain I binding factor,positive regulatory domain I-binding factor 1

Related Disease

[Arthritis, Rheumatoid](#) [Crohn Disease](#) [Genetic Predisposition to Disease](#) [IgA Deficiency](#) [Inflammatory Bowel Diseases](#) [Kidney Failure, Chronic](#) [Lupus Erythematosus, Systemic](#) [Tobacco Use Disorder](#)