



SZABO SCANDIC

Part of Europa Biosite

Produktinformation



Forschungsprodukte & Biochemikalien



Zellkultur & Verbrauchsmaterial



Diagnostik & molekulare Diagnostik



Laborgeräte & Service

Weitere Information auf den folgenden Seiten!
See the following pages for more information!



Lieferung & Zahlungsart

siehe unsere [Liefer- und Versandbedingungen](#)

Zuschläge

- Mindermengenzuschlag
- Trockeneiszuschlag
- Gefahrgutzuschlag
- Expressversand

SZABO-SCANDIC HandelsgmbH

Quellenstraße 110, A-1100 Wien

T. +43(0)1 489 3961-0

F. +43(0)1 489 3961-7

mail@szabo-scandic.com

www.szabo-scandic.com

[linkedin.com/company/szaboscandic](https://www.linkedin.com/company/szaboscandic) 

PRDM1 monoclonal antibody (M01), clone 2B10

產品編號 # : H00000639-M01

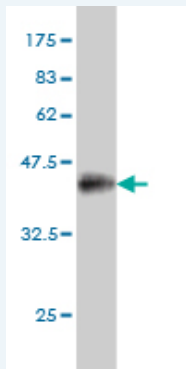
規格 : [100 ug]

List All

Specification

Product Description:	Mouse monoclonal antibody raised against a partial recombinant PRDM1.
Immunogen:	PRDM1 (NP_001189, 1 a.a. ~ 109 a.a) partial recombinant protein with GST tag. MW of the GST tag alone is 26 KDa.
Sequence:	MKMDMEDADMTLWTEAEFEKCTYVNDHPWDSGADGGTSVQAEASL PRNLLFKYATNSEEVIGVMSKEYIPKGTRFGPLIGEITYNDTVPKNANRKY FWRIYSRGELH
Host:	Mouse
Reactivity:	Human
Isotype:	IgG2a Kappa

Quality Control Testing: Antibody Reactive Against Recombinant Protein.



Western Blot detection against Immunogen (37.73 KDa) .

Storage Buffer: In 1x PBS, pH 7.4

Storage Instruction: Store at -20°C or lower. Aliquot to avoid repeated freezing and thawing.

MSDS: [Download](#)

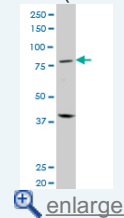
Datasheet: [Download](#)

Applications

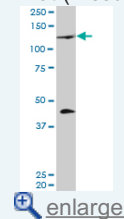
Western Blot (Tissue lysate)

Application Image

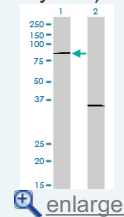
Western Blot (Tissue lysate)



Western Blot (Tissue lysate)

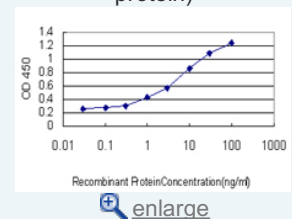


Western Blot (Transfected lysate)



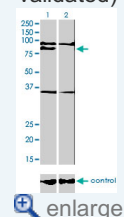
Western Blot (Recombinant protein)

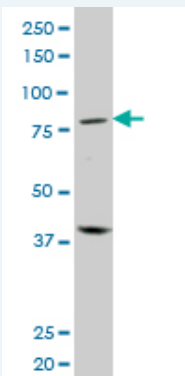
Sandwich ELISA (Recombinant protein)



ELISA

RNAi Knockdown (Antibody validated)

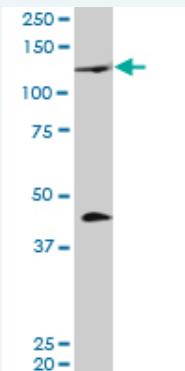




PRDM1 monoclonal antibody (M01), clone 2B10. Western Blot analysis of PRDM1 expression in human spleen.

 [Protocol Download](#)

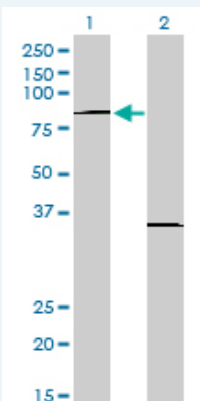
Western Blot (Tissue lysate)



PRDM1 monoclonal antibody (M01), clone 2B10. Western Blot analysis of PRDM1 expression in human tongue.

 [Protocol Download](#)

Western Blot (Transfected lysate)



Western Blot analysis of PRDM1 expression in transfected 293T cell line by PRDM1 monoclonal antibody (M01), clone 2B10.

Lane 1: PRDM1 transfected lysate(88 KDa).

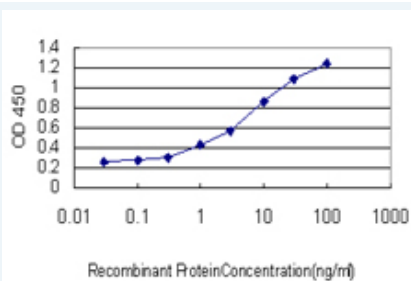
Lane 2: Non-transfected lysate.

 [Protocol Download](#)

Western Blot (Recombinant protein)

 [Protocol Download](#)

Sandwich ELISA (Recombinant protein)

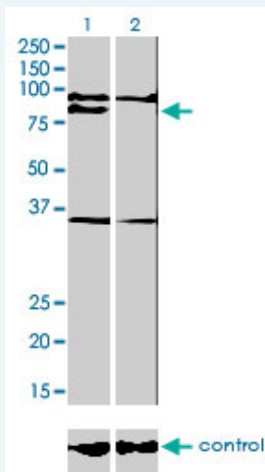


Detection limit for recombinant GST tagged PRDM1 is approximately 0.3ng/ml as a capture antibody.

[Protocol Download](#)

ELISA

RNAi Knockdown (Antibody validated)



Western blot analysis of PRDM1 over-expressed 293 cell line, cotransfected with PRDM1 Validated Chimera RNAi (Cat # H00000639-R01V) (Lane 2) or non-transfected control (Lane 1). Blot probed with PRDM1 monoclonal antibody (M01), clone 2B10 (Cat # H00000639-M01). GAPDH (36.1 kDa) used as specificity and loading control.

[Protocol Download](#)

Gene Information

Entrez GeneID: [639](#)

GeneBank [NM_001198](#)

Accession#:

Protein [NP_001189](#)

Accession#:

Gene Name: PRDM1

Gene Alias: BLIMP1,MGC118922,MGC118923,MGC118924,MGC118925,PRDI-BF1

Gene Description: PR domain containing 1, with ZNF domain

Description:

Omim ID: [603423](#)

Gene Ontology: [Hyperlink](#)

Gene Summary: This gene encodes a protein that acts as a repressor of beta-interferon gene expression. The protein binds specifically to the PRDI (positive regulatory domain I element) of the beta-IFN gene promoter. Transcription of this gene increases upon virus induction. Two alternatively spliced transcript variants that encode different isoforms have been reported. [provided by RefSeq]

Other B-lymphocyte-induced maturation protein
Designations: 1,OTTHUMP00000016918,PR-domain zinc finger protein 1,PRDI-binding factor-1,beta-interferon gene positive-regulatory domain I binding factor,positive regulatory domain I-binding factor 1

Related Disease

Arthritis, Rheumatoid Crohn Disease Genetic Predisposition to Disease IgA Deficiency
Inflammatory Bowel Diseases Kidney Failure, Chronic Lupus Erythematosus, Systemic
Tobacco Use Disorder

[服務條款](#) | [隱私權政策](#) | [著作及商標](#) | [網站地圖](#)

©2016 亞諾法生技股份有限公司 Abnova Corporation. 版權所有.