



# SZABO SCANDIC

Part of Europa Biosite

## Produktinformation



Forschungsprodukte & Biochemikalien



Zellkultur & Verbrauchsmaterial



Diagnostik & molekulare Diagnostik



Laborgeräte & Service

Weitere Information auf den folgenden Seiten!  
See the following pages for more information!



### Lieferung & Zahlungsart

siehe unsere [Liefer- und Versandbedingungen](#)

### Zuschläge

- Mindermengenzuschlag
- Trockeneiszuschlag
- Gefahrgutzuschlag
- Expressversand

### SZABO-SCANDIC HandelsgmbH

Quellenstraße 110, A-1100 Wien

T. +43(0)1 489 3961-0

F. +43(0)1 489 3961-7

[mail@szabo-scandic.com](mailto:mail@szabo-scandic.com)

[www.szabo-scandic.com](http://www.szabo-scandic.com)

[linkedin.com/company/szaboscandic](https://www.linkedin.com/company/szaboscandic) 

## PRDM1 monoclonal antibody (M02), clone 4A6

Catalog # : H00000639-M02

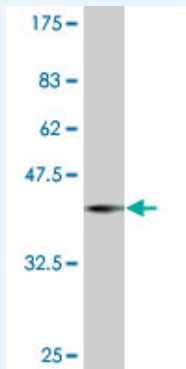
規格 : [ 100 ug ]

[List All](#)

### Specification

<b>Product Description:</b>	Mouse monoclonal antibody raised against a partial recombinant PRDM1.
<b>Immunogen:</b>	PRDM1 (NP_001189, 1 a.a. ~ 109 a.a) partial recombinant protein with GST tag. MW of the GST tag alone is 26 KDa.
<b>Sequence:</b>	MKMDMEDADMTLWTEAEFEKCTYVNDHPWDSGADGGT SVQAEASL PRNLLFKYATNSEEIVGMSKEYIPKGTRFGPLIGEIYNDTVPKNANRKY FWRIYSRGELH
<b>Host:</b>	Mouse
<b>Reactivity:</b>	Human
<b>Isotype:</b>	IgG1 Kappa

**Quality Control Testing:** Antibody Reactive Against Recombinant Protein.



Western Blot detection against Immunogen (37.73 KDa) .

**Storage Buffer:** In 1x PBS, pH 7.4

**Storage Instruction:** Store at -20°C or lower. Aliquot to avoid repeated freezing and thawing.

**MSDS:** [Download](#)

**Datasheet:** [Download](#)

### Applications

**Western Blot (Recombinant protein)**

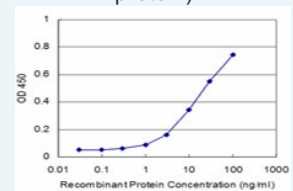
[Protocol Download](#)

**Sandwich ELISA (Recombinant protein)**

### Application Image

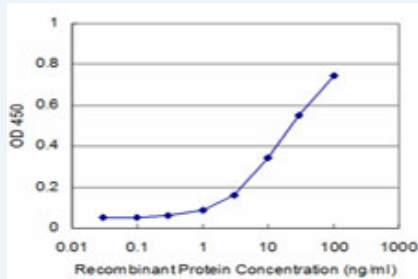
Western Blot (Recombinant protein)

Sandwich ELISA (Recombinant protein)




[enlarge](#)

ELISA



Detection limit for recombinant GST tagged PRDM1 is approximately 3ng/ml as a capture antibody.

 [Protocol Download](#)

## ELISA

### Gene Information

Entrez GeneID: [639](#)

GeneBank [NM\\_001198](#)

Accession#:

Protein [NP\\_001189](#)

Accession#:

Gene Name: PRDM1

Gene Alias: BLIMP1,MGC118922,MGC118923,MGC118924,MGC118925,PRDI-BF1

Gene Description: PR domain containing 1, with ZNF domain

Omim ID: [603423](#)

Gene Ontology: [Hyperlink](#)

**Gene Summary:** This gene encodes a protein that acts as a repressor of beta-interferon gene expression. The protein binds specifically to the PRDI (positive regulatory domain I element) of the beta-IFN gene promoter. Transcription of this gene increases upon virus induction. Two alternatively spliced transcript variants that encode different isoforms have been reported. [provided by RefSeq]

**Other Designations:** B-lymphocyte-induced maturation protein 1,OTTHUMP00000016918,PR-domain zinc finger protein 1,PRDI-binding factor-1,beta-interferon gene positive-regulatory domain I binding factor,positive regulatory domain I-binding factor 1

### Related Disease

[Arthritis](#), [Rheumatoid Crohn Disease](#), [Genetic Predisposition to Disease](#), [IgA Deficiency](#), [Inflammatory Bowel Diseases](#), [Kidney Failure](#), [Chronic Lupus Erythematosus](#), [Systemic Tobacco Use Disorder](#)