



SZABO SCANDIC

Part of Europa Biosite

Produktinformation



Forschungsprodukte & Biochemikalien



Zellkultur & Verbrauchsmaterial



Diagnostik & molekulare Diagnostik



Laborgeräte & Service

Weitere Information auf den folgenden Seiten!
See the following pages for more information!



Lieferung & Zahlungsart

siehe unsere [Liefer- und Versandbedingungen](#)

Zuschläge

- Mindermengenzuschlag
- Trockeneiszuschlag
- Gefahrgutzuschlag
- Expressversand

SZABO-SCANDIC HandelsgmbH

Quellenstraße 110, A-1100 Wien

T. +43(0)1 489 3961-0

F. +43(0)1 489 3961-7

mail@szabo-scandic.com

www.szabo-scandic.com

[linkedin.com/company/szaboscandic](https://www.linkedin.com/company/szaboscandic) 



PRDM1 monoclonal antibody (M03), clone 1G6

Catalog # : H00000639-M03

規格 : [100 ug]

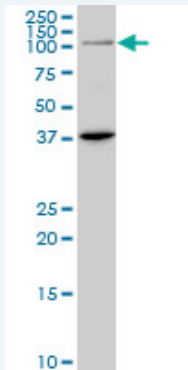
[List All](#)

Specification

Product Description:	Mouse monoclonal antibody raised against a partial recombinant PRDM1.
Immunogen:	PRDM1 (NP_001189, 1 a.a. ~ 109 a.a) partial recombinant protein with GST tag. MW of the GST tag alone is 26 KDa.
Sequence:	MKMDMEDADMTLWTEAEFEKCTYVNDHPWDSGADGGTSVQAEASL PRNLLFKYATNSEEVIGVMSKEYIPKGTRFGPLIGEITYNDTVPKNANRKY FWRIYSRGELH
Host:	Mouse
Reactivity:	Human
Isotype:	IgG2a Kappa
Quality Control Testing:	Antibody Reactive Against Recombinant Protein.
Storage Buffer:	In 1x PBS, pH 7.4
Storage Instruction:	Store at -20°C or lower. Aliquot to avoid repeated freezing and thawing.
MSDS:	 Download
Datasheet:	 Download

Applications

Western Blot (Tissue lysate)



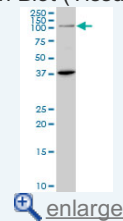
PRDM1 monoclonal antibody (M03), clone 1G6. Western Blot analysis of PRDM1 expression in human pancreas.

 [Protocol Download](#)

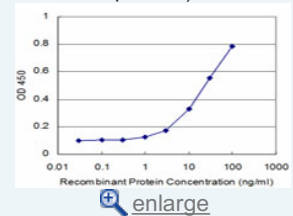
Sandwich ELISA (Recombinant protein)

Application Image

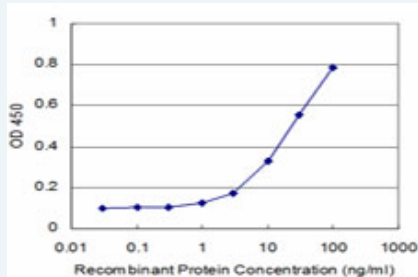
Western Blot (Tissue lysate)



Sandwich ELISA (Recombinant protein)



ELISA



Detection limit for recombinant GST tagged PRDM1 is approximately 1ng/ml as a capture antibody.

 [Protocol Download](#)

ELISA

Gene Information

Entrez GeneID: [639](#)

GeneBank [NM_001198](#)

Accession#:

Protein [NP_001189](#)

Accession#:

Gene Name: PRDM1

Gene Alias: BLIMP1,MGC118922,MGC118923,MGC118924,MGC118925,PRDI-BF1

Gene Description: PR domain containing 1, with ZNF domain

Omim ID: [603423](#)

Gene Ontology: [Hyperlink](#)

Gene Summary: This gene encodes a protein that acts as a repressor of beta-interferon gene expression. The protein binds specifically to the PRDI (positive regulatory domain I element) of the beta-IFN gene promoter. Transcription of this gene increases upon virus induction. Two alternatively spliced transcript variants that encode different isoforms have been reported. [provided by RefSeq]

Other Designations: B-lymphocyte-induced maturation protein 1,OTTHUMP00000016918,PR-domain zinc finger protein 1,PRDI-binding factor-1,beta-interferon gene positive-regulatory domain I binding factor,positive regulatory domain I-binding factor 1

Related Disease

[Arthritis](#), [Rheumatoid Crohn Disease](#), [Genetic Predisposition to Disease](#), [IgA Deficiency](#), [Inflammatory Bowel Diseases](#), [Kidney Failure](#), [Chronic Lupus Erythematosus](#), [Systemic Tobacco Use Disorder](#)