



SZABO SCANDIC

Part of Europa Biosite

Produktinformation



Forschungsprodukte & Biochemikalien



Zellkultur & Verbrauchsmaterial



Diagnostik & molekulare Diagnostik



Laborgeräte & Service

Weitere Information auf den folgenden Seiten!
See the following pages for more information!



Lieferung & Zahlungsart

siehe unsere [Liefer- und Versandbedingungen](#)

Zuschläge

- Mindermengenzuschlag
- Trockeneiszuschlag
- Gefahrgutzuschlag
- Expressversand

SZABO-SCANDIC HandelsgmbH

Quellenstraße 110, A-1100 Wien

T. +43(0)1 489 3961-0

F. +43(0)1 489 3961-7

mail@szabo-scandic.com

www.szabo-scandic.com

[linkedin.com/company/szaboscandic](https://www.linkedin.com/company/szaboscandic) 

PRDM1 monoclonal antibody (M04), clone 2F8

Catalog # : H00000639-M04

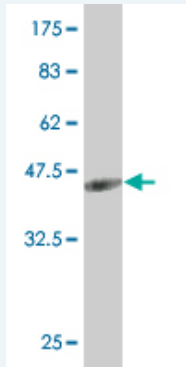
規格 : [100 ug]

[List All](#)

Specification

Product Description:	Mouse monoclonal antibody raised against a partial recombinant PRDM1.
Immunogen:	PRDM1 (NP_001189, 1 a.a. ~ 109 a.a) partial recombinant protein with GST tag. MW of the GST tag alone is 26 KDa.
Sequence:	MKMDMEDADMTLWTEAEFEKCTYVNDHPWDSGADGGTSVQAEASL PRNLLFKYATNSEEIVGMSKEYIPKGRFGPLIGEITYNDTVPKNANRKY FWRIYSRDELH
Host:	Mouse
Reactivity:	Human
Isotype:	IgG1 Kappa

Quality Control Testing: Antibody Reactive Against Recombinant Protein.



Western Blot detection against Immunogen (37.73 KDa) .

Storage Buffer: In 1x PBS, pH 7.4

Storage Instruction: Store at -20°C or lower. Aliquot to avoid repeated freezing and thawing.

MSDS: [Download](#)

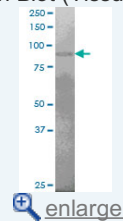
Datasheet: [Download](#)

Applications

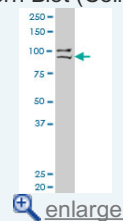
Western Blot (Tissue lysate)

Application Image

Western Blot (Tissue lysate)

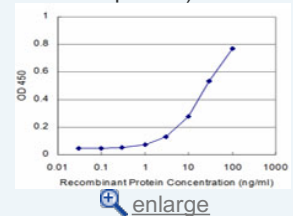


Western Blot (Cell lysate)

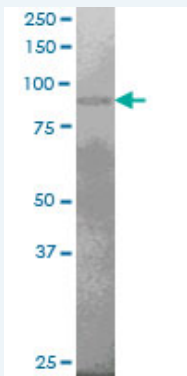


Western Blot (Recombinant protein)

Sandwich ELISA (Recombinant protein)



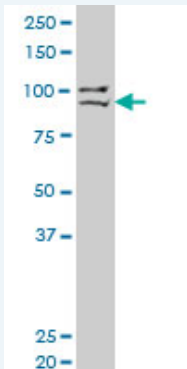
ELISA



PRDM1 monoclonal antibody (M04), clone 2F8. Western Blot analysis of PRDM1 expression in human skeletal muscle.

[Protocol Download](#)

Western Blot (Cell lysate)



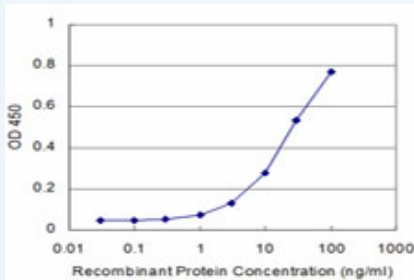
PRDM1 monoclonal antibody (M04), clone 2F8 Western Blot analysis of PRDM1 expression in SJCRH30 (Cat # L027V1).

[Protocol Download](#)

Western Blot (Recombinant protein)

[Protocol Download](#)

Sandwich ELISA (Recombinant protein)



Detection limit for recombinant GST tagged PRDM1 is approximately 3ng/ml as a capture antibody.

[Protocol Download](#)

ELISA

Gene Information

Entrez GeneID: [639](#)

GeneBank [NM_001198](#)
Accession#:

Protein [NP_001189](#)
Accession#:

Gene Name: PRDM1

Gene Alias: BLIMP1,MGC118922,MGC118923,MGC118924,MGC118925,PRDI-BF1

Gene PR domain containing 1, with ZNF domain

Description:

Omim ID: [603423](#)

Gene Ontology: [Hyperlink](#)

Gene Summary: This gene encodes a protein that acts as a repressor of beta-interferon gene expression. The protein binds specifically to the PRDI (positive regulatory domain I element) of the beta-IFN gene promoter. Transcription of this gene increases upon virus induction. Two alternatively spliced transcript variants that encode different isoforms have been reported. [provided by RefSeq]

Other Designations: B-lymphocyte-induced maturation protein 1, OTTHUMP00000016918, PR-domain zinc finger protein 1, PRDI-binding factor-1, beta-interferon gene positive-regulatory domain I binding factor, positive regulatory domain I-binding factor 1

Related Disease

[Arthritis, Rheumatoid](#) [Crohn Disease](#) [Genetic Predisposition to Disease](#) [IgA Deficiency](#) [Inflammatory Bowel Diseases](#) [Kidney Failure, Chronic](#) [Lupus Erythematosus, Systemic](#) [Tobacco Use Disorder](#)

[服務條款](#) | [隱私權政策](#) | [著作及商標](#) | [網站地圖](#)

©2016 亞諾法生技股份有限公司 Abnova Corporation. 版權所有.