



# SZABO SCANDIC

Part of Europa Biosite

## Produktinformation



Forschungsprodukte & Biochemikalien



Zellkultur & Verbrauchsmaterial



Diagnostik & molekulare Diagnostik



Laborgeräte & Service

Weitere Information auf den folgenden Seiten!  
See the following pages for more information!



### Lieferung & Zahlungsart

siehe unsere [Liefer- und Versandbedingungen](#)

### Zuschläge

- Mindermengenzuschlag
- Trockeneiszuschlag
- Gefahrgutzuschlag
- Expressversand

### SZABO-SCANDIC HandelsgmbH

Quellenstraße 110, A-1100 Wien

T. +43(0)1 489 3961-0

F. +43(0)1 489 3961-7

[mail@szabo-scandic.com](mailto:mail@szabo-scandic.com)

[www.szabo-scandic.com](http://www.szabo-scandic.com)

[linkedin.com/company/szaboscandic](https://www.linkedin.com/company/szaboscandic) 

## BLK monoclonal antibody (M02), clone 7A12

Catalog # : H00000640-M02

規格 : [ 100 ug ]

[List All](#)

### Specification

**Product Description:** Mouse monoclonal antibody raised against a partial recombinant BLK.

**Immunogen:** BLK (AAH07371, 1 a.a. ~ 90 a.a) partial recombinant protein with GST tag. MW of the GST tag alone is 26 KDa.

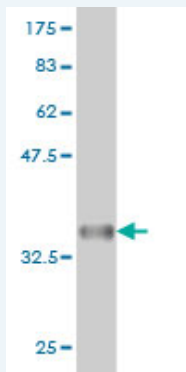
**Sequence:** MGLVSSKKPDKEKPIKEKDKGQWSPLKVSQAQDKDAPPLPPLVWFNHLTP  
PPPDEHLDEDKHFVVALYDYTAMNDRDLQMLKGEKLQVLKG

**Host:** Mouse

**Reactivity:** Human, Mouse, Rat

**Isotype:** IgG1 Kappa

**Quality Control Testing:** Antibody Reactive Against Recombinant Protein.



Western Blot detection against Immunogen (35.53 KDa) .

**Storage Buffer:** In 1x PBS, pH 7.4

**Storage Instruction:** Store at -20°C or lower. Aliquot to avoid repeated freezing and thawing.

**MSDS:** [Download](#)

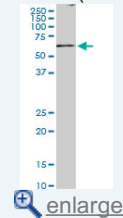
**Datasheet:** [Download](#)

### Publication Reference

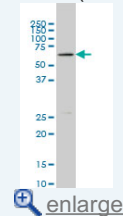
- [BANK1 and BLK Act through Phospholipase C Gamma 2 in B-Cell Signaling.](#)  
Bernal-Quiros M, Wu YY, Alarcon-Riquelme ME, Castillejo-Lopez CPLoS One. 2013;8(3):e59842. doi: 10.1371/journal.pone.0059842. Epub 2013 Mar 26.
- [Genetic and physical interaction of the B-cell systemic lupus erythematosus-associated genes BANK1 and BLK.](#)  
Castillejo-Lopez C, Delgado-Vega AM, Wojcik J, Kozyrev SV, Thavathiru E, Wu YY, Sanchez E, Pollmann D, Lopez-Egido JR, Fineschi S, Dominguez N, Lu R, James JA, Merrill JT, Kelly JA, Kaufman KM, Moser KL, Gilkeson G, Frostegard J, Pons-Estel BA, D'Alfonso S, Witte T, Callejas JL, Harley JB, Gaffney PM, Martin J, Guthridge JM, Alarcon-Riquelme ME. Ann Rheum Dis. 2011 Oct 6.

### Application Image

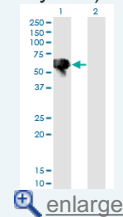
Western Blot (Cell lysate)



Western Blot (Cell lysate)

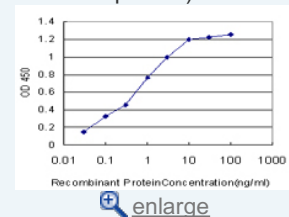


Western Blot (Transfected lysate)



Western Blot (Recombinant protein)

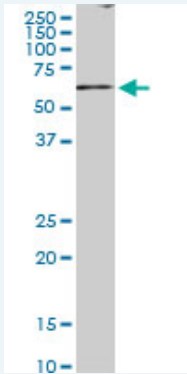
Sandwich ELISA (Recombinant protein)



ELISA

## Applications

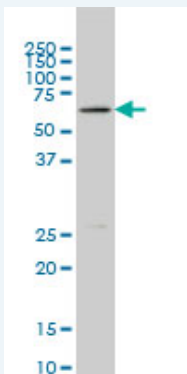
### Western Blot (Cell lysate)



BLK monoclonal antibody (M02), clone 7A12. Western Blot analysis of BLK expression in PC-12(Cat # L012V1 ).

 [Protocol Download](#)

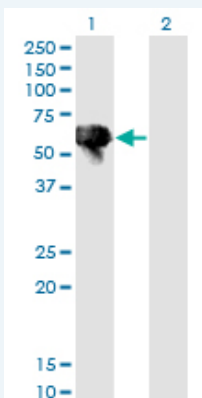
### Western Blot (Cell lysate)



BLK monoclonal antibody (M02), clone 7A12. Western Blot analysis of BLK expression in Raw 264.7.

 [Protocol Download](#)


### Western Blot (Transfected lysate)



Western Blot analysis of BLK expression in transfected 293T cell line by BLK monoclonal antibody (M02), clone 7A12.

Lane 1: BLK transfected lysate (Predicted MW: 57.7 KDa).

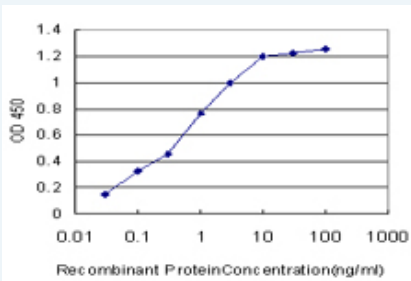
Lane 2: Non-transfected lysate.

 [Protocol Download](#)


### Western Blot (Recombinant protein)

 [Protocol Download](#)

### Sandwich ELISA (Recombinant protein)



Detection limit for recombinant GST tagged BLK is approximately 0.03ng/ml as a capture antibody.

 [Protocol Download](#)

## ELISA

### Gene Information

Entrez GeneID: [640](#)

GeneBank [BC007371](#)

Accession#:

Protein [AAH07371](#)

Accession#:

Gene Name: BLK

Gene Alias: MGC10442

Gene Description: B lymphoid tyrosine kinase

Omim ID: [191305](#)

Gene Ontology: [Hyperlink](#)

Other Designations: BLK nonreceptor tyrosine kinase

### Related Disease

[Antiphospholipid Syndrome](#) [Arthritis, Rheumatoid](#) [Genetic Predisposition to Disease](#)  
[Giant Cell Arteritis](#) [Lupus Erythematosus, Systemic](#) [Scleroderma, Systemic](#)