



SZABO SCANDIC

Part of Europa Biosite

Produktinformation



Forschungsprodukte & Biochemikalien



Zellkultur & Verbrauchsmaterial



Diagnostik & molekulare Diagnostik



Laborgeräte & Service

Weitere Information auf den folgenden Seiten!
See the following pages for more information!



Lieferung & Zahlungsart

siehe unsere [Liefer- und Versandbedingungen](#)

Zuschläge

- Mindermengenzuschlag
- Trockeneiszuschlag
- Gefahrgutzuschlag
- Expressversand

SZABO-SCANDIC HandelsgmbH

Quellenstraße 110, A-1100 Wien

T. +43(0)1 489 3961-0

F. +43(0)1 489 3961-7

mail@szabo-scandic.com

www.szabo-scandic.com

[linkedin.com/company/szaboscandic](https://www.linkedin.com/company/szaboscandic) 

BLM polyclonal antibody (A01)

Catalog # : H00000641-A01

規格 : [50 uL]

List All

Specification

Product Description: Mouse polyclonal antibody raised against a partial recombinant BLM.

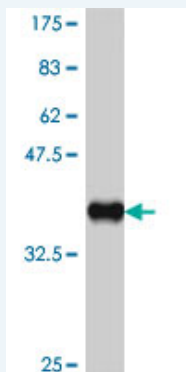
Immunogen: BLM (NP_000048, 1196 a.a. ~ 1295 a.a) partial recombinant protein with GST tag.

Sequence: SSVKKQKALVAKVSQREEMVKKCLGELTEVCKSLGKVFVGVHYFNIFNTV
TLKKLAESLSSDPEVLLQIDGVTEDKLEKYGAEVISVLQKYSEWTSPAED
S

Host: Mouse

Reactivity: Human

Quality Control Testing: Antibody Reactive Against Recombinant Protein.



Western Blot detection against Immunogen (37.11 kDa) .

Storage Buffer: 50 % glycerol

Storage Instruction: Store at -20°C or lower. Aliquot to avoid repeated freezing and thawing.

MSDS: [Download](#)

Datasheet: [Download](#)

Applications

Western Blot (Recombinant protein)

[Protocol Download](#)

ELISA

Gene Information

Entrez GeneID: [641](#)

GeneBank Accession#: [NM_000057](#)

Application Image

Western Blot (Recombinant protein)

ELISA

Protein Accession#: [NP_000048](#)

Gene Name: BLM

Gene Alias: BS,MGC126616,MGC131618,MGC131620,RECQ2,RECQL2,RECQL3

Gene Description: Bloom syndrome

Omim ID: [210900](#), [604610](#)

Gene Ontology: [Hyperlink](#)

Gene Summary: The Bloom syndrome gene product is related to the RecQ subset of DExH box-containing DNA helicases and has both DNA-stimulated ATPase and ATP-dependent DNA helicase activities. Mutations causing Bloom syndrome delete or alter helicase motifs and may disable the 3'-5' helicase activity. The normal protein may act to suppress inappropriate recombination. [provided by RefSeq]

Other Designations: Bloom syndrome protein

Gene Pathway

[Homologous recombination](#)

Related Disease

[Adenocarcinoma](#) [Bloom Syndrome](#) [Breast cancer](#) [Breast Neoplasms](#)
[Cardiovascular Diseases](#) [Colorectal Neoplasms](#) [Cystic fibrosis](#) [Diabetes Mellitus, Type 2](#)
[Edema](#) [Fanconi Anemia](#) [Gaucher disease](#) [Genetic Diseases, Inborn](#)
[Genetic Predisposition to Disease](#) [Hematologic Diseases](#) [Hodgkin Disease](#)
[Kidney Failure, Chronic](#) [Lung Neoplasms](#) [Lymphoma, Non-Hodgkin](#)
[Lymphoproliferative Disorders](#)

... see more