



SZABO SCANDIC

Part of Europa Biosite

Produktinformation



Forschungsprodukte & Biochemikalien



Zellkultur & Verbrauchsmaterial



Diagnostik & molekulare Diagnostik



Laborgeräte & Service

Weitere Information auf den folgenden Seiten!
See the following pages for more information!



Lieferung & Zahlungsart

siehe unsere [Liefer- und Versandbedingungen](#)

Zuschläge

- Mindermengenzuschlag
- Trockeneiszuschlag
- Gefahrgutzuschlag
- Expressversand

SZABO-SCANDIC HandelsgmbH

Quellenstraße 110, A-1100 Wien

T. +43(0)1 489 3961-0

F. +43(0)1 489 3961-7

mail@szabo-scandic.com

www.szabo-scandic.com

[linkedin.com/company/szaboscandic](https://www.linkedin.com/company/szaboscandic) 

BLMH 293T Cell Transient Overexpression Lysate(Denatured)

Catalog # : H00000642-T01

規格 : [100 uL]

List All

Specification

Transfected Cell Line: 293T

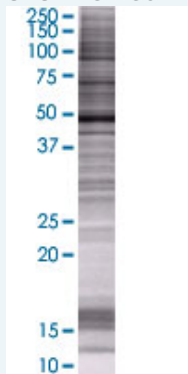
Plasmid: pCMV-BLMH full-length

Host: Human

Theoretical MW (kDa): 50.16

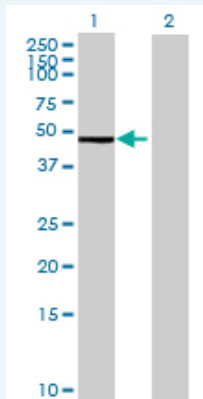
Quality Control Testing: Transient overexpression cell lysate was tested with Anti-BLMH antibody (H00000642-B01) by Western Blots.

SDS-PAGE Gel



BLMH transfected lysate.

Western Blot



Lane 1: BLMH transfected lysate (50.16 KDa)

Lane 2: Non-transfected lysate.

Storage Buffer: 1X Sample Buffer (50 mM Tris-HCl, 2% SDS, 10% glycerol, 300 mM 2-mercaptoethanol, 0.01% Bromophenol blue)

Storage Instruction: Store at -80°C. Aliquot to avoid repeated freezing and thawing.

MSDS:  [Download](#)

Applications

Application Image

Western Blot

Western Blot

Gene Information

Entrez GeneID: [642](#)

GeneBank Accession#: [NM_000386.2](#)

Protein Accession#: [NP_000377.1](#)

Gene Name: BLMH

Gene Alias: BH,BMH

Gene Description: bleomycin hydrolase

Omim ID: [104300](#), [602403](#)

Gene Ontology: [Hyperlink](#)

Gene Summary: Bleomycin hydrolase (BMH) is a cytoplasmic cysteine peptidase that is highly conserved through evolution; however, the only known activity of the enzyme is metabolic inactivation of the glycopeptide bleomycin (BLM), an essential component of combination chemotherapy regimens for cancer. The protein contains the signature active site residues of the cysteine protease papain superfamily. [provided by RefSeq]

Other Designations: -

Related Disease

[Alzheimer Disease](#) [Alzheimer disease](#) [Cardiovascular Diseases](#) [Chromosome Aberrations](#) [Diabetes Complications](#) [Genetic Predisposition to Disease](#) [Metabolic Syndrome X](#) [Micronuclei, Chromosome-Defective Neoplasms](#) [Neoplasms, Germ Cell and Embryonal](#) [Osteoporosis](#) [Pneumonia](#) [Pulmonary Fibrosis](#) [Testicular Neoplasms](#)

[服務條款](#) | [隱私權政策](#) | [著作及商標](#) | [網站地圖](#)

©2016 亞諾法生技股份有限公司 Abnova Corporation. 版權所有.