



# SZABO SCANDIC

Part of Europa Biosite

## Produktinformation



Forschungsprodukte & Biochemikalien



Zellkultur & Verbrauchsmaterial



Diagnostik & molekulare Diagnostik



Laborgeräte & Service

Weitere Information auf den folgenden Seiten!  
See the following pages for more information!



### Lieferung & Zahlungsart

siehe unsere [Liefer- und Versandbedingungen](#)

### Zuschläge

- Mindermengenzuschlag
- Trockeneiszuschlag
- Gefahrgutzuschlag
- Expressversand

### SZABO-SCANDIC HandelsgmbH

Quellenstraße 110, A-1100 Wien

T. +43(0)1 489 3961-0

F. +43(0)1 489 3961-7

[mail@szabo-scandic.com](mailto:mail@szabo-scandic.com)

[www.szabo-scandic.com](http://www.szabo-scandic.com)

[linkedin.com/company/szaboscandic](https://www.linkedin.com/company/szaboscandic) 

## CXCR5 monoclonal antibody (M01), clone 2C1

Catalog # : H00000643-M01

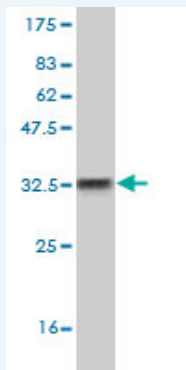
規格 : [ 100 ug ]

[List All](#)

### Specification

<b>Product Description:</b>	Mouse monoclonal antibody raised against a partial recombinant CXCR5.
<b>Immunogen:</b>	CXCR5 (NP_001707, 1 a.a. ~ 55 a.a) partial recombinant protein with GST tag. MW of the GST tag alone is 26 KDa.
<b>Sequence:</b>	MNYPLTLEMDLENLEDLFWELDRLDNYNDTSLVENHLCPEATGPLMASF KAVFVP
<b>Host:</b>	Mouse
<b>Reactivity:</b>	Human
<b>Isotype:</b>	IgG2a Kappa

**Quality Control Testing:** Antibody Reactive Against Recombinant Protein.



Western Blot detection against Immunogen (32.16 KDa) .

**Storage Buffer:** In 1x PBS, pH 7.4

**Storage Instruction:** Store at -20°C or lower. Aliquot to avoid repeated freezing and thawing.

**MSDS:** [Download](#)

**Datasheet:** [Download](#)

### Applications

**Western Blot (Recombinant protein)**

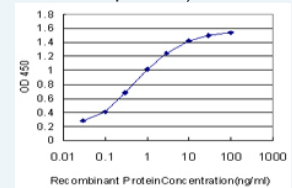
[Protocol Download](#)

**Sandwich ELISA (Recombinant protein)**

### Application Image

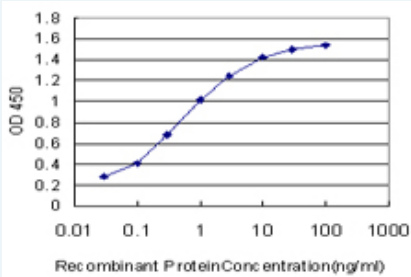
Western Blot (Recombinant protein)

Sandwich ELISA (Recombinant protein)



[enlarge](#)

ELISA



Detection limit for recombinant GST tagged BLR1 is approximately 0.03ng/ml as a capture antibody.

 [Protocol Download](#)

## ELISA

### Gene Information

Entrez GeneID: [643](#)

GeneBank [NM\\_001716](#)

Accession#:

Protein [NP\\_001707](#)

Accession#:

Gene Name: CXCR5

Gene Alias: BLR1,CD185,MDR15,MGC117347

Gene Description: chemokine (C-X-C motif) receptor 5

Omim ID: [601613](#)

Gene Ontology: [Hyperlink](#)

**Gene Summary:** This gene was identified as a gene specifically expressed in Burkitt's lymphoma and lymphatic tissues. The protein encoded by this gene is predicted to be a seven transmembrane G protein- coupled receptor and belongs to the CXC chemokine receptor family. BLC, a B-lymphocyte chemoattractant, was identified to be a specific ligand for this receptor. Studies of this gene and its mouse counterpart strongly suggest the essential function of this gene in B cell migration and localization within specific anatomic compartments, such as follicles in lymph nodes as well as in spleen. Two alternatively spliced variants of this gene exist. [provided by RefSeq]

**Other Designations:** Burkitt lymphoma receptor 1, Burkitt lymphoma receptor 1, GTP binding protein (chemokine (C-X-C motif) receptor 5), Burkitt lymphoma receptor 1, GTP-binding protein, C-X-C chemokine receptor type 5, monocyte-derived receptor 15

### Gene Pathway

[Chemokine signaling pathway](#) [Cytokine-cytokine receptor interaction](#)

### Related Disease

[Cardiovascular Diseases](#) [Diabetes Mellitus, Type 2](#) [Edema](#)  
[Genetic Predisposition to Disease](#)