



# SZABO SCANDIC

Part of Europa Biosite

## Produktinformation



Forschungsprodukte & Biochemikalien



Zellkultur & Verbrauchsmaterial



Diagnostik & molekulare Diagnostik



Laborgeräte & Service

Weitere Information auf den folgenden Seiten!  
See the following pages for more information!



### Lieferung & Zahlungsart

siehe unsere [Liefer- und Versandbedingungen](#)

### Zuschläge

- Mindermengenzuschlag
- Trockeneiszuschlag
- Gefahrgutzuschlag
- Expressversand

### SZABO-SCANDIC HandelsgmbH

Quellenstraße 110, A-1100 Wien

T. +43(0)1 489 3961-0

F. +43(0)1 489 3961-7

[mail@szabo-scandic.com](mailto:mail@szabo-scandic.com)

[www.szabo-scandic.com](http://www.szabo-scandic.com)

[linkedin.com/company/szaboscandic](https://www.linkedin.com/company/szaboscandic) 

# BLVRA MaxPab mouse polyclonal antibody (B01) MaxPab®

Catalog # : H00000644-B01

規格 : [ 50 uL ]

[List All](#)

## Specification

**Product Description:** Mouse polyclonal antibody raised against a full-length human BLVRA protein.

**Immunogen:** BLVRA (NP\_000703.2, 1 a.a. ~ 296 a.a) full-length human protein.

**Sequence:**  
 MNAEPERKFGVVVGVGRAGSVRMRDLRNPSSAFLNLIGFVSRREL  
 GSDGVQQISLEDALSSQEVEVAYICSESSSHEDYIRQFLNAGKHVLEYP  
 MTLSLAAQELWELAEQKGVLEEHVELLMEEFAFLKKEVVGKDLLKG  
 SLLFTAGPLEEERFGFPAFSGISRLTWLVSLFGELSLVSATLEERKEDQY  
 MKMTVCLETEKKSPLSWIEEKGPGLKRNRYLSFHFKSGSLENVNVGVN  
 KNIFLKDQNIQVQKLLGQFSEKELAAEKKRILHCLGLAEEIQKYCCSRK

**Host:** Mouse

**Reactivity:** Human

**Quality Control Testing:** Antibody reactive against mammalian transfected lysate.

**Storage Buffer:** No additive

**Storage Instruction:** Store at -20°C or lower. Aliquot to avoid repeated freezing and thawing.

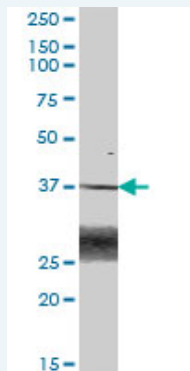
**Note:** For IHC and IF applications, antibody purification with Protein A will be needed prior to use.

**MSDS:** [Download](#)

**Datasheet:** [Download](#)

## Applications

### Western Blot (Tissue lysate)



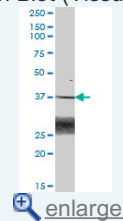
BLVRA MaxPab polyclonal antibody. Western Blot analysis of BLVRA expression in human liver.

[Protocol Download](#)

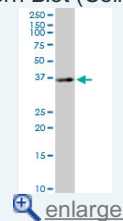
### Western Blot (Cell lysate)

## Application Image

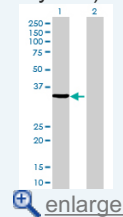
### Western Blot (Tissue lysate)



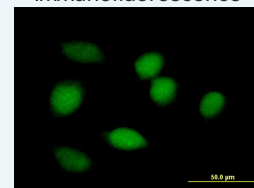
### Western Blot (Cell lysate)

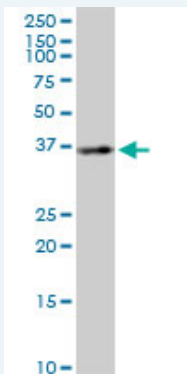


### Western Blot (Transfected lysate)



### Immunofluorescence

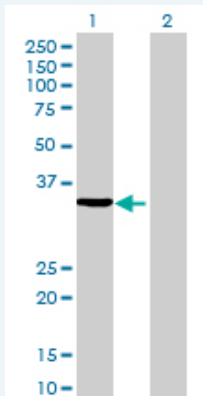




BLVRA MaxPab polyclonal antibody. Western Blot analysis of BLVRA expression in HeLa.

[Protocol Download](#)

#### Western Blot (Transfected lysate)



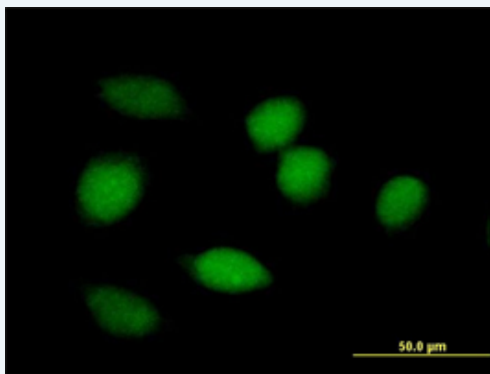
Western Blot analysis of BLVRA expression in transfected 293T cell line ([H00000644-T01](#)) by BLVRA MaxPab polyclonal antibody.

Lane 1: BLVRA transfected lysate(32.56 KDa).

Lane 2: Non-transfected lysate.

[Protocol Download](#)

#### Immunofluorescence



[enlarge this image](#)

Immunofluorescence of purified MaxPab antibody to BLVRA on HeLa cell. [antibody concentration 10 ug/ml]

[Protocol Download](#)

#### Gene Information

Entrez GeneID: [644](#)

GeneBank [NM\\_000712.3](#)

Accession#:

Protein [NP\\_000703.2](#)

Accession#:

Gene Name: BLVRA

**Gene Alias:** BLVR,BVR,BVRA

**Gene Description:** biliverdin reductase A

**Omim ID:** [109750](#)

**Gene Ontology:** [Hyperlink](#)

**Gene Summary:** Biliverdin reductases, such as BLVRA (EC 1.3.1.24), catalyze the conversion of biliverdin to bilirubin in the presence of NADPH or NADH (Komuro et al., 1996 [PubMed 8950184]).[supplied by OMIM]

**Other Designations:** -

#### Gene Pathway

[Porphyrin and chlorophyll metabolism](#)

#### Related Disease

[Coronary Artery Disease Genetic Predisposition to Disease](#)

[服務條款](#) | [隱私權政策](#) | [著作及商標](#) | [網站地圖](#)

©2016 亞諾法生技股份有限公司 Abnova Corporation. 版權所有.