



SZABO SCANDIC

Part of Europa Biosite

Produktinformation



Forschungsprodukte & Biochemikalien



Zellkultur & Verbrauchsmaterial



Diagnostik & molekulare Diagnostik



Laborgeräte & Service

Weitere Information auf den folgenden Seiten!
See the following pages for more information!



Lieferung & Zahlungsart

siehe unsere [Liefer- und Versandbedingungen](#)

Zuschläge

- Mindermengenzuschlag
- Trockeneiszuschlag
- Gefahrgutzuschlag
- Expressversand

SZABO-SCANDIC HandelsgmbH

Quellenstraße 110, A-1100 Wien

T. +43(0)1 489 3961-0

F. +43(0)1 489 3961-7

mail@szabo-scandic.com

www.szabo-scandic.com

[linkedin.com/company/szaboscandic](https://www.linkedin.com/company/szaboscandic) 

BLVRA purified MaxPab mouse polyclonal antibody (B01P) MaxPab®

Catalog # : H00000644-B01P

規格 : [50 ug]

[List All](#)

Specification

Product Description: Mouse polyclonal antibody raised against a full-length human BLVRA protein.

Immunogen: BLVRA (NP_000703.2, 1 a.a. ~ 296 a.a) full-length human protein.

Sequence:
 MNAEPERKFGVVVGVGRAGSVRMRDLRNPSSAFLNLIGFVSRREL
 GSDGVQQISLEDALSSQEVEVAYICSESSHEDYIRQFLNAGKHVLEYP
 MTLSLAAAQELWELAEQKQKVLHEEHVELLMEEFAFLKKEVVGKDLLKG
 SLLFTAGPLEEERFGFPAFSGISRLTWLVSLFGELSLVSATLEERKEDQY
 MKMTVCLETEKKSPLSWIEEKGPGLKRNRYLSFHFKSGSLENVNVGVN
 KNIFLKDQNIQVQKLLGQFSEKELAAEKKRILHCLGLAEEIQKYCCSRK

Host: Mouse

Reactivity: Human

Quality Control Testing: Antibody reactive against mammalian transfected lysate.

Storage Buffer: In 1x PBS, pH 7.4

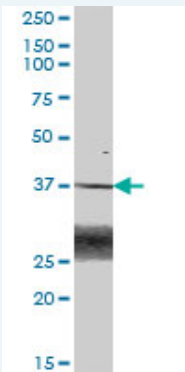
Storage Instruction: Store at -20°C or lower. Aliquot to avoid repeated freezing and thawing.

MSDS:  [Download](#)

Datasheet:  [Download](#)

Applications

Western Blot (Tissue lysate)



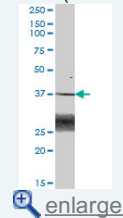
BLVRA MaxPab polyclonal antibody. Western Blot analysis of BLVRA expression in human liver.

 [Protocol Download](#)

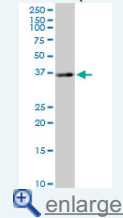
Western Blot (Cell lysate)

Application Image

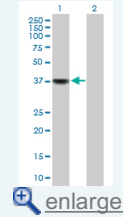
Western Blot (Tissue lysate)



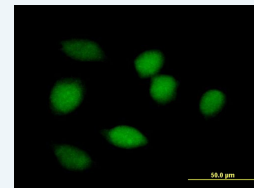
Western Blot (Cell lysate)

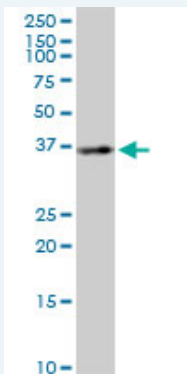


Western Blot (Transfected lysate)



Immunofluorescence

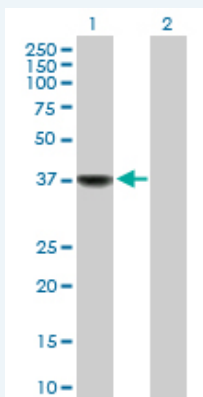




BLVRA MaxPab polyclonal antibody. Western Blot analysis of BLVRA expression in HeLa.

[Protocol Download](#)

Western Blot (Transfected lysate)



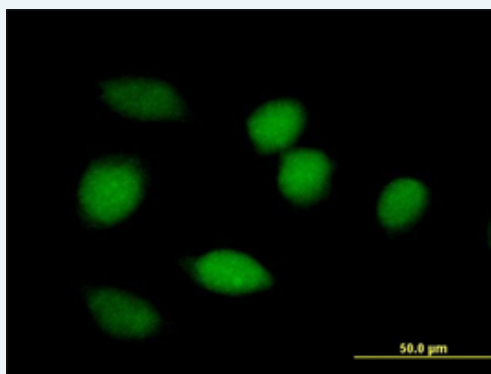
Western Blot analysis of BLVRA expression in transfected 293T cell line ([H00000644-T01](#)) by BLVRA MaxPab polyclonal antibody.

Lane 1: BLVRA transfected lysate(32.56 KDa).

Lane 2: Non-transfected lysate.

[Protocol Download](#)

Immunofluorescence



[enlarge this image](#)

Immunofluorescence of purified MaxPab antibody to BLVRA on HeLa cell. [antibody concentration 10 ug/ml]

[Protocol Download](#)

Gene Information

Entrez GeneID: [644](#)

GeneBank [NM_000712.3](#)

Accession#:

Protein [NP_000703.2](#)

Accession#:

Gene Name: BLVRA

Gene Alias: BLVR,BVR,BVRA

Gene biliverdin reductase A
Description:

Omim ID: [109750](#)

Gene Ontology: [Hyperlink](#)

Gene Summary: Biliverdin reductases, such as BLVRA (EC 1.3.1.24), catalyze the conversion of biliverdin to bilirubin in the presence of NADPH or NADH (Komuro et al., 1996 [PubMed 8950184]).[supplied by OMIM]

Other -
Designations:

Gene Pathway

[Porphyrin and chlorophyll metabolism](#)

Related Disease

[Coronary Artery Disease](#) [Genetic Predisposition to Disease](#)

[服務條款](#) | [隱私權政策](#) | [著作及商標](#) | [網站地圖](#)

©2016 亞諾法生技股份有限公司 Abnova Corporation. 版權所有.