



# SZABO SCANDIC

Part of Europa Biosite

## Produktinformation



Forschungsprodukte & Biochemikalien



Zellkultur & Verbrauchsmaterial



Diagnostik & molekulare Diagnostik



Laborgeräte & Service

Weitere Information auf den folgenden Seiten!  
See the following pages for more information!



### Lieferung & Zahlungsart

siehe unsere [Liefer- und Versandbedingungen](#)

### Zuschläge

- Mindermengenzuschlag
- Trockeneiszuschlag
- Gefahrgutzuschlag
- Expressversand

### SZABO-SCANDIC HandelsgmbH

Quellenstraße 110, A-1100 Wien

T. +43(0)1 489 3961-0

F. +43(0)1 489 3961-7

[mail@szabo-scandic.com](mailto:mail@szabo-scandic.com)

[www.szabo-scandic.com](http://www.szabo-scandic.com)

[linkedin.com/company/szaboscandic](https://www.linkedin.com/company/szaboscandic) 

## BLVRA (Human) IP-WB Antibody Pair

Catalog # : H00000644-PW1

規格 : [ 1 Set ]

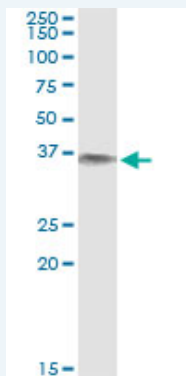
[List All](#)

### Specification

**Product Description:** This IP-WB antibody pair set comes with one antibody for immunoprecipitation and another to detect the precipitated protein in western blot.

**Reactivity:** Human

**Quality Control Testing:** Immunoprecipitation-Western Blot (IP-WB)



Immunoprecipitation of BLVRA transfected lysate using mouse monoclonal anti-BLVRA and Protein A Magnetic Bead ([U000Z](#)), and immunoblotted with rabbit polyclonal anti-BLVRA.

**Supplied Product:** Antibody pair set content:  
1. Antibody pair for IP: mouse monoclonal anti-BLVRA (300 ug)  
2. Antibody pair for WB: rabbit polyclonal anti-BLVRA (50 ul)

**Storage Instruction:** Store reagents of the antibody pair set at -20°C or lower. Please aliquot to avoid repeated freeze thaw cycle. Reagents should be returned to -20°C storage immediately after use.

**MSDS:**  [Download](#)

### Applications

**Immunoprecipitation-Western Blot**

 [Protocol Download](#)

### Gene Information

**Entrez GeneID:** [644](#)

**Gene Name:** BLVRA

**Gene Alias:** BLVR,BVR,BVRA

**Gene Description:** biliverdin reductase A

**Omim ID:** [109750](#)

**Gene Ontology:** [Hyperlink](#)

### Application Image

Immunoprecipitation-Western Blot

---

**Gene Summary:** Biliverdin reductases, such as BLVRA (EC 1.3.1.24), catalyze the conversion of biliverdin to bilirubin in the presence of NADPH or NADH (Komuro et al., 1996 [PubMed 8950184]).[supplied by OMIM]

---

**Other** -  
**Designations:**

---

**Gene Pathway**

---

Porphyrin and chlorophyll metabolism

**Related Disease**

---

Coronary Artery Disease Genetic Predisposition to Disease

---

[服務條款](#) | [隱私權政策](#) | [著作及商標](#) | [網站地圖](#)

©2016 亞諾法生技股份有限公司 Abnova Corporation. 版權所有.