



SZABO SCANDIC

Part of Europa Biosite

Produktinformation



Forschungsprodukte & Biochemikalien



Zellkultur & Verbrauchsmaterial



Diagnostik & molekulare Diagnostik



Laborgeräte & Service

Weitere Information auf den folgenden Seiten!
See the following pages for more information!



Lieferung & Zahlungsart

siehe unsere [Liefer- und Versandbedingungen](#)

Zuschläge

- Mindermengenzuschlag
- Trockeneiszuschlag
- Gefahrgutzuschlag
- Expressversand

SZABO-SCANDIC HandelsgmbH

Quellenstraße 110, A-1100 Wien

T. +43(0)1 489 3961-0

F. +43(0)1 489 3961-7

mail@szabo-scandic.com

www.szabo-scandic.com

[linkedin.com/company/szaboscandic](https://www.linkedin.com/company/szaboscandic) 

BMP1 polyclonal antibody (A01)

Catalog # : H00000649-A01

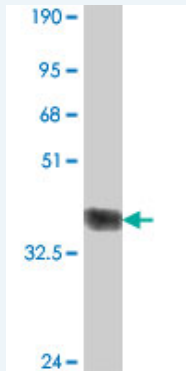
規格 : [50 uL]

[List All](#)

Specification

Product Description:	Mouse polyclonal antibody raised against a partial recombinant BMP1.
Immunogen:	BMP1 (NP_006120, 747 a.a. ~ 845 a.a) partial recombinant protein with GST tag.
Sequence:	CDHKVTSTSGTITSPNWPKYPSKKECTWAISSTPGHRVKLTFMEMDIES QPECAYDHLEVFDGRDAKAPVLGRFCGSKKPEPVLATGSRMFLRFYSD N
Host:	Mouse
Reactivity:	Human

Quality Control Testing: Antibody Reactive Against Recombinant Protein.



Western Blot detection against Immunogen (37 KDa) .

Storage Buffer: 50 % glycerol

Storage Instruction: Store at -20°C or lower. Aliquot to avoid repeated freezing and thawing.

MSDS: [Download](#)

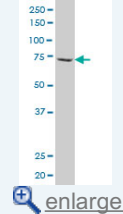
Datasheet: [Download](#)

Applications

Western Blot (Cell lysate)

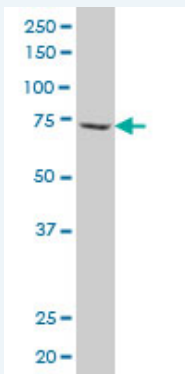
Application Image

Western Blot (Cell lysate)



Western Blot (Recombinant protein)

ELISA



BMP1 polyclonal antibody (A01), Lot # 051012JC01 Western Blot analysis of BMP1 expression in HL-60 (Cat # L014V1).

 [Protocol Download](#)

Western Blot (Recombinant protein)

 [Protocol Download](#)

ELISA

Gene Information

Entrez GeneID: [649](#)

GeneBank [NM_006129](#)

Accession#:

Protein [NP_006120](#)

Accession#:

Gene Name: BMP1

Gene Alias: FLJ44432,PCOLC,PCP,TLD,pCP-2

Gene bone morphogenetic protein 1

Description:

Omim ID: [112264](#)

Gene Ontology: [Hyperlink](#)

Gene Summary: This gene encodes a protein that is capable of inducing formation of cartilage in vivo. Although other bone morphogenetic proteins are members of the TGF-beta superfamily, this gene encodes a protein that is not closely related to other known growth factors. This gene is expressed as alternatively spliced variants that share an N-terminal protease domain but differ in their C-terminal region. [provided by RefSeq]

Other procollagen C-endopeptidase,procollagen C-proteinase

Designations:

Related Disease

[Alzheimer Disease](#) [Alzheimer disease](#) [Cardiovascular Diseases](#) [Colorectal Neoplasms](#)
[Diabetes Complications](#) [Genetic Predisposition to Disease](#) [Kidney Failure, Chronic](#)
[Metabolic Syndrome X](#) [Microsatellite Instability](#) [Neoplasms](#) [Osteoporosis](#)
[Ovarian Neoplasms](#) [Stomach Neoplasms](#)